

The fabrics used are from the Antique Rose Collection for Lecien Fabrics, <http://www.lecien.co.jp/en/hobby/>

Materials for a 75.5" x 87.5" Quilt



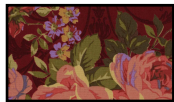
31765-20

1 1/4 yards



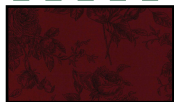
31766-20

1 1/4 yards



31765-30

1 1/2 yards



31769-30

1 yard
plus 5/8 yard for binding



31766-10

5/8 yards



(pearl white 402)

3 1/4 yards background

Choose your
favorite
Antique Rose
print!

5 1/2 yards for backing

To make the navy blue version of this quilt,
substitute prints 31765-30 and 31769-30
with 31765-70 and 31766-70, respectively.



31765-70



31766-70

LECIEN

Quilting in the Rain

by Jera Brandvig



Antique Rose

Antique Rose Quilt ©2018
By Jera Brandvig for Lecien Fabrics
www.QuiltingintheRain.com

LECIEN

<http://www.lecien.co.jp/en/hobby/>

Antique Rose

Pattern designed by Jera Brandvig of Quilting in the Rain © 2018

Sew with right sides facing together using a $\frac{1}{4}$ " seam allowance . WOF = width of fabric (along the 44" length)

Cutting Instructions

1. From your pink prints (two 1 $\frac{1}{4}$ yard cuts), cut the following:

- Bigger scale pink print (31765-20) - cut sixty (60) - 4.5" x 4.5" squares. To do this, cut a total of eight (8) - 4.5" strips x WOF. Sub-cut 4.5" x 4.5" squares from the strips for a total of sixty (60) squares.

- Smaller scale pink print (31766-20) - cut one hundred and twenty (120) - 2.5" x 5" rectangles. To do this, cut a total of sixteen (16) - 2.5" strips x WOF. Sub-cut 2.5" x 4.5" rectangles from the strips for a total of 120.

2. From your one yard of red (31769-30), cut one hundred and eighty (180) 2.5" x 2.5" squares. To do this, cut twelve (12) - 2.5" strips x WOF. Sub-cut 2.5" x 2.5" squares from the strips for a total of 180.

(Note: if making the navy blue version, substitute navy blue print 31766-70 instead of red)

3. From your 3 $\frac{1}{4}$ yards of white background fabric, cut the following:

- Sixty (60) - 4.5" x 4.5" squares. To do this, cut a total of eight (8) - 4.5" strips x WOF. Sub-cut 4.5" x 4.5" squares from the strips for a total of sixty (60) squares.

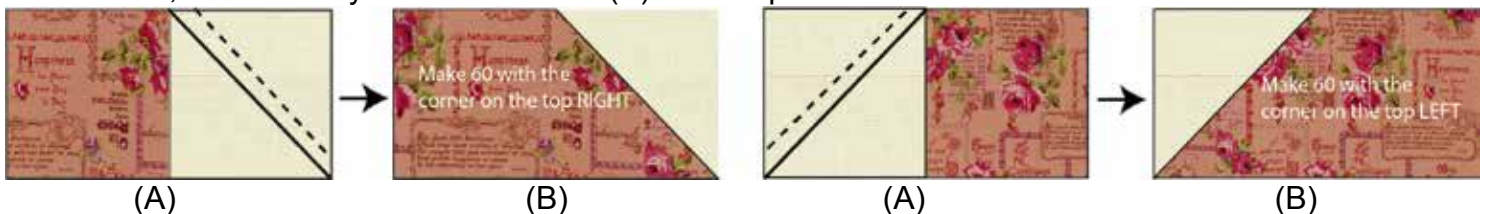
- One hundred and twenty (120) - 2.5" x 4.5" rectangles. To do this, cut a total of sixteen (16) - 2.5" strips x WOF. Sub-cut 2.5" x 4.5" rectangles from the strips for a total of 120.

- One hundred and eighty (180) 2.5" x 2.5" squares. To do this, cut twelve (12) - 2.5" strips x WOF. Sub-cut 2.5" x 2.5" squares from the strips for a total of 180.

Block Assembly Instructions

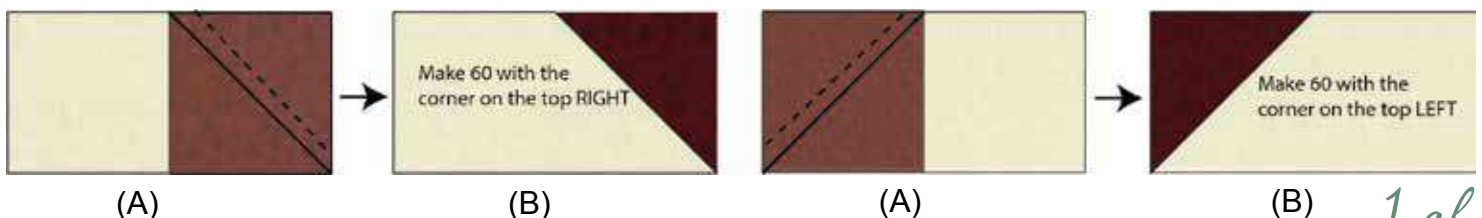
1. Take one pink 2.5" x 4.5" rectangle and one white 2.5" x 2.5" square. Follow diagrams below.

(A) With right sides facing together, align a square on one side of the rectangle. Mark a diagonal line from corner to corner as shown by the solid line. Sew along the solid line, and then trim off the corner $\frac{1}{4}$ " from the sew line, as shown by the dashed line. (B) Press open.

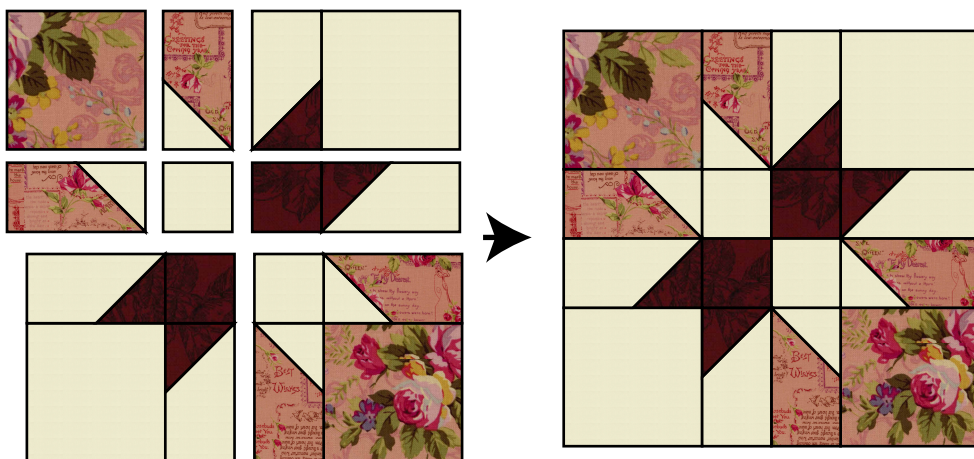


Make 60 with the corner on the top RIGHT, and another 60 with the corner on the top LEFT for a total of 120. Chain piece for a quicker finish.

2. Repeat step 1 above, but instead use one white 2.5" x 4.5" rectangle and one red 2.5" x 2.5" square.



3. Assemble a block as shown below using the corner rectangle pieces you made from steps 1 and 2, as well as the pink and white 4.5" x 4.5" squares and red and white 2.5" x 2.5" squares.



The block will measure 12.5" x 12.5" unfinished. Make a total of 30 blocks.

Quilt Assembly Instructions

Please refer to the image on page 3.

1. Arrange all 30 star blocks with 5 blocks per row x 6 rows. Start by assembling all the pieces within each row first. Then, assemble the rows together. Be sure to place pins at the seam intersections before sewing to help everything line up. This is the main quilt top. Next you will add borders.

Tip: When ironing the blocks in each row, alternate the direction you press the seams in each row so that the seams will later nest at the intersections when the rows are sewn together. This will help everything line up.

2. After the star blocks have been sewn together to make the main quilt top, you can add the inner border. Take the 5/8 yard from print 31766-10 and cut eight (8) 2.5" strips x WOF. Sew two strips together to make one long strip. Do that for all 8 strips.

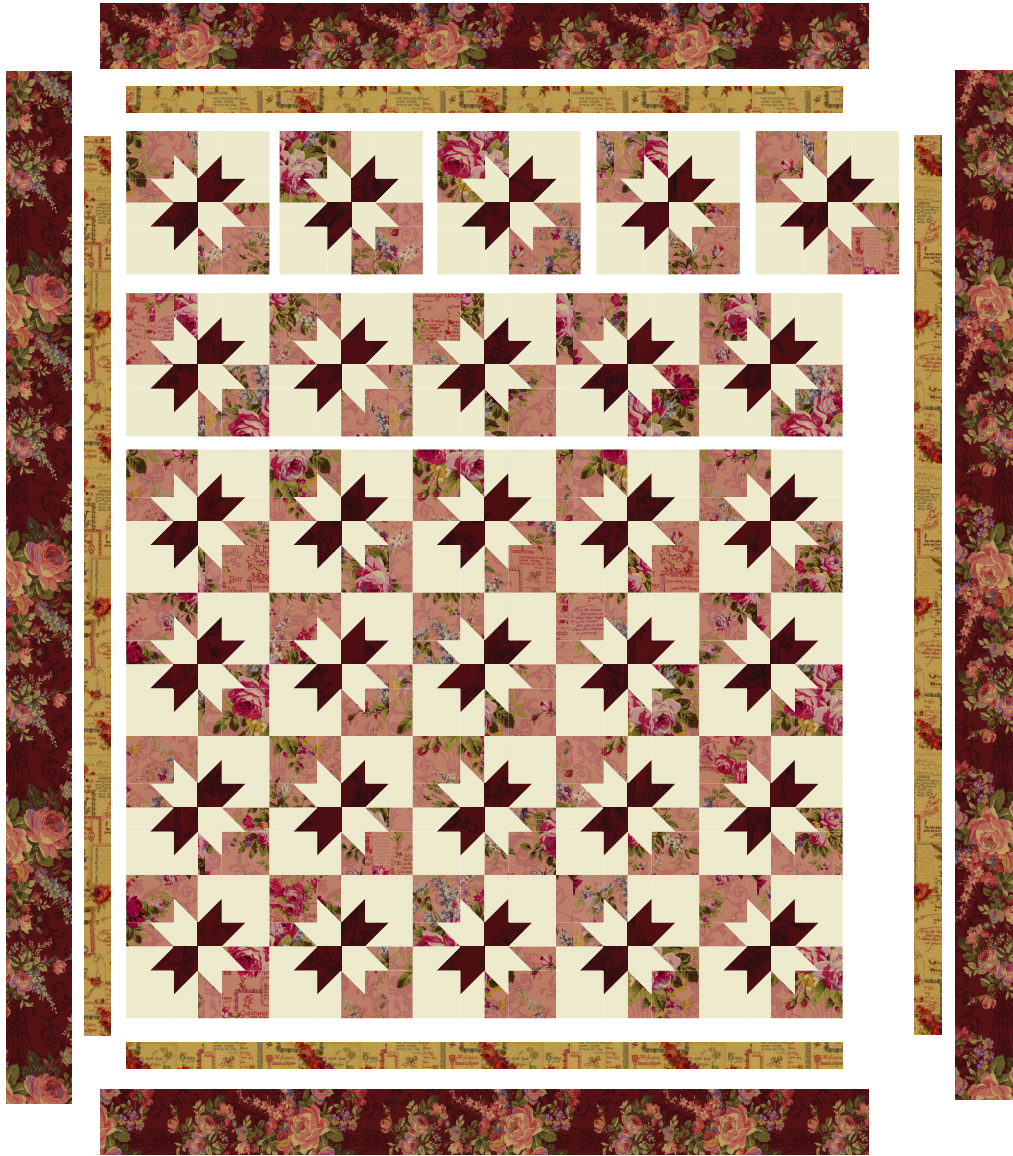
Start by sewing the inner border strips to the top and bottom of the main quilt top. Trim so it's the same width as the main quilt top. Press open. Repeat, but for the left and right sides.

3. Lastly, add the outter borders. Take the 1 1/2 yards of print 31765-30 and cut nine (9) 6" strips x WOF. Sew two strips together to make one long strip. Sew to the top of the quilt. Trim so it's the same width as the quilt top. Press open. Repeat, but for the bottom.

To add the left and right outter borders, sew 5 strips together to make one long piece that measures approximately 200" long x 6" wide. Cut this in half to yield two 100" long x 6" wide strips. Sew to the left and right sides of the quilt top and trim as needed so that it's flush with the quilt top. Press open.

(Note: if making the navy blue version, substitute navy blue print 31765-70 instead of red)

See page 2 for Quilt Assembly Instructions.



Finish it!

Cut the 5 1/2 yards of backing fabric in half across the WOF to yield two rectangles ~ 99" x WOF. Trim the selvages and then sew together along the ~99" length.

Baste the quilt, and then quilt however you please.

From your binding fabric, cut nine 2.5" strips along the WOF. Attach the strips together and bind the quilt. An easy-to-follow binding tutorial can be found on my blog, www.QuiltingintheRain.com, under "Tutorials."

Lastly, don't forget to share your lovely quilt with Lecien Fabrics and me on Instagram or Facebook: @Lecien_Fabrics and @QuiltingintheRain.

Thank you!
-jera