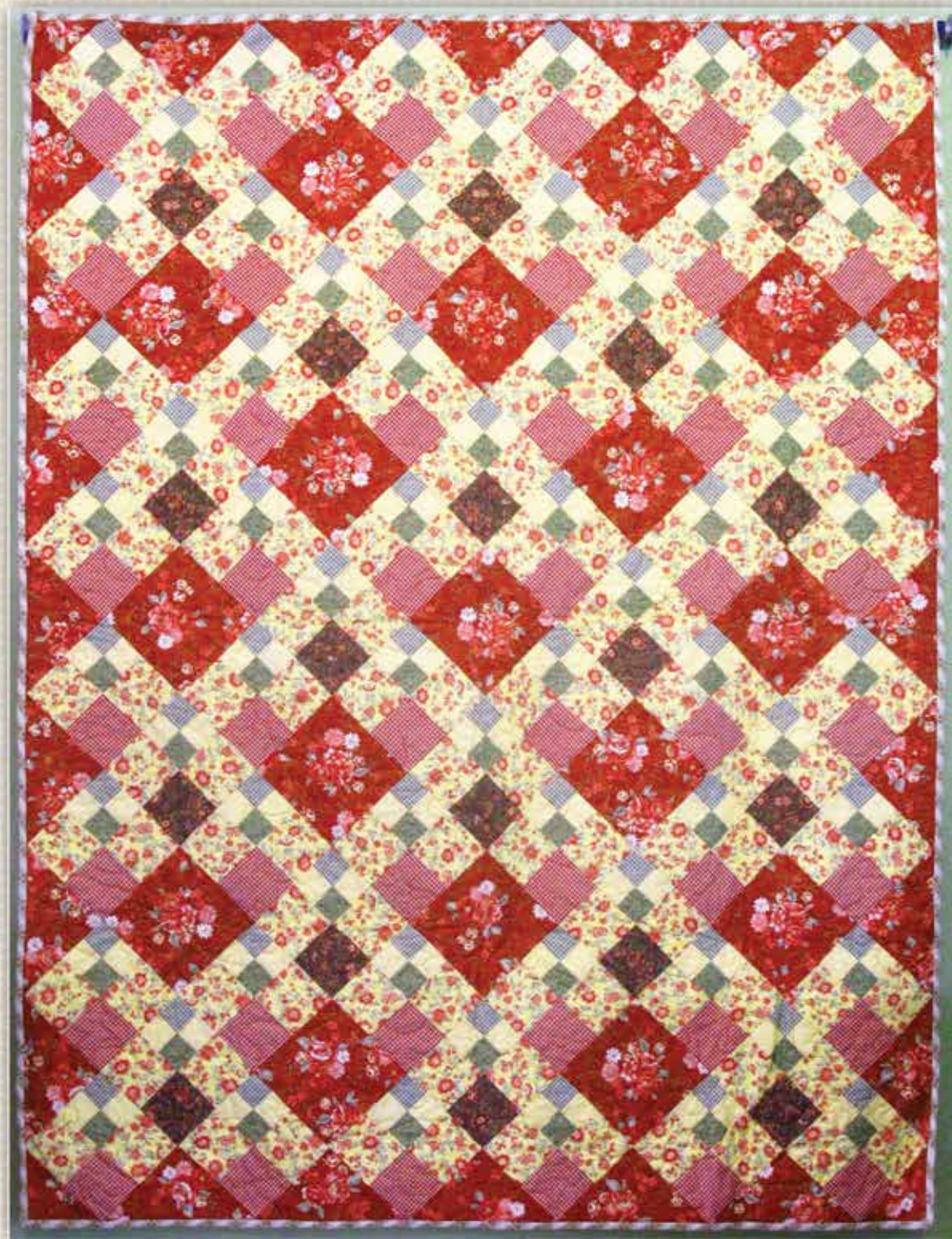


Free Pattern
Featuring
Quilter's First

By Lynn Kraus for FiberFlies

Country Kitchen

52" x 69-1/2"



To view Quilter's First, please visit www.lecienusa.com or www.lecien.co.jp/en/hobby

FIBER FLIES[™]
FIBER ARTS | TEXTILES  **QUILTING ADVENTURES**
www.FiberFlies.com

LECIEN
LECIEN U.S.A., Inc.

Country Kitchen

Quilter's First

By Lynn Kraus for FiberFlies

52" x 69-1/2"

Easy French country fun in 3 color choices. Only squares, setting triangles, and one pieced block, done in 2 colorways, set on-point.

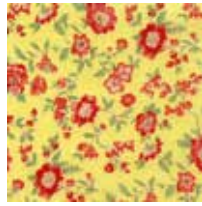
Fabric Requirements



30496-30

1-1/2 yd

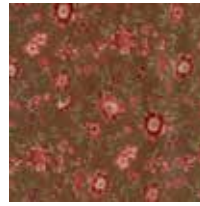
Squares & setting triangles



30300-50

1-3/8 yd

Yellow flowers for pieced blocks



30300-80

1/4 yd

Brown accent for 18 pieced blocks



30297-50

1/2 yd

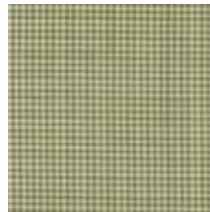
Yellow for small 4 patch



30298-30

1/2 yd

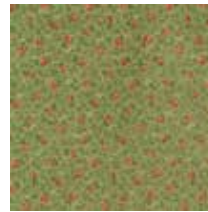
Red accent for 48 pieced blocks



30298-61

1/4 yd

'Top' of small 4 patch



30299-60

1/4 yd

'Bottom' of small 4 patch



30497-60

1/2 yd

Binding

Batting & Backing



Your choice

58" x 76"

Batting

30298-30 or your choice

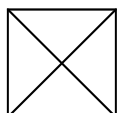
3-1/4 yd – pieced horizontally

Backing

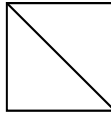
Cutting

Main focus fabric (30496-30)

1. Cut (6) 10" squares for *side* setting triangles. Cut each square on both diagonals to make a total of 24 side setting triangles. Label and set aside.



2. Cut (2) 5-1/2" squares for **corner** setting triangles. Cut each square on one diagonal to make a total of 4 corner setting triangles. Label and set aside.



3. Cut (17) 6-1/2" squares. Fussy cut, if desired. Set aside.

4. For small 4-patches, cut 2" strips by width of fabric:
- 3 strips each of green flower (30299-60) & green check (30298-61), and one 2" x 7" strip of both greens
 - 7 strips of yellow dot (30297-50)

5. For other squares, cut 3-1/2" strips by width of fabric:
- 12 strips of yellow flower (30300-50)
 - 2 strips of brown flowers (30300-80)
 - 4 strips of red checks (30298-30)

9. Sew the yellow flower squares to the 4-patches so that the green check is not toward the seam. Press toward yellow flower.



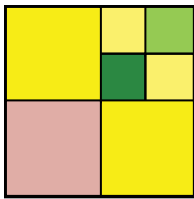
10. Sew the remaining yellow flower 3-1/2" strips to the red check and brown flower 3-1/2" strips. Press toward yellow strip. Cut strip sets every 3-1/2", into 3-1/2" x 6-1/2" rectangles. Make 18 brown rectangles and 48 red rectangles.

11. Sew the strips containing the 4-patches to the red and brown squares so that the green check is not toward the seam. Press. Make 18 blocks containing brown and 48 blocks containing red.

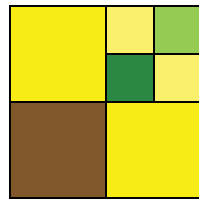
Assemble

All seams are 1/4".


Blocks




Red Block
Make 48



Brown Block
Make 18

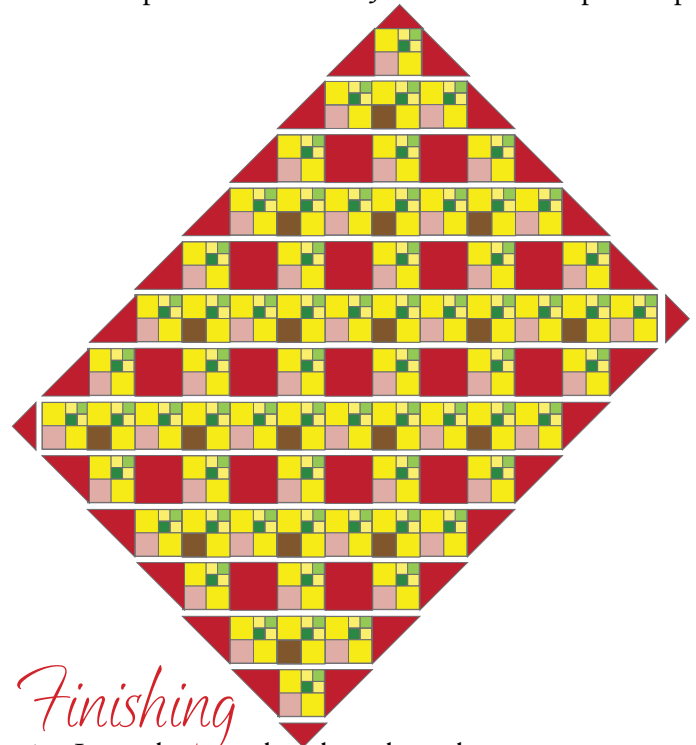
6. Make 4-patches first. Sew all green 2" strips to the yellow dot 2" strips. Press toward green. Cut strip sets every 2", into 2" x 3-1/2" rectangles. 

7. Sew one green flower rectangle to one green check rectangle. Press. Make 66. 

8. Cut (5-1/2) 3-1/2" yellow flowers strips into 3-1/2" squares. Cut 66.

Layout

12. Layout pieced blocks, squares and setting triangles as shown in diagram. Join into rows. Press seams away from pieced red blocks. Join rows to complete top.



Finishing

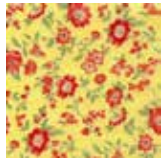
1. Layer, baste and quilt as desired.
2. Cut binding fabric (30497-60) in 2-1/2" strips ON BIAS to create the diagonal stripe effect – much more dynamic than straight cut. Bind.
3. Celebrate with a baguette, brie, a tart apple and a crisp white wine followed by Belgium chocolate.

Blue Colorway



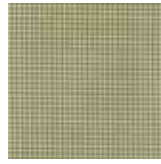
30496-70
1-1/2 yd

Squares & setting
triangles



30300-50
1-3/8 yd

Yellow flowers for
pieced blocks



30298-61
1/4 yd

Green accent for 18
pieced blocks



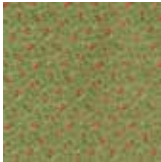
30297-50
1/2 yd

Yellow for small
4 patch



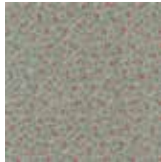
30300-70
1/2 yd

Blue accent for 48
pieced blocks



30299-60
1/4 yd

'Top' of small 4
patch



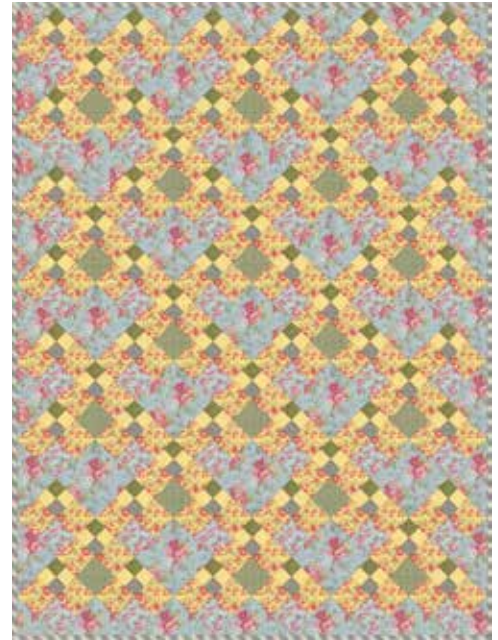
30299-70
1/4 yd

'Bottom' of small 4
patch



30497-70
1/2 yd

Binding

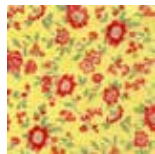


Green Colorway



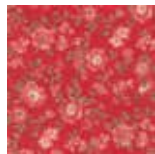
30496-60
1-1/2 yd

Squares & setting
triangles



30300-50
1-3/8 yd

Yellow flowers for
pieced blocks



30300-30
1/4 yd

Red accent for 18
pieced blocks



30297-50
1/2 yd

Yellow for small
4 patch



30300-60
1/2 yd

Green accent for 48
pieced blocks



30298-30
1/4 yd

'Top' of small 4
patch



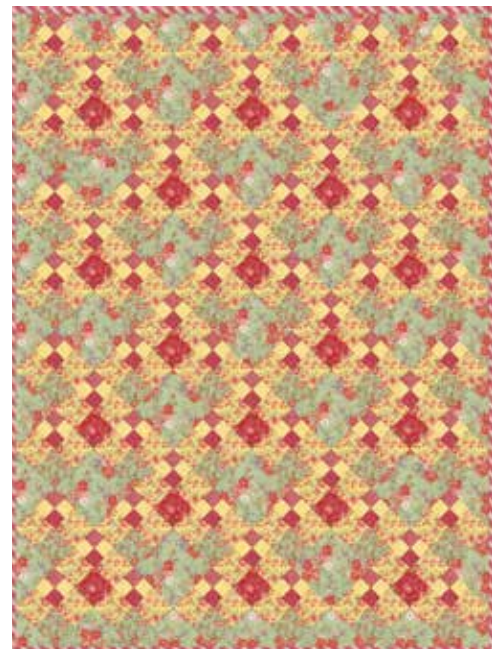
30299-30
1/4 yd

'Bottom' of small 4
patch



30497-30
1/2 yd

Binding



LECIEN U.S.A., Inc.
www.lecienusa.com

FIBERFLIES™
FIBER ARTS | TEXTILES | QUILTING ADVENTURES

www.FiberFlies.com

LECIEN
www.lecien.co.jp/en/hobby

©2012 FiberFlies. All Rights Reserved.