

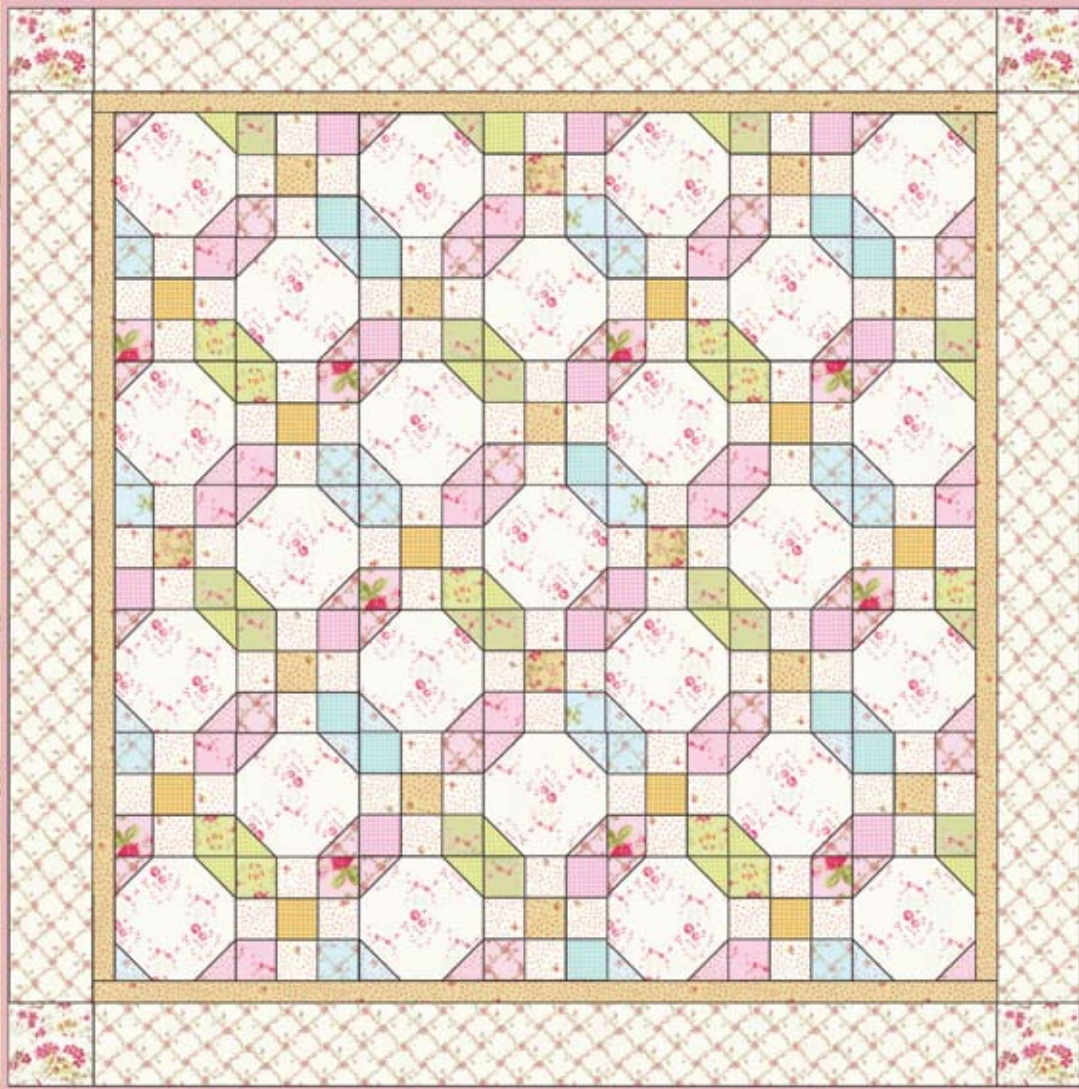
Durhamshire

free pattern

by Brenda Riddle of *Acorn Quilt & Gift Company*



featuring *Durham Anew* by **LECIEN**



53" x 53"

To view the *Durham Anew* fabric collection, & to download Brenda Riddle's free pattern, please visit www.lecien.co.jp/en/hobby/ or www.lecienusa.com/free-patterns/



LECIEN

Durham Anew

by Brenda Riddle of

Acorn Quilt & Gift Company

YARDAGE:

1/8 yard of each of the following prints:
(for 9-patch blocks & snowball blocks)

- green - 35025-60
- green - 35028-60
- blue - 35026-70
- blue - 35027-70
- pink - 35026-20
- pink - 35028-20
- vintage tan - 35028-11

1/4 yard of the following print:
(for 9-patch blocks & snowball blocks)

- pink - 35027-20

3/8 yard of the following print:
(for 9-patch centers & inner border)

- vintage tan - 35026-11

2/3 yard of the following print:
(for outer border)

- off white - 35027-10

5/8 yard of each of the following prints:
(for 9-patch blocks)

- off white - 35026-10
- (for outer border corners & binding)
- off white - 35024-10

1 yard of the following print:
(for snowball blocks)

- off white - 35025-10

3 3/8 yard:

- backing fabric

CUTTING:

9-patch block cutting:

- From assorted greens, cut two (2) 2 1/2" strips, From these strips, cut 24 2 1/2" x 2 1/2" green squares.
- From assorted blues, cut two (2) 2 1/2" strips, From these strips, cut 24 2 1/2" x 2 1/2" blue squares.
- From assorted pinks, cut four (4) 2 1/2" strips, From these strips, cut 48 2 1/2" x 2 1/2" pink squares.
- From assorted vintage tans, cut two (2) 2 1/2" strips, From these strips, cut 24 2 1/2" x 2 1/2" vintage tan squares.
- From off-white (35026-10), cut eight (8) 2 1/2" strips, From these strips, cut 96 2 1/2" x 2 1/2" off white squares.

Snowball block cutting:

- From assorted greens, cut two (2) 2 1/2" strips, From these strips, cut 25 2 1/2" x 2 1/2" green squares.
- From assorted blues, cut two (2) 2 1/2" strips, From these strips, cut 25 2 1/2" x 2 1/2" blue squares.
- From assorted pinks, cut four (4) 2 1/2" strips, From these strips, cut 50 2 1/2" x 2 1/2" pink squares.
- From off-white (35025-10), cut five (5) 6 1/2" strips, From these strips, cut 25 6 1/2" x 6 1/2" off white squares.

Inner border cutting:

- From vintage tan (35026-11), cut five 1 1/2" strips. Sew strips together end to end & from this long strip, cut two (2) 42 1/2" lengths, & also cut two (2) 44 1/2" lengths.

Outer border cutting:

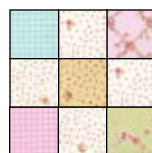
- From off-white lattice (35027-10), cut five 4 3/4" strips. Sew strips together end to end & from this long strip, cut four (4) 44 1/2" lengths.
- From off-white medium (35024-10), cut four (4) 4 3/4" x 4 3/4" squares.

ASSEMBLY:

9-PATCH BLOCKS:

These were designed to be scrappy & will not all be the same

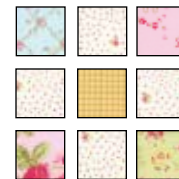
1. Take four (4) off-white 2 1/2" x 2 1/2" squares, two (2) pink 2 1/2" x 2 1/2" squares, one (1) green 2 1/2" x 2 1/2" square, one (1) blue 2 1/2" x 2 1/2" square, & one (1) vintage tan 2 1/2" x 2 1/2" square, & sew together, as shown - making sure the pink squares are place diagonally opposite corners. (Press seams toward color squares.)



2. Repeat to make 24 - 9-patch blocks.

(blocks should measure 6 1/2" x 6 1/2")

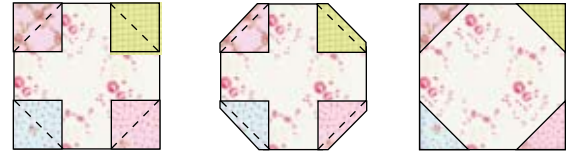
make 24



SNOWBALL BLOCKS:

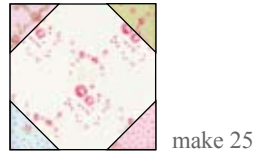
These were designed to be scrappy & will not all be the same.

3. Take two (2) pink $2\frac{1}{2}$ " x $2\frac{1}{2}$ " squares, one (1) green $2\frac{1}{2}$ " x $2\frac{1}{2}$ " square, & one (1) blue $2\frac{1}{2}$ " x $2\frac{1}{2}$ " square, & place on corners of a $6\frac{1}{2}$ " x $6\frac{1}{2}$ " off-white square, as shown, - making sure the pink squares are placed on diagonally opposite corners.



4. Sew with a diagonal seam, as shown,
5. Trim corners $\frac{1}{4}$ " away from the diagonal seam. (Press seams toward color triangle corners.)

6. Repeat to make 25 - snowball blocks.
(blocks should measure $6\frac{1}{2}$ " x $6\frac{1}{2}$ ")



QUILT TOP ASSEMBLY:

7. Following quilt layout, lay out 9-patch blocks & snowball blocks, as shown.
8. Sew together into rows, pressing seams toward 9-patch blocks,
9. Sew rows together, pressing seams open. (quilt center should measure $42\frac{1}{2}$ " x $42\frac{1}{2}$ ")

10. For the inner border, take the $1\frac{1}{2}$ " x $42\frac{1}{2}$ " strips, & sew to each side of the quilt center.
Press seams toward border.

11. Next, take the $1\frac{1}{2}$ " x $44\frac{1}{2}$ " strips, & sew to the top & bottom of the quilt center.
Press seams toward border.

12. For the outer border, sew one of the $4\frac{3}{4}$ " x $44\frac{1}{2}$ " border strips to each side of the quilt center.
Press seams toward inner border.

13. Sew a $4\frac{3}{4}$ " x $4\frac{3}{4}$ " medium floral square to each end of the remaining outer border strips.
Press seams toward corner squares.

14. Sew these border strips to the top & the bottom of the quilt center.
Press seams toward inner border.

- Quilt & bind as desired.

(sample used the same fabric as the corner squares (off-white - medium floral) for the outer border for the binding.)

