

# Scattered Hearts

A Free Pattern Featuring "Follow My Heart" Fabrics by

Lynette Anderson Designs



Quilt Design by: Cate Tallman-Evans

Finished Quilt Size: 63" x 81"



Machine Quilted by: Darlene Szabo

Sample Made by: Kay Harmon

To view more from Lynette Anderson Designs, please visit  
[www.lynetteandersondesigns.com.au](http://www.lynetteandersondesigns.com.au)

OR

Lynette's Blog at  
<http://www.lynetteandersondesigns.typepad.com/>

©2012 Lynette Anderson Designs

LECIEN U.S.A., Inc.

**LECIEN**  
[www.lecien.co.jp/en/hobby/](http://www.lecien.co.jp/en/hobby/)  
[info@lecien.co.jp](mailto:info@lecien.co.jp)

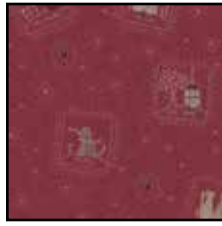
[www.lecienusa.com](http://www.lecienusa.com)  
[info@lecienusa.com](mailto:info@lecienusa.com)

# Scattered Hearts

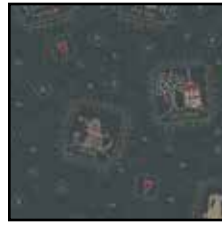
## Materials for the Quilt



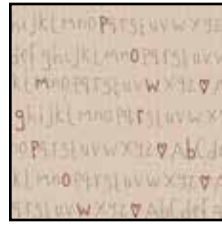
35010-12  
½ yard



35010-31  
⅝ yard



35010-71  
⅝ yard



35011-11  
½ yard



35011-31  
⅝ yard



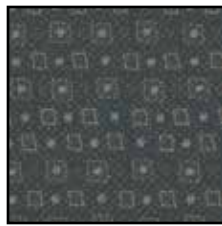
35011-71  
⅝ yard



35012-11  
½ yard



35012-31  
⅝ yard



35012-71  
⅝ yard



35012-80  
½ yard



35013-11  
½ yard



35013-31  
⅝ yard



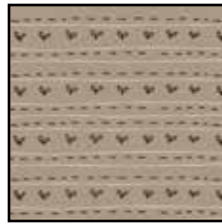
35013-71  
⅝ yard



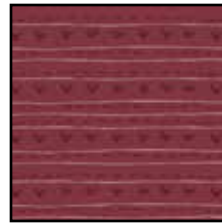
35013-80  
⅝ yard



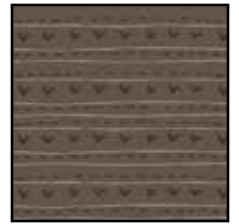
35014-11  
½ yard



35014-12  
½ yard



35014-31  
⅝ yard



35014-80  
⅝ yard



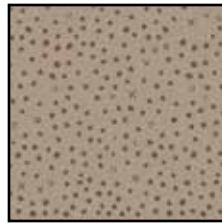
35015-11  
½ yard



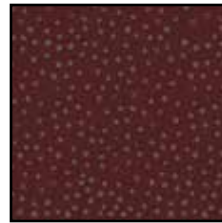
35015-31  
⅝ yard



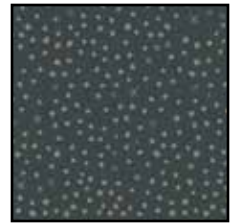
35015-80  
⅝ yard



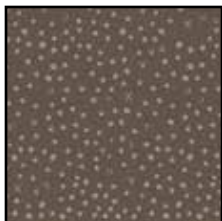
35016-11  
½ yard



35016-31  
⅝ yard



35016-71  
⅝ yard



35016-80  
⅝ yard



9046-02  
1 yard



9046-01  
½ yard



9053-16  
⅝ yard

## Additional Materials

Template plastic

All supplies necessary for your chosen method of appliqué

Usual sewing and rotary cutting supplies

5½ yards of fabric for quilt backing

71" x 89" piece of batting

## Cutting Instructions

*Note: All strips are cut across the width of the fabric from selvage edge to selvage edge.*

**From EACH of the (5) brown fabrics, cut:**

(2) 5" strips. Recut into (16) 5" x 5" squares.

**From EACH of (2) tan fabrics, cut:**

(1) 2¾" strip. Recut into (16) 2¾" x 2¾" squares.

(6) 2" strips.

**From EACH of (3) tan fabrics, cut:**

(7) 2" strips.

**From EACH of the (5) cream fabrics, cut:**

(1) 5½" strip. Recut into (4) 5½" x 5½" squares.

(3) 2¾" strips. Recut into (45) 2¾" x 2¾" squares.

**From EACH of the (5) blue fabrics, cut:**

(3) 2½" strips. Recut (2) strips into (8) 2½" x 9½" pieces. Recut (1) strip into (7) 2½" x 5½" pieces.

(1) 2¼" strip. Recut into (14) 2¼" x 2¼" squares.

**From EACH of the (3) dark red fabrics, cut:**

(1) 4¼" strip. Recut into (6) 4¼" x 4¼" squares.

(3) 2¼" strips for the binding.

Reserve unused dark red fabric for appliqués.

**From the dark red yarn dye, cut:**

(8) 2" strips. Set aside (6) strips for the inner border. Set aside (2) strips for the appliqué flower centers. From the remaining fabric, cut enough bias strips to yield (32) ½" wide x 12" long bias stems using your favorite method.

**From EACH of the (4) red print fabrics, cut:**

Reserve all yardage for appliqués.

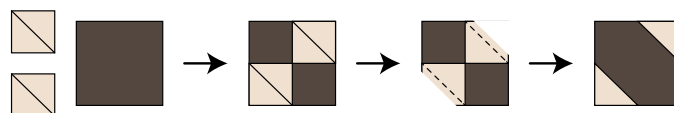
## Sewing Instructions

*Note: All seams are sewn using ¼" seam allowance with right sides held together and raw edges even.*

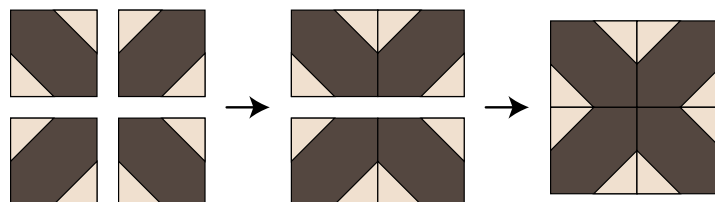
### Brown Kisses Blocks

1. Referring to the diagram at the top of the next column, draw diagonal lines on the wrong sides of (2) 2¾" cream squares. Right sides together, layer the marked squares in opposite corners of a 5" brown square. Sew on the marked lines. Trim ¼"

beyond the seam lines and press the resulting cream triangles out to make the unit shown. Repeat to make a total of (4) units.



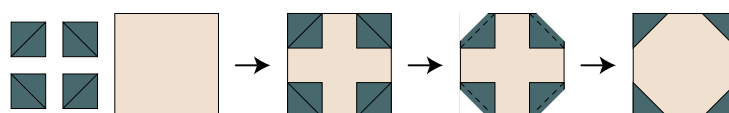
2. Arrange the units made in step 1 into (2) rows with (2) units in each row, noting orientation. Stitch the units into rows and sew the rows together to make (1) 9½" x 9½" block (9" finished size).



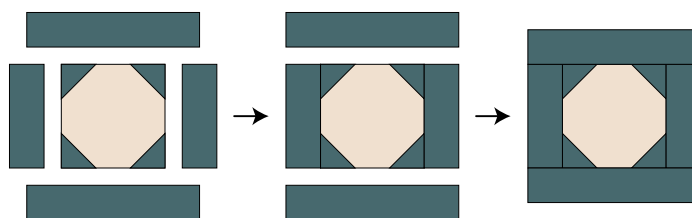
3. Repeat steps 1 and 2 to make a total of (18) brown and cream Kisses Blocks.

### Hugs Blocks

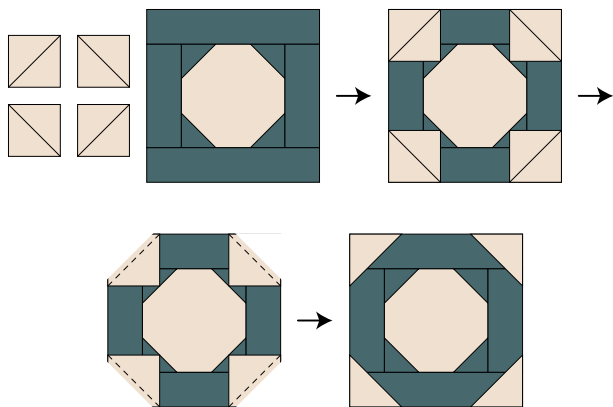
1. Draw diagonal lines on the wrong sides of (4) 2¼" blue squares. Right sides together, layer a marked square in each corner of a 5½" cream square. Sew on the marked lines. Trim ¼" beyond the seam lines and press the resulting blue triangles out to make (1) block center unit as shown.



2. Stitch 2½" x 5½" blue pieces to the left and right sides of the block center. Stitch 2½" x 9½" blue pieces to the top and bottom of the block center.



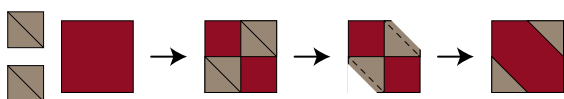
3. Referring to the diagram on the next page, draw diagonal lines on the wrong sides of (4) 2¾" cream squares. Right sides together, layer a marked cream square in each corner of the unit from step 2. Stitch on the marked lines. Trim ¼" beyond the seam lines and press the resulting cream triangles out to make the unit shown.



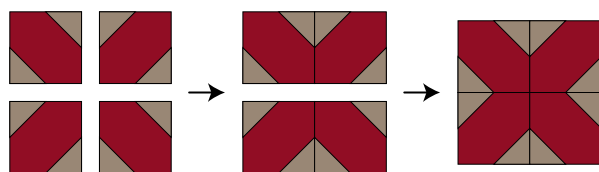
4. Repeat steps 1-3 to make a total of (17) 9½" x 9½" blue Hugs Blocks (9" finished size).

## Red Kisses Blocks

1. Draw diagonal lines on the wrong sides of (2) 2¾" tan squares. Right sides together, layer the marked squares in opposite corners of a 4¼" dark red square. Sew on the marked lines. Trim ¼" beyond the seam lines and press the resulting tan triangles out to make the unit shown. Repeat to make a total of (4) units.



2. Arrange the units made in step 1 into (2) rows with (2) units in each row, noting orientation. Stitch the units into rows and sew the rows together to make (1) 8" x 8" block (7½" finished size).



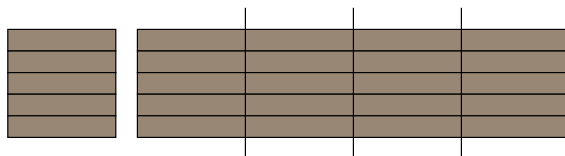
3. Repeat steps 1 and 2 to make a total of (4) dark red and tan Kisses Blocks.

## Quilt Assembly

1. Using the quilt pictured on the cover as a guide, arrange the brown Kisses and blue Hugs Blocks into (7) rows with (5) blocks in each row, alternating the two types of blocks as shown. Stitch the blocks into rows. Sew the rows together to complete the quilt center.

2. Trim the selvages from the (6) 2" dark red yarn dye strips. Stitch the strips together end to end to make a long 2" strip. From this long strip, cut (2) 63½" and (2) 48½" lengths. Stitch the longer lengths to the left and right sides of the quilt top. Sew the shorter lengths to the top and bottom.

3. Sewing lengthwise, stitch together (5) assorted 2" tan strips to yield (1) 8" high strip set. Repeat to make a total of (6) identical strip sets. From these strip sets, cut a total of (30) 8" wide segments.



4. Sewing lengthwise, stitch together (3) assorted 2" tan strips to yield (1) 5" high strip set. From this strip set, cut (5) 8" wide segments.



5. Stitch together the strip set segments made in steps 3 and 4 to make a long, 8" wide, pieced strip. From this long strip, remove (2) sections, each (44) segments long and (2) sections, each (32) segments long.

6. Stitch the longer pieced borders from step 5 to the left and right sides of the quilt top. Stitch red Kisses Blocks to each end of the (2) shorter pieced borders from step 5. Sew these borders to the top and bottom of the quilt top.

## Appliqué and Finishing

1. Using template plastic and the paper patterns provided, make templates for the: large heart, small heart, flower center, and flower shapes. Please note that the paper patterns provided are full size, are not reversed, and do not include seam allowances.

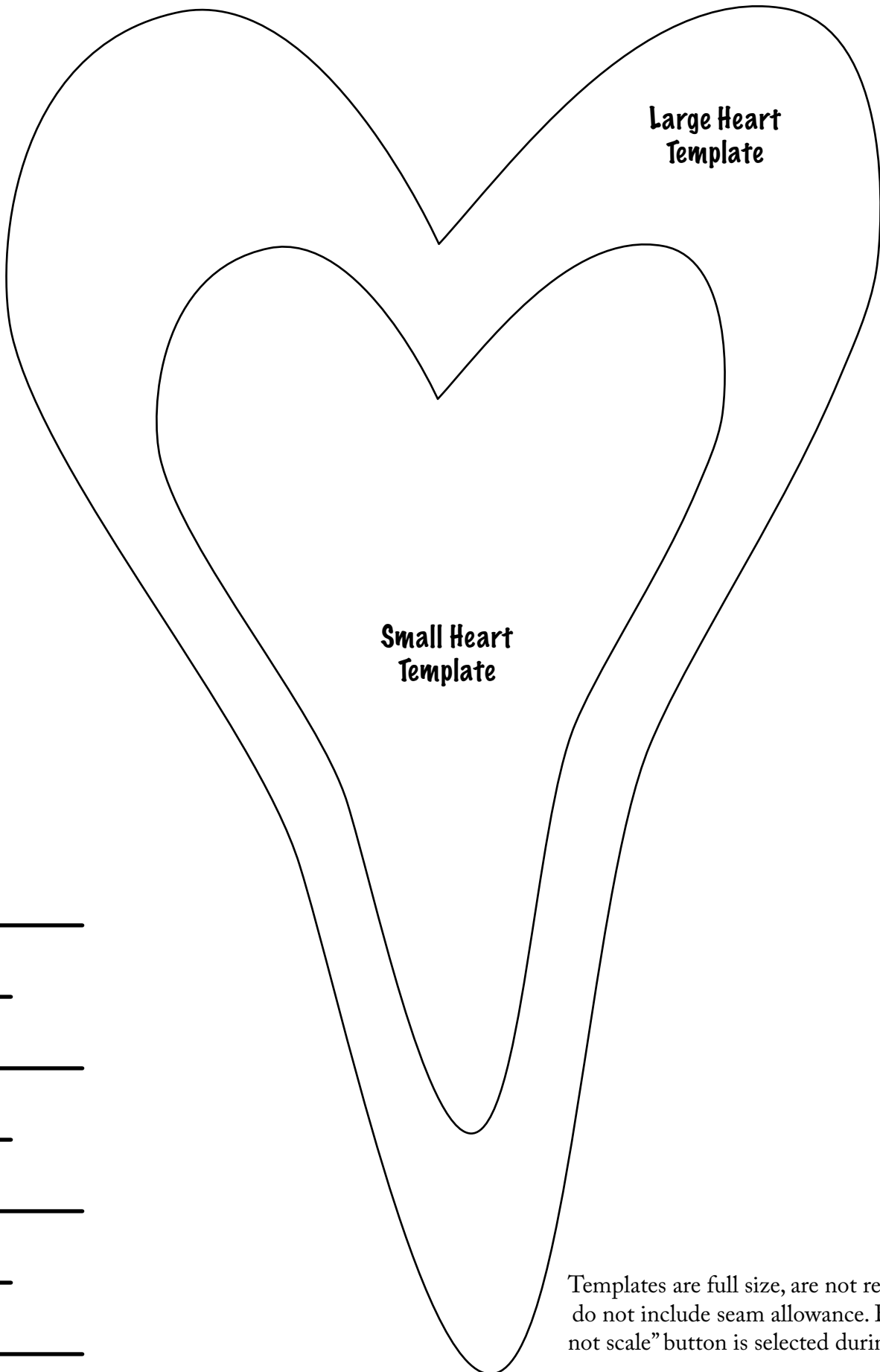
2. As necessary for your preferred method of appliqué, prepare (10) red print large hearts, (10) dark red small hearts, (19) red print flowers, (9) dark red flowers, and (28) dark red yarn dye flower centers.

3. Appliqué a dark red small heart to each red print large heart using your favorite method. Using the quilt pictured on the cover as a guide, appliqué the heart units to the quilt top center.

4. Again using the quilt pictured on the cover as a guide, arrange the flower motifs on top of the pieced outer border. Once you have the flowers placed in a pleasing arrangement, place the flower centers and bias stems as necessary. Appliqué all flowers, flower centers, and vines to the border using your favorite method.

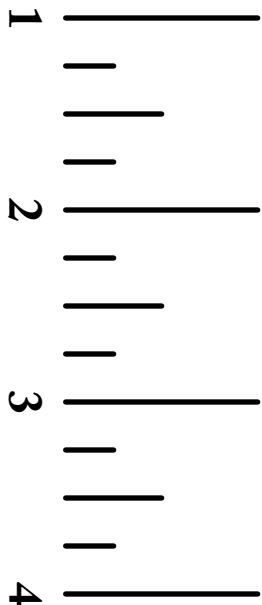
5. Layer the completed quilt top with batting and backing and quilt as desired.

6. Bind the finished quilt using the 2¼" dark red strips.

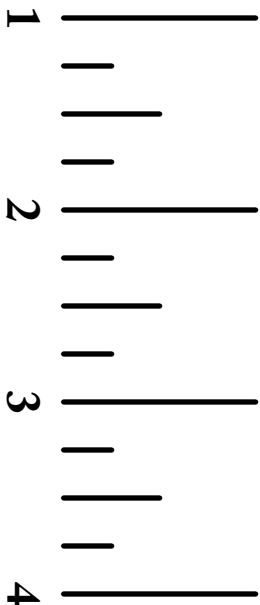
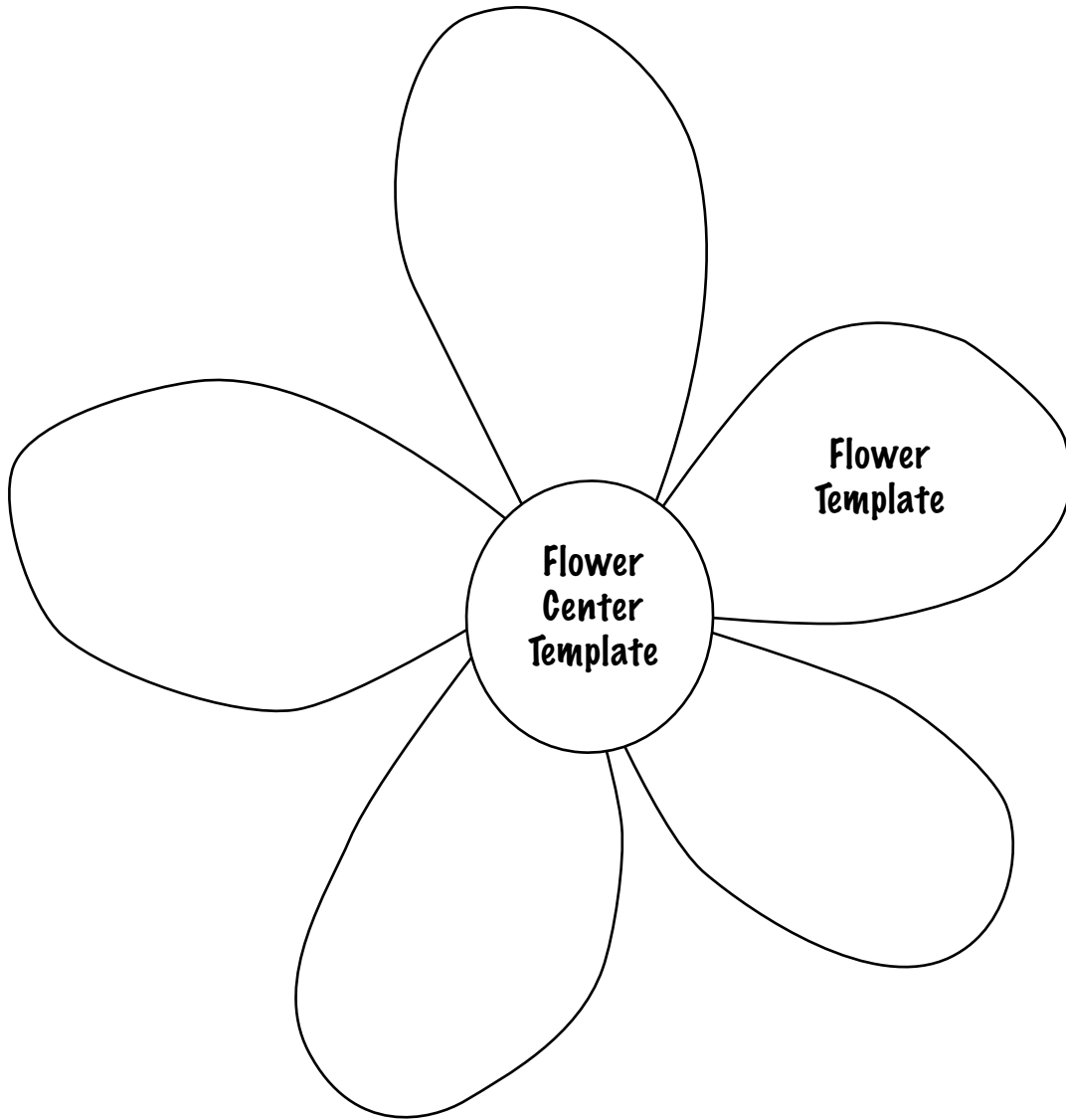


**Large Heart  
Template**

**Small Heart  
Template**



Templates are full size, are not reversed, and do not include seam allowance. Be sure "do not scale" button is selected during printing.



Templates are full size, are not reversed, and do not include seam allowance. Be sure "do not scale" button is selected during printing.