

WoodLand

by Natalie Lymer of Cinderberry Stitches



Woodland Utopia



To view the new "Woodland" collection and to download Natalie Lymer's free pattern
Please visit www.lecien.co.jp/en/hobby and www.lecienusa.com

LECIEN
LECIEN U.S.A., Inc.

Designed by Nataie Lymer
www.cinderberrystitches.com

cinderberrystitches
by Natalie Lymer

Woodland Utopia

68 1/2" x 55 1/2"

cinderberystitches
by Natalie Lymer

Fabric requirements:

- 16" (40cm) of seven assorted Woodland fabrics
- 20" (20cm) of aqua fabric (binding)
- 65" (1.6m) of plain white fabric (borders & sashing)
- 4yards (3.5m) of backing fabric

Cutting details:

From Woodland fabric cut:

- Sixty-three assorted 6 1/2" squares as below.
- Seven 2 1/2" strips x width of fabric (binding).
- 10 x pink
- 8 x white
- 8 x Olive
- 9 x yellow
- 9 x gray
- 9 x Aqua
- 10 x Red
- 7 x Aqua strips

From plain white fabric cut:

- Fifty-four 1 1/2" x 6 1/2" strips.
- Ten 1 1/2" strips x width of fabric (sashing)
- Seven 4 1/2" strips x width of fabric (border)

Making your quilt

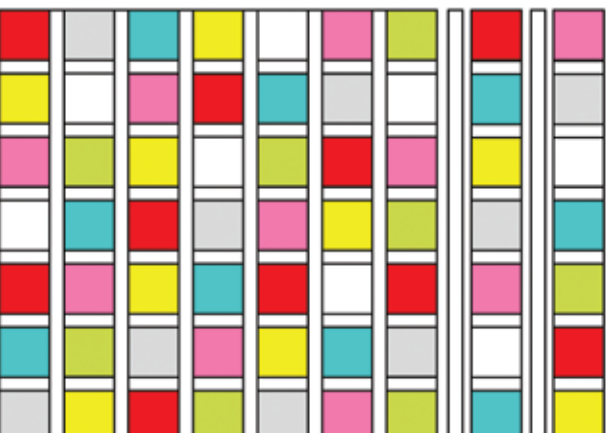
1. Take one 6 1/2" square and one 6 1/2" x 1 1/2" white strip, place the strip along the left side of the square matching raw edges and pin.
2. Sew along the 6 1/2" edge and press to one side, open and press - repeat to make fifty four of these blocks.



3. Take one 6 1/2" square and six assorted pieced blocks, lay them together side by side. Pin and sew blocks together along the 6 1/2" edge forming one strip, open and press - repeat to make nine pieced rows.



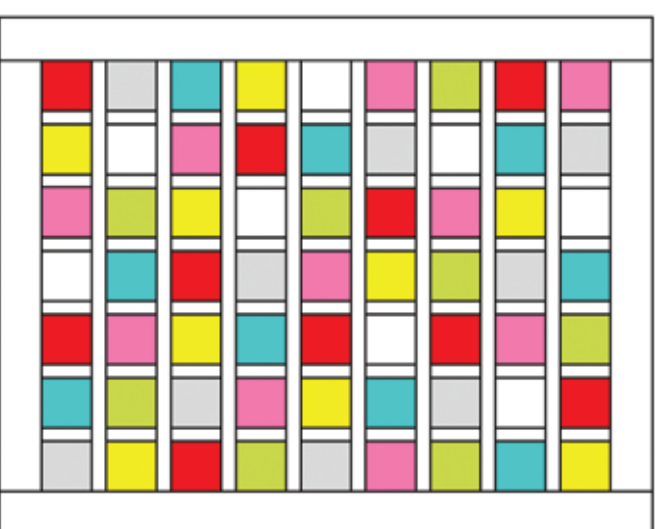
4. From the ten 1 1/2" x width of fabric strips create eight strips each measuring 48 1/2". Lay the nine pieced rows and 1 1/2" x 48 1/2" white strips one below the other. Match raw edges and sew the strips and rows together along the 48 1/2" edge, open and press.



5. From the seven 4 1/2" strips x width of fabric create two strips each measuring 48 1/2" and two strips each measuring 70 1/2".

6. Sew a 4 1/2" x 48 1/2" border strip to the top and bottom of the quilt open and press.

7. Sew a 4 1/2" x 70 1/2" border strips to each side of the quilt, open and press.



8. Layer the quilt top, wadding and backing fabric and baste together - quilt as desired.

9. Sew the seven 2 1/2" strips together end to end and use this as the binding for your quilt.