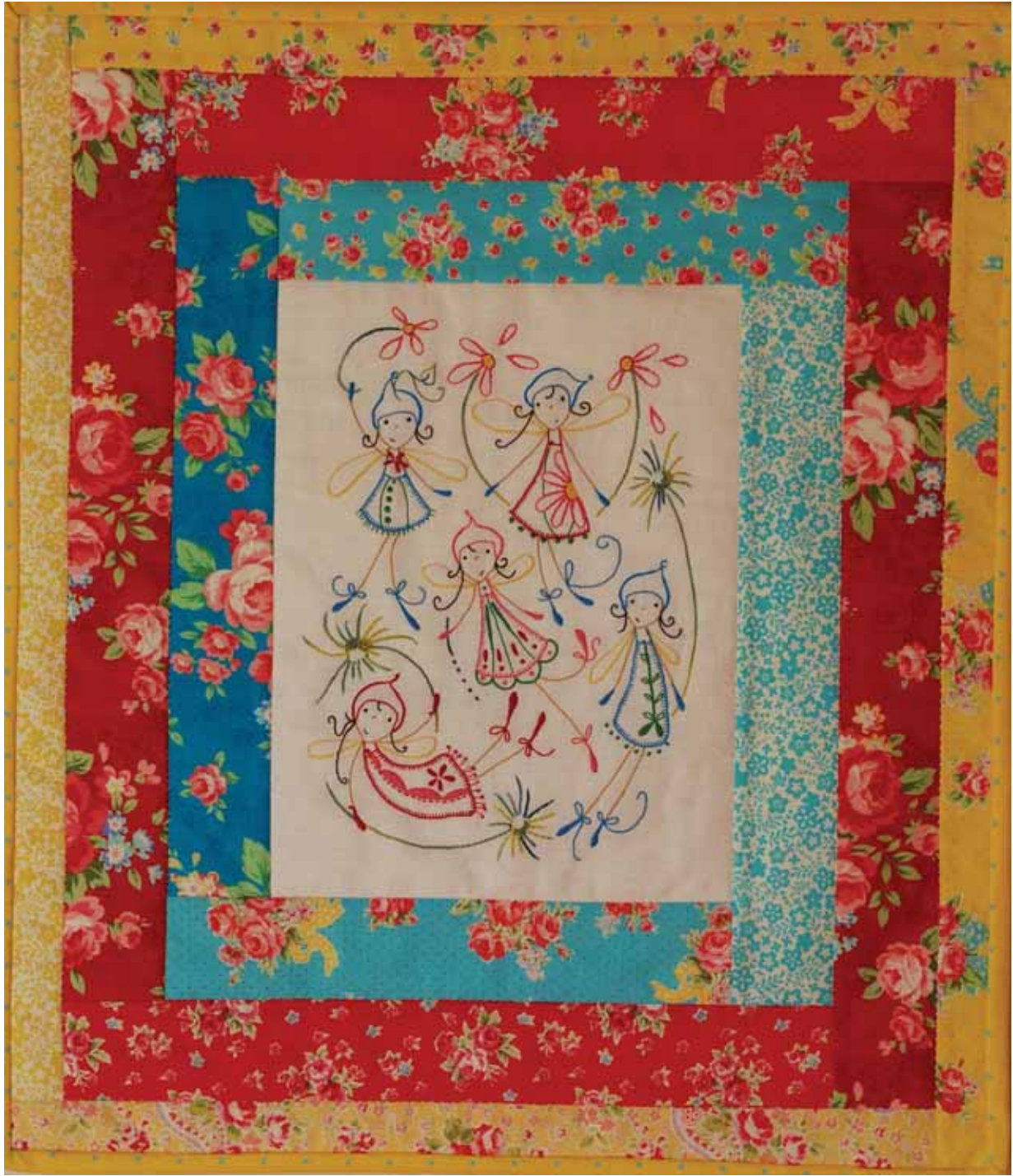


FLOWER SUGAR Woodland Faeries

Free Pattern
LECIEN

cinderberrystitches
by Natalie Lymer



Designed and stitched by Natalie Lymer of Cinderberry Stitches

19 ½" x 22 ½"

Cinderberry Stitches by Natalie Lymer
www.cinderberrystitches.com
PO Box 1118 Geelong Vic 3220, Australia
Ph. +613 5241 6881
cinderberry@ozemail.com.au

To view "COSMO" Embroidery Thread
& Flower Sugar Collection
And download Natalie Lymer's free pattern,
Please visit www.lecien.co.jp/en/hobby/

Woodland Faeries – A free pattern for you from Cinderberry Stitches, Lecien and Cosmo

From Flower Sugar fabrics:

- 6" blue print or four assorted 2½" strips
- 6" red print or four assorted 2½" strips
- 4" yellow print or four assorted 1½" strips
- 8" yellow spot (binding) or three 2½" strips
- 1 fat quarter of linen fabric for embroidery

Cutting guide:

- Linen and interfacing cut: one 9½" x 12½" rectangle
- Blue print cut: two 2½" x 11½" and two 2½" x 14½" strips
- Red print cut: two 2½" x 15½" and two 2½" x 18½" strips
- Yellow print cut: two 1½" x 18½" and two 1½" x 21½" strips
- Yellow spot binding cut: three 2½" strips x width of fabric

Stitching & Cosmo thread guide:

All faerie wings	700	backstitch
Faces, arms & legs	307	backstitch
All faerie hair styles	312	backstitch
All faerie smiles (1 strand)	312	backstitch
All faerie eyes	312	satin stitch
All stems and dandelion's	8020	chain stitch
Dandelion centre	8020	french knots
Pink daisies	114	backstitch
Daisy centre	700	french knots
Outline (daisy centre)	241A	back stitch

Faerie A & E / top left & bottom right

Hat, bodice & laces	413	backstitch
Gloves and shoes	413	satin stitch
Skirt (1 strand)	413	blanket stitch
Spots on skirt & hem	336	satin stitch
Detail on skirt	336	back stitch
Flower on bodice	241A	lazy daisy

Faerie B / top right

Hat & laces	413	backstitch
Gloves and shoes	413	satin stitch
Dress (1 strand)	241A	blanket stitch
Spots on hem	336	satin stitch

Faerie C / middle

Hat, laces & spots on hem	114	back stitch
Gloves & shoes	114	satin stitch
Dress (1 strand)	114	blanket stitch
Dress pleats & hem	336	chain stitch
Flowers on dress	241A	satin stitch

Faerie D / bottom left

Hat & laces	241A	back stitch
Dress (1 strand)	241A	blanket stitch
Flower on dress	241A	satin stitch
Dotted line	241A	running stitch
Scalloped detail	114	satin stitch
Hem on dress	114	back stitch
Spot on hem	241A	french knots

Cosmo embroidery threads & supplies:

114 pink	241A red
307 cream	336 green
413 turquoise	700 yellow
8020 Seasons	312 brown
Fine point pigma pen	Basic sewing supplies

Completed size: 19½" x 22½"

Featuring Flower Sugar by Lecien and Cosmo threads. Embroidery stitched with two strands of Cosmo floss unless otherwise noted.

Embroidery:

Trace stitchery design to the centre of the linen 9½" x 12½" rectangle using a fine tipped pigma pen.

Fuse cotton interfacing to the back of the stitching design and complete the embroidery. Once stitching is complete press lightly.

Quilt assembly:

All seams allowances are ¼inch.

1. Pin one blue 2½" x 11½" strip along the top edge of the embroidery panel with one end of the strip matching the top left corner of the panel. The other end of the strip will extend past the top right corner. Stitch the seam from the top left corner for about 8 inches and press the seam away from the embroidery panel.

2. Add another three blue strips, working in an anti-clockwise direction around the embroidery panel. Once the final blue strip is added sew the remaining seam of the first strip, which now extends across the top of the strip on the right edge of the panel.

3. Repeat steps 1 & 2 adding the second round of border strips. Begin by sewing one red 2½" x 15½" strip along the top edge of the panel using a partial seam as before. Continue to work in a clockwise direction using the remaining red strips to complete border number two.

4. Repeat steps 1 & 2 adding the third round of border strips. Begin by sewing one yellow 1½" x 18½" strip along the top edge of the panel using a partial seam as before. Continue to work in a clockwise direction using the remaining strips to complete border number three.

5. Lightly press the quilt top - back, quilt and bind your quilt as desire



LECIEN COSMO

COSMO Embroidery Thread
From Lecien

Made from top grade Egyptian Cotton

Soft, with a silken sheen

Colorfast in 443 colors*



visit: www.lecien.co.jp/en/hobby/

*Meets Japanese industrial standards