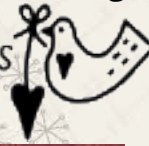


Wish Upon a Star

A Free Pattern

Featuring Fabrics from the Candy Cane Angels Collection by

Lynette Anderson Designs



Finished Quilt Sizes: 78" x 78"

Design by: Cate Tallman-Evans

Sample Made by: Kay Harmon

Machine Quilted by: Darlene Szabo

To view more from Lynette Anderson Designs, please visit
www.lynetteandersondesigns.com.au

OR

Lynette's Blog at

<http://www.lynetteandersondesigns.typepad.com/>

©2013 Lynette Anderson Designs

LECIEN U.S.A., Inc.

www.lecienusa.com
info@lecienusa.com

LECIEN

www.lecien.co.jp/en/hobby/
info@lecien.co.jp

Candy Cane Angels Fabrics



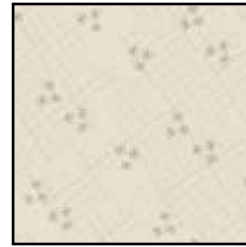
35037-10



35037-30



35037-80



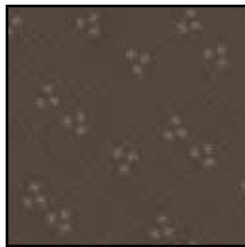
35038-10



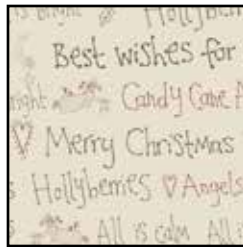
35038-30



35038-31



35038-80



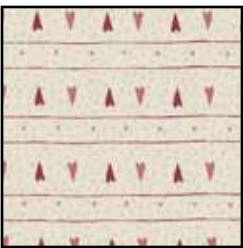
35039-10



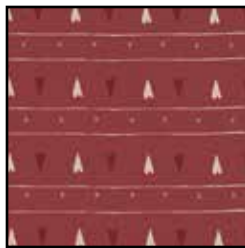
35039-30



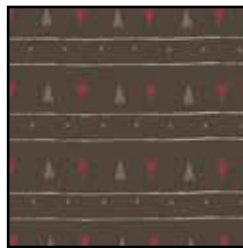
35039-80



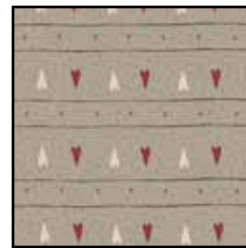
35040-10



35040-30



35040-80



35040-90



35041-10



35041-30



35041-31



35041-80



35042-10



35042-30



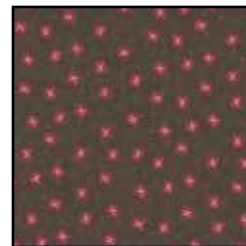
35042-80



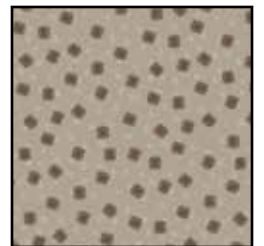
35043-10



35043-30



35043-80



35043-90

Wish Upon a Star

Instructions

Materials

- 1 fat quarter from **EACH** of seven brown fabrics:
35037-80, 35038-80, 35039-80, 35040-80,
35041-80, 35042-80, and 35043-80
- 1 fat quarter from **EACH** of seven cream/light brown fabrics:
35037-10, 35038-10, 35039-10, 35040-10,
35040-90, 35043-10, and 35043-90
- 2 fat quarters from **EACH** of two dark cream fabrics:
35041-10 and 35042-10
- 1 fat quarter from **EACH** of six red fabrics:
35038-30, 35039-30, 35040-30, 35041-30,
35042-30, and 35043-30
- 1 fat quarter from **EACH** of three dark red fabrics:
35037-30, 35038-31, and 35041-31
- 2½ yards Outer Border Fabric:
35037-10 **OR** 35037-80
- ⅝ yard Binding Fabric:
35042-30
- Template plastic
- All supplies necessary for your chosen method of appliqué
- Usual sewing and rotary cutting supplies
- 5 yards of fabric for quilt backing
- 86" x 86" piece of batting

Cutting Instructions

Note: All strips are cut across the width of the fabric from selvage edge to selvage edge. Fat quarter strips are cut across the selvage edge and should be approximately 22" long.

From **EACH** of the (7) brown fabrics, cut:

(6) 2½" strips. Recut into (48) 2½" x 2½" squares.

From **EACH** of 35038-10, 35039-10, 35040-10, and 35043-10, cut:

(3) 2½" strips. Recut into (24) 2½" x 2½" squares.

Reserve remaining fabric for star appliqués.

From **EACH** of 35037-10, 35040-90, and 35043-90, cut:

(6) 2½" strips. Recut into (48) 2½" x 2½" squares.

From **ONE** fat quarter of 35042-10, cut:

(6) 2½" strips. Recut into (48) 2½" x 2½" squares.

Reserve the second fat quarter for (3) star appliqués.

From **ONE** fat quarter of 35041-10, cut:

(6) 2½" strips. Recut into (48) 2½" x 2½" squares. Set aside (36) squares for the sashing cornerstones.

From **ONE** fat quarter of 35041-10, cut:

(3) 2½" strips. Recut into (24) 2½" x 2½" squares.

Reserve remaining fabric for star appliqués.

From **EACH** of the (6) red fabrics, cut:

(3) 2½" strips. Recut into (6) 2½" x 10½" sashing pieces.

Reserve remaining fabric for small and large heart appliqués.

From **EACH** of the (3) dark red fabrics, cut:

(4) 2½" strips. Recut into (8) 2½" x 10½" sashing pieces.

Reserve remaining fabric for medium heart appliqués.

From the outer border fabric, cut:

(8) 8½" strips.

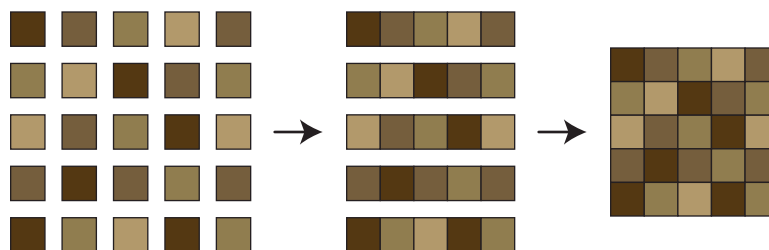
From the binding fabric, cut:

(8) 2¼" strips.

Sewing Instructions

Note: All seams are sewn using ¼" seam allowance with right sides held together and raw edges even.

- Referring to the diagram below, arrange (25) assorted 2½" brown squares into (5) rows with (5) squares in each row. Stitch the squares into rows and sew the rows together to complete (1) star block background measuring 10½" from raw edge to raw edge in both directions.



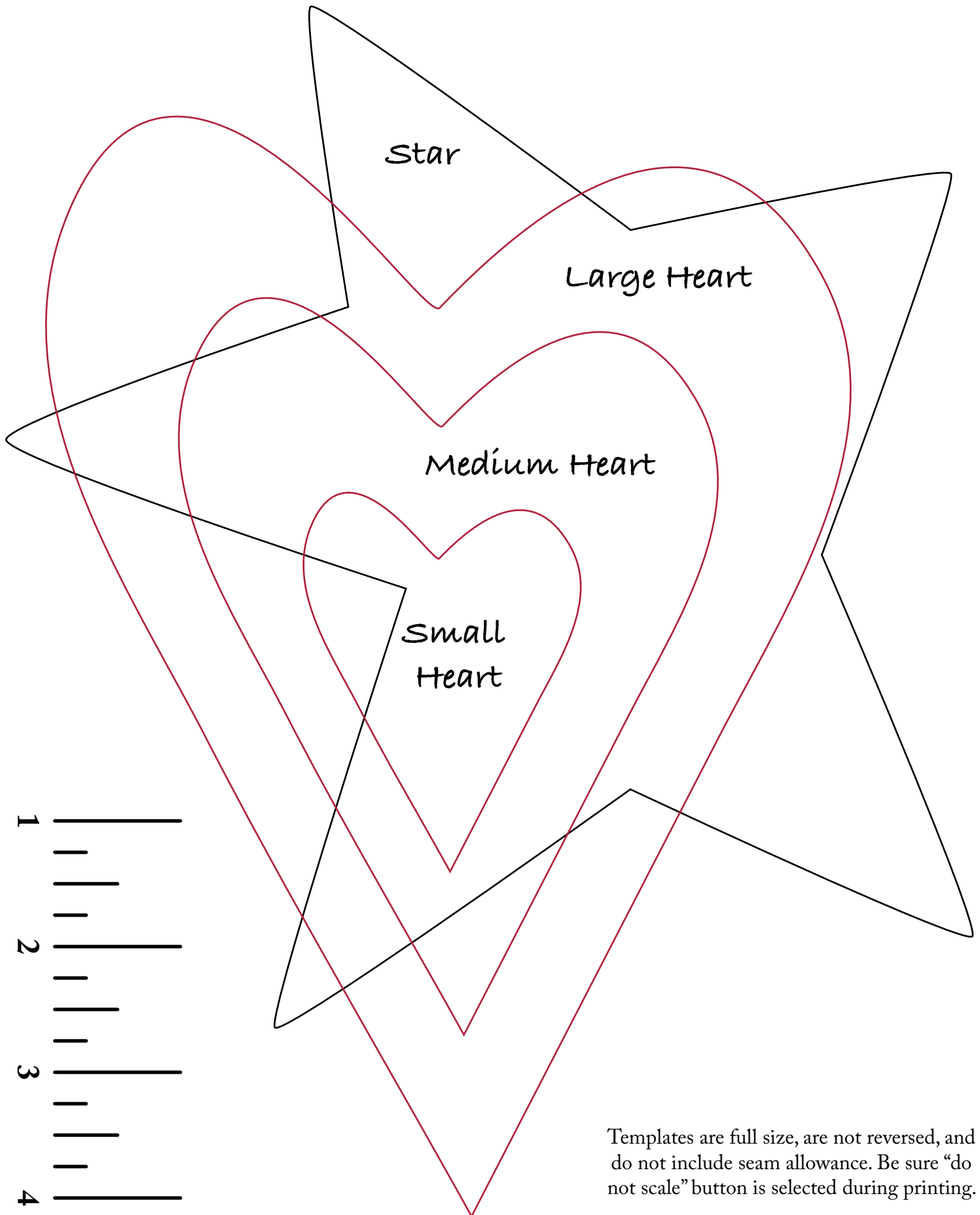
- Repeat the procedure from step 1 to make (12) heart block backgrounds using the assorted cream, light brown, and dark cream 2½" squares. **Do not** use the (36) 2½" dark cream squares set aside for the sashing cornerstones.

Appliqué

- Using template plastic and the paper patterns provided, make templates for the: large, medium, and small hearts, and the star. Please note that the paper patterns provided are full size, are not reversed, and do not include seam allowances.
- As necessary for your preferred method of appliqué, prepare: (12) red large heart motifs, (12) dark red medium heart motifs, (12) red small heart motifs, (8) cream star motifs, and (5) dark cream star motifs.
- Using the quilts pictured on the cover as a guide, appliqué a prepared red small heart motif to each dark red medium heart motif. Appliqué each of these units to a red large heart motif. Place a heart motif grouping on the right side of a 10½" pieced cream background block. Center the heart motifs in both directions on the pieced background square and appliqué the large heart motif to the square. Repeat to make a total of (12) heart blocks.
- Place a prepared star motif on the right side of a 10½" pieced brown background block. Center the star motif in both directions on the pieced background square and appliqué the star to the square. Repeat to make a total of (13) star blocks.
- Using the quilts pictured on the cover as a guide, arrange the blocks into (5) rows with (5) blocks in each row, alternating the two types of blocks, as shown. To make (1) block row, stitch together (6) 2½" x 10½" sashing pieces and (5) blocks, alternating the two types of units. Repeat to make a total of (5) block rows.
- To make (1) sashing row, stitch together (5) 2½" x 10½" sashing pieces and (6) 2½" dark cream sashing cornerstone squares, alternating the two types of units. Repeat to make a total of (6) sashing rows.
- To complete the quilt center, stitch together the block and sashing rows, alternating the two types of units and noting orientation.
- Trim the selvages and stitch together the 8½" outer border strips, end to end, to make a long 8½" strip. From this long strip, cut (2) 78½" and (2) 62½" lengths (*if your measurements are different, cut to fit your quilt top*). Stitch the shorter lengths to the left and right sides of the quilt top. Sew the longer lengths to the top and bottom.
- Layer the completed quilt top with batting and backing and quilt as desired. Bind the finished quilt using the 2¼" red binding strips.

Wish Upon a Star

Templates



Templates are full size, are not reversed, and do not include seam allowance. Be sure "do not scale" button is selected during printing.