

Forest Floor

A Free Pattern Featuring "Wildflower Wood" Fabrics by

Lynette Anderson Designs 

Finished Quilt Size: 68" x 88" | Quilt Design By Wendy Sheppard



To view more from Lynette Anderson Designs, please visit
www.lynetteandersonsdesigns.com.au

OR

Lynette's Blog at
<http://www.lynetteandersonsdesigns.typepad.com/>

LECIEN

www.lecien.co.jp/en/hobby/

©2012 Lynette Anderson Designs

Forest Floor

Materials for Quilt



35030 - 10
1/2 yard



35030 - 110
1/4 yard



35031 - 90
1/4 yards



35031 - 10
1 1/8 yard



35031 - 31
1/4 yard



35032 - 71
1/3 yard



35032 - 10
1/8 yard



35032 - 32
1/4 yard



35032 - 90
1/3 yard



35034 - 10
1 1/2 yards



35033 - 110
1/4 yard



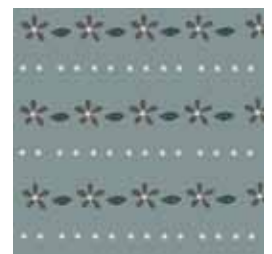
35033 - 10
1/8 yard



35033 - 30
1/4 yard



35035 - 10
1/8 yard



35035 - 90
1/8 yard



35035 - 31
1/4 yard



35036 - 10
2 1/2 yards



35036 - 31
1/3 yard



35036 - 90
1/3 yard



(Optional)
binding:
35030-71
5/8 yard

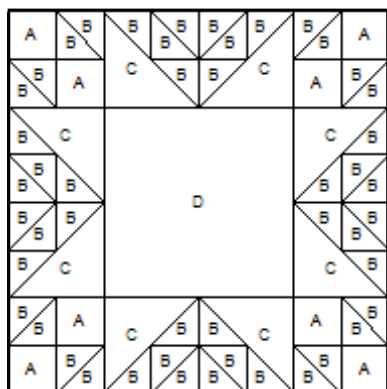
74" x 94" piece of backing (5 1/2 yards)

74" x 94" piece of batting

Matching threads and basic sewing supplies

Block Identification

Block A (18 blocks):



Block B (17 blocks):



Cutting Instructions

1. From 35030-10 cream fabric, cut for a. inner border #3

widthwise, 7 (2 1/2" x 42") strips. Piece strips together using diagonal seams. Subcut 2 (2 1/2" x 57 1/2") and 2 (2 1/2" x 73 1/2") strips

2. From 35030-110 purple fabric, cut for

a. Block A
widthwise, 2 (2 1/4" x 42") strips. Subcut 36 (2 1/4" x 2 1/4") squares

3. From 35031-10 cream fabric, cut for

a. Block A
widthwise, 3 (5 1/2" x 42") strips. Subcut 18 (5 1/2" x 5 1/2") squares

b. Block B
widthwise, 6 (3 1/2" x 42") strips. Subcut 68 (3 1/2" x 3 1/2") squares

4. From 35031-31 pink fabric, cut for

a. Block A
widthwise, 2 (3 1/2" x 42") strips. Subcut 16 (3 1/2" x 3 1/2") squares

5. From 35031-90 blue fabric, cut for

a. Block B
widthwise, 2 (3 1/2" x 42") strips. Subcut 24 (3 1/2" x 3 1/2") squares

6. From 35032-10 cream fabric, cut for

a. Block B
widthwise, 1 (3 1/2" x 42") strip. Subcut 10 (3 1/2" x 3 1/2") squares

7. From 35032-32 brown fabric, cut for

a. Block B
widthwise, 2 (3 1/2" x 42") strips. Subcut 16 (3 1/2" x 3 1/2") squares

8. From 35032-71 blue fabric, cut for

a. Block B
widthwise, 1 (3 1/2" x 42") strip. Subcut 4 (3 1/2" x 3 1/2") squares

b. Inner Border #4

widthwise, 7 (1" x 42") strips. Piece strips together using diagonal seams. Subcut 2 (1" x 58 1/2") and 2 (1" x 77 1/2") strips

9. From 35032-90 dark green, cut for

a. Block A
widthwise, 3 (3 3/8" x 42") strips. Subcut 36 3 3/8" x 3 3/8" squares. Cut once diagonally to yield a total of 72 "C" HST's.

10. From 35033-10 cream fabric, cut for

a. Block B
widthwise, 1 (3 1/2" x 42") strip. Subcut 12 (3 1/2" x 3 1/2") squares.

11. From 35033-30 pink fabric, cut for

a. Block A
widthwise, 2 (2 1/4" x 42") strips. Subcut 36 (2 1/4" x 2 1/4") squares

12. From 35033-110 purple fabric, cut for

a. Block A
widthwise, 2 (2 1/4" x 42") strips. Subcut 36 (2 1/4" x 2 1/4") squares

13. From 35034-10 cream fabric, cut for

a. Outer border
widthwise, 8 (5 1/2" x 42") strips. Piece strips using diagonal seams. Subcut 2 (5 1/2" x 68 1/2") and 2 (5 1/2" x 78 1/2") strips

14. From 35035-10 cream fabric, cut for

a. Block B
widthwise, 1 (3 1/2" x 42") strip. Subcut 12 (3 1/2" x 3 1/2") squares

15. From 35035-31 pink fabric, cut for

a. Block A
widthwise, 2 (2 1/4" x 42") strips. Subcut 36 (2 1/4" x 2 1/4") squares

16. From 35035-90 blue fabric, cut for

a. Block B
widthwise, 1 (3 1/2" x 42") strip. Subcut 8 (3 1/2" x 3 1/2") squares

17. 1. From 35036-10 cream, cut for

a. Block A
widthwise, 6 (1 3/4" x 42") strips. Subcut 144 (1 3/4" x

1 3/4") squares
widthwise, 8 (2 1/4" x 42") strips. Subcut 144 (2 1/4" x 2 1/4") squares
widthwise, 8 (2 1/8" x 42") strips. Subcut 144 (2 1/8" x 2 1/8") squares. Cut diagonally once to yield 288 "B" HST's.

b. Block B

widthwise, 9 (3 1/2" x 42") strips. Subcut 102 (3 1/2" x 3 1/2") squares.

c. Inner border #1

widthwise, 7 (1" x 42") strips. Piece strips together using diagonal seams. Subcut 2 (1" x 51 1/2") and 2 (1" x 70 1/2") strips

18. From brown buttercup spray fabric (35036-31), cut for

a. Inner border #2

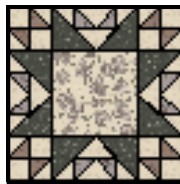
widthwise, 7 (1 1/2" x 42") strips. Piece strips together using diagonal seams. Subcut 2 (1 1/2" x 53 1/2") and 2 (1 1/2" x 71 1/2") strips

19. From dark blue buttercup spray fabric (35036-90), cut for

a. Block A

widthwise, 3 (3 3/8" x 42") strips. Subcut 36 (3 3/8" x 3 3/8") squares. Cut squares diagonally once to yield 72 "C" HST's

Block Construction (for Block A):



1. Draw a diagonal line on the wrong side of 1 (2 1/4" x 2 1/4") cream buttercup spray square. Lay it, right sides together, on 1 (2 1/4" x 2 1/4") brown dragonfly garden square. Sew 1/4" right and left sides and away from the drawn line. Cut along drawn line. Open and press to yield 2 HST units. The units will need to be trimmed to measure 1 3/4" x 1 3/4".



Repeat to make a total of 8 units.

2. Sew 2 HST units made in step 1 and 2 (1 3/4" x 1 3/4") cream buttercup spray squares together to form



a 4-patch unit as shown in the diagram.

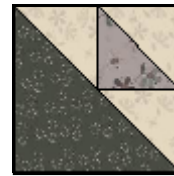
Repeat to make a total of 4 units (A1).

3. Draw a diagonal line on the wrong side of 1 (2 1/4" x 2 1/4") cream buttercup spray square. Lay it, right sides together, on 1 (2 1/4" x 2 1/4") purple the woods square. Sew 1/4" right and left sides and away from the drawn line. Cut along drawn line. Open and press to yield 2 HST units. The units will need to be trimmed to measure 1 3/4" x 1 3/4".



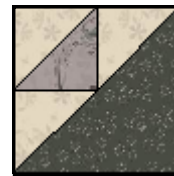
Repeat to make a total of 8 units.

4. Sew 1 HST unit made in step 3, 2 cream buttercup spray "B" triangles, and 1 black faded flowers "C" triangle together according to the diagram.

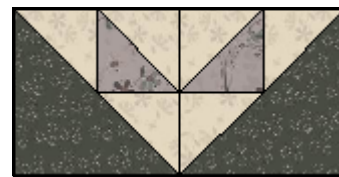


Repeat to make a total of 4 units (A2).

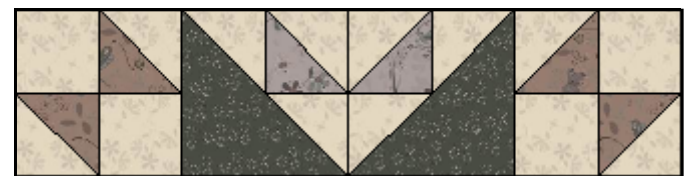
5. Refer to the diagram, and make a total of 4 reverse units of A2 (A2r).



6. Sew 1 A2 and 1 A2r together as shown (A3).



7. Arrange and sew together 1 A3 and 2 A1 units as shown (A4).

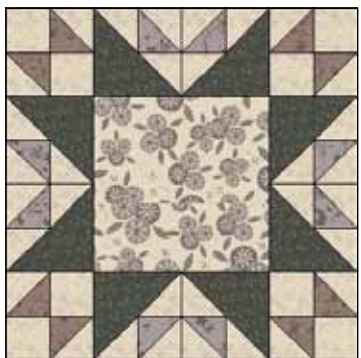


Repeat to make a total of 2 units.

8. Arrange and sew together 2 A2 units and 1 5 1/2" x 5 1/2" cream evening primrose square (A5).



9. Arrange and sew together 2 A4 units and 1 A5 unit to complete 1 block.



Repeat to make a total of 9 blocks.

10. Follow the same procedure and refer to the following diagram to make a total of 9 blocks, substituting dark blue buttercup spray for black faded flowers, brown daisy chain for brown dragonfly garden, and purple dragonfly garden for purple the woods.



Block Construction (for Block B) - using blue 35031-90 block as example:



1. Draw a diagonal line on the wrong side of 1 (3 1/2" x 3 1/2") 35036-10 cream fabric. Lay it, right sides together, on 1 (3 1/2" x 3 1/2") 35031-10 cream fabric. Sew 1/4" right and left sides and away from the drawn line. Cut along drawn line. Open and press to yield 2 HST units. The units will need to be trimmed to measure 3" x 3".

line. Cut along drawn line. Open and press to yield 2 HST units. The units will need to be trimmed to measure 3" x 3".



Repeat to make a total of 8 HST units (B1).

2. Draw a diagonal line on the wrong side of 1 (3 1/2" x 3 1/2") 35036-10 cream square. Lay it, right sides together, on 1 (3 1/2" x 3 1/2") 35031-90 blue square. Sew 1/4" right and left sides and away from the drawn line. Cut along drawn line. Open and press to yield 2 HST units. The units will need to be trimmed to measure 3" x 3".



Repeat to make a total of 4 HST units (B2).

3. Draw a diagonal line on the wrong side of 1 (3 1/2" x 3 1/2") cream dragonfly garden square. Lay it, right sides together, on 1 (3 1/2" x 3 1/2") 35031-90 blue square. Sew 1/4" right and left sides and away from the drawn line. Cut along drawn line. Open and press to yield 2 HST units. The units will need to be trimmed to measure 3" x 3".



Repeat to make a total of 4 HST units (B3).

4. Arrange and sew the HST units into rows according to the diagrams.

Row 1: B1-B2-B1-B1



Row 2: B1-B3-B3-B2



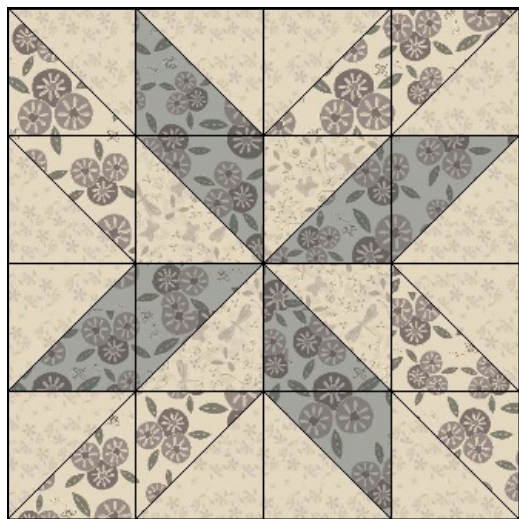
Row 3: B2-B3-B3-B1



Row 4: B1-B1-B2-B1



5. Sew rows together to complete 1 block.

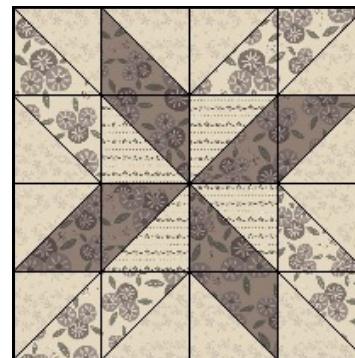


6. Repeat to make a total number of blocks in the following colorway, using the appropriate fabrics for each colorway:

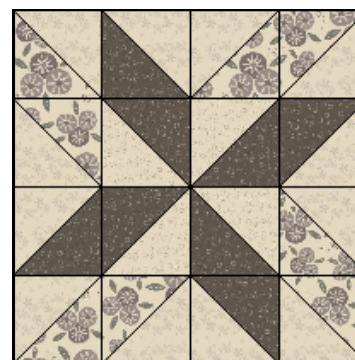
i. 6 35031-90 blue/35033-10 cream fabric



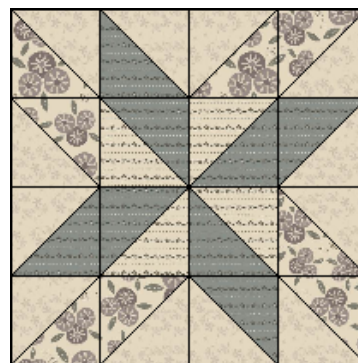
ii. 4 35031-31 pink/35035-10 cream



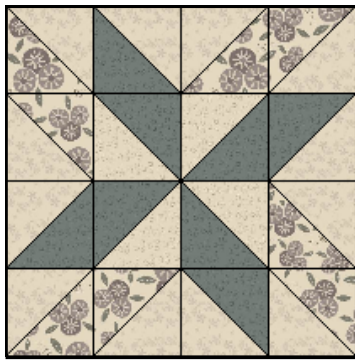
iii. 4 35032-32 brown/35032-10 cream



iv. 2 35035-90 blue/35035-10 cream

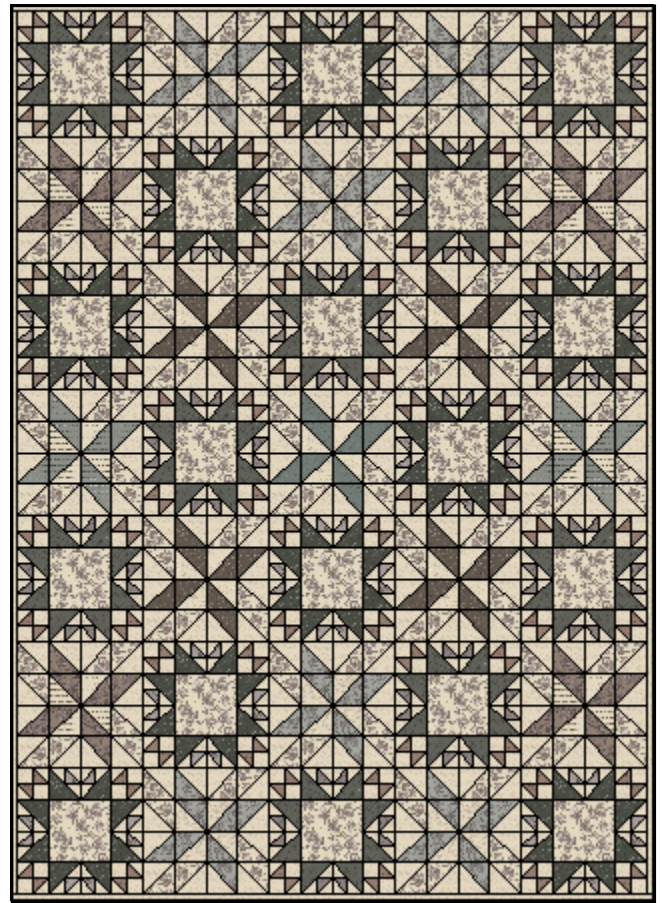
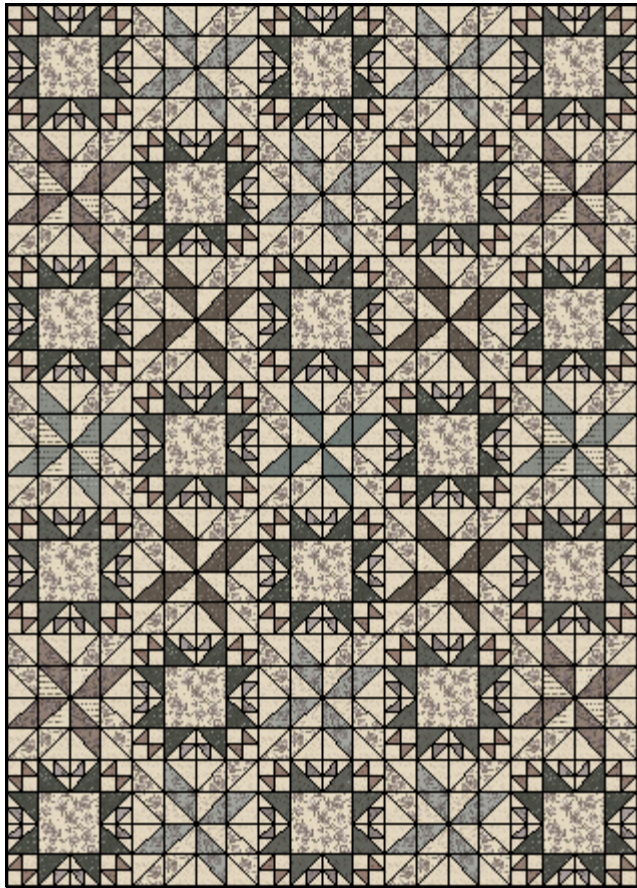


v. 1 35032-71 blue/35032-10 cream

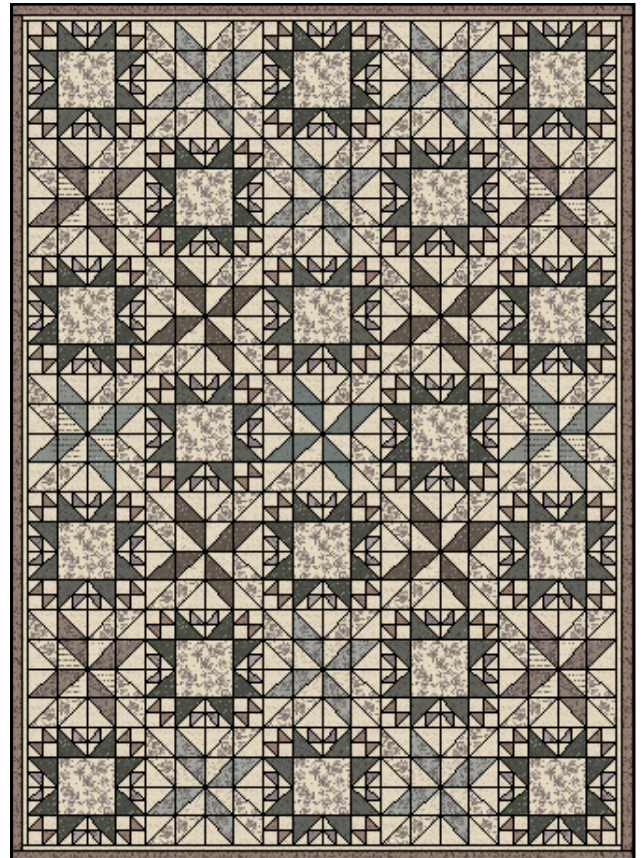


Quilt Center Assembly:

1. Refer to the quilt center diagram, arrange and sew together the blocks to complete quilt center.



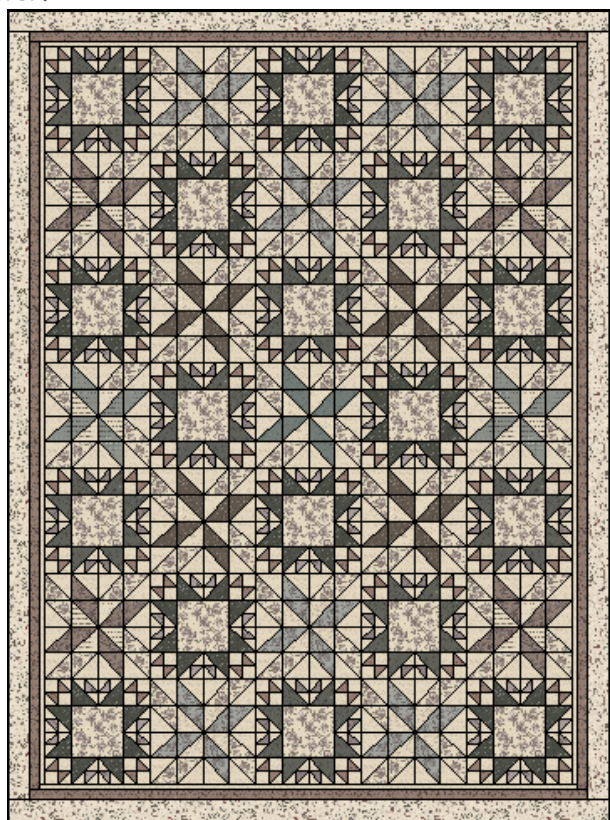
2. Inner Border #2. Sew 2 (1 1/2" x 71 1/2") brown buttercup spray strips onto the opposite long sides of quilt center. Sew 2 (1 1/2" x 53 1/2") brown buttercup spray strips onto the remaining opposite short sides of quilt center.



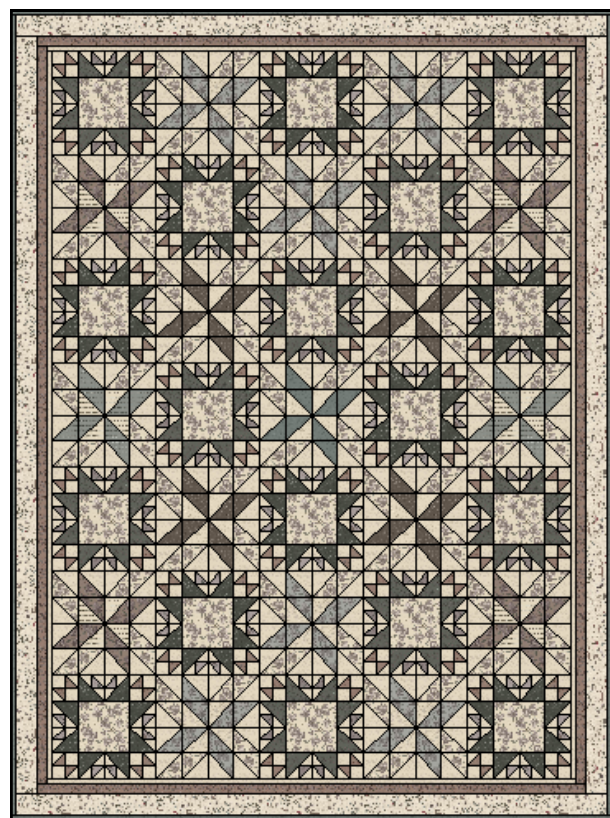
Quilt Top Assembly:

1. Inner Border #1. Sew 2 (1" x 70 1/2") cream buttercup spray strips onto the opposite long sides of quilt center. Sew 2 (1" x 51 1/2") cream buttercup spray strips onto the remaining opposite short sides of quilt center.

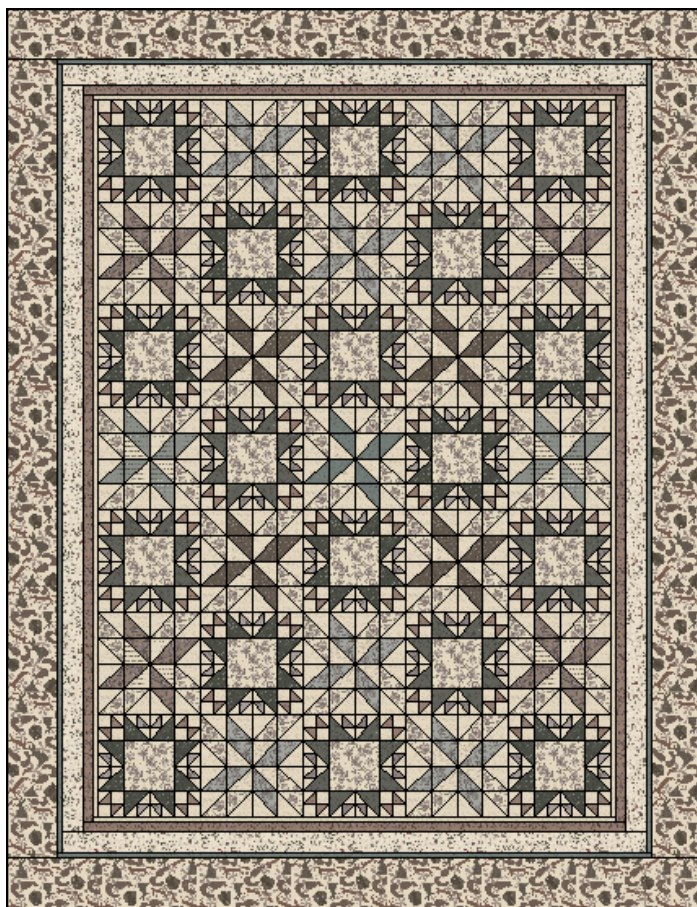
3. Inner Border #3. Sew 2 (2 1/2" x 73 1/2") cream the woods strips onto the long opposite sides of quilt center. Sew 2 (2 1/2" x 57 1/2") cream the woods strips onto the remaining opposite short sides of quilt center.



4. Inner Border #4. Sew 2 (1" x 77 1/2") blue faded flowers strips onto the opposite long sides of quilt center. Sew 2 (1" x 58 1/2") blue faded flowers strips onto the remaining opposite short sides of quilt center.



5. Outer Border. Sew 2 (5 1/2" x 78 1/2") cream forest friends strips onto the opposite long sides of quilt center. Sew 2 (5 1/2" x 68 1/2") cream forest friends strips onto the remaining opposite short sides of quilt center to complete quilt top.



Quilting Instructions:

1. With the backing fabric laying taut, place batting and then quilt top to form quilt sandwich. Baste quilt sandwich.
2. Quilt as desired.
3. Square up quilt before binding strip, hanging sleeve and label.
4. Bind the finished quilt.