

Santa's Sleigh

A Free Pattern Featuring Fabrics by

Lynette Anderson Designs



Quilt Design and Instructions by: Cate Tallman-Evans



Sample Made by Kay Harmon/Quilted by Darlene Szabo

Finished Quilt Size: 61" x 61"

To view more from Lynette Anderson Designs, please visit
www.lynetteandersondesigns.com.au

OR

Lynette's Blog at
<http://www.lynetteandersondesigns.typepad.com/>

LECIEN

www.lecien.co.jp/en/hobby/

LECIEN U.S.A., Inc.

www.lecienusa.com
info@lecienusa.com

©2011 Lynette Anderson Designs

Santa's Sleigh

Materials for the Quilt



30434-10
2 fat quarters



30434-30
2 fat quarters



30434-80
1 fat quarter



30435-30
1 fat quarter



30435-31
1 fat quarter + $\frac{3}{4}$ yard



30435-60
1 fat quarter + $\frac{5}{8}$ yard



30435-80
1 fat quarter + $\frac{3}{8}$ yard



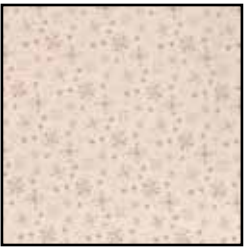
30436-10
1 fat quarter



30436-11
1 fat quarter



30436-60
1 fat quarter



30437-10
1 fat quarter



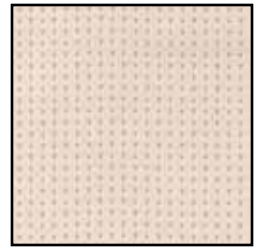
30437-30
1 fat quarter



30437-31
1 fat quarter



30437-60
1 fat quarter + $\frac{3}{8}$ yard



30438-10
1 fat quarter



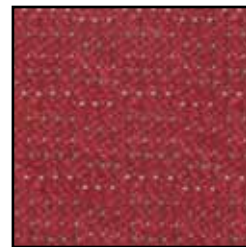
30438-30
1 fat quarter



30438-31
1 fat quarter



30438-60
1 fat quarter



30439-30
1 fat quarter



30439-60
1 fat quarter



30439-80
1 fat quarter + $\frac{3}{8}$ yard



30440-10
1 fat quarter



30440-30
1 fat quarter



30440-60
1 fat quarter



30440-80
1 fat quarter + $\frac{3}{8}$ yard

Santa's Sleigh

Page 1

Additional Materials

Template plastic

All supplies necessary for your chosen method of appliqué

Thread to match appliques

Scrap of black solid fabric

Black embroidery floss

Usual sewing and rotary cutting supplies

4 yards of fabric for quilt backing

Cutting Instructions

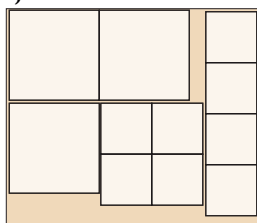
Note: All strips are cut across the width of the fabric from selvage edge to selvage edge.

From EACH of the (4) cream fabrics, cut:

(3) 7 1/2" x 7 1/2" and (8)

4 1/4" x 4 1/4" squares.

Refer to the layout to the right for cutting the correct number of squares from each fat quarter.



From EACH of the (3) dark brown fat quarters, cut:

(5) 2" strips for the outer border.

(1) 4 1/4" x 21" strip. Recut into (4) 4 1/4" x 4 1/4" squares.

From the 3/8 yard cuts of EACH of the (3) dark brown fabrics, cut:

(2) 4 1/4" strips. Recut into (18) 4 1/4" x 4 1/4" squares.

From EACH of the (4) green and red medallions fat quarters, cut:

(3) 4" strips. Recut into (4) 4" x 4" squares to yield a total of (24) squares of each fabric.

From the bright red dots fat quarter, cut:

(6) 2 1/4" strips. Recut into (48) 2 1/4" x 2 1/4" squares.

(1) 2" strip for the outer border.

From EACH of the (4) remaining bright red fat quarters, cut:

(4) 2" strips for the outer border.

From EACH of the remaining (3) dark red fat quarters, cut:

(2) 2 1/4" strips. Recut into (16) 2 1/4" x 2 1/4" squares.

From the dark green fat quarter, cut:

(7) 2 1/4" strips for the binding.

From the 5/8 yard cut of the dark green fabric, cut:

(4) 3" strips for the inner border. Trim (2) strips to 35 1/2" and (2) strips to 30 1/2".

(3) 2 1/4" strips for the binding.

From EACH of the (5) green fat quarters, cut:

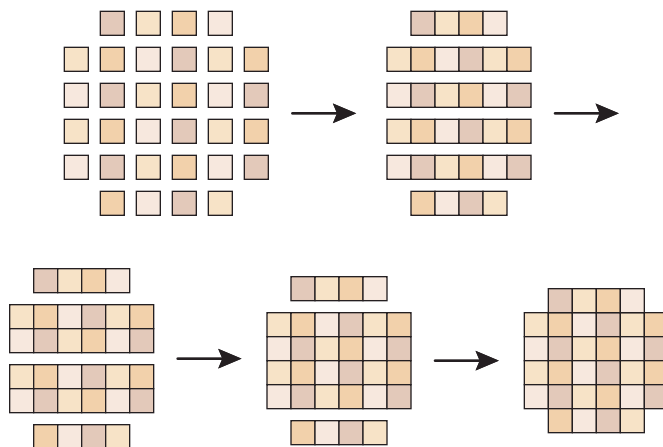
(7) 2" strips for the outer border.

Please reserve all remaining fabric for appliques.

Sewing Instructions

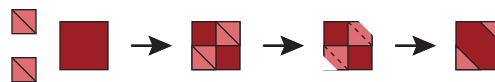
Note: All seams are sewn using 1/4" seam allowance with right sides held together and raw edges even. Please refer to the quilt pictured on the cover for specific fabric placement.

1. Arrange (24) 4 1/4" cream squares into (4) rows with (6) squares in each row. Stitch the squares into rows and sew the rows together. Stitch (4) cream squares together to make a row. Repeat to make a second (4) square unit. Stitch the shorter rows to the top and bottom of the assembled cream squares unit matching center points.

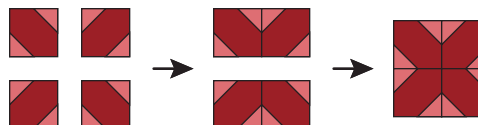


2. Repeating the procedure from step 1, arrange (64) 4 1/4" dark brown squares into (8) rows with (8) squares in each row. Stitch the squares into rows and sew the rows together to make a 30 1/2" x 30 1/2" pieced unit.

3. Draw diagonal lines on the wrong sides of (2) 2 1/4" bright red dots squares. Layer the marked squares in opposite corners of a 4" red medallions square, right sides together. Sew on the marked lines. Trim 1/4" beyond the seam lines and press the resulting bright red triangles out.



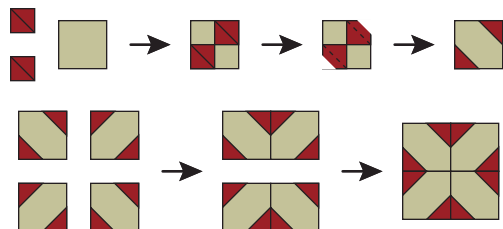
4. Repeat the procedure described in step 3 to make a total of (4) red medallions squares. Stitch these squares together as shown, noting orientation. Repeat to make a total of (6) 7 1/2" x 7 1/2" red medallions blocks.



Santa's Sleigh

Page 2

5. Repeat steps 3 and 4 to make (2) green medallions and dark red hearts blocks, (2) green medallions and dark red snowflakes blocks, and (2) green medallions and dark red gingerbread men blocks.



Appliqué

1. Using template plastic and the paper patterns provided, make templates for each motif. Please note that the paper patterns are full size, are not reversed and do not include seam allowances.

2. Using the templates, make the number of motifs listed on each template from the fabric listed on the template or the fabrics of your choice. Prepare all the motifs as necessary for your chosen method of appliqué.

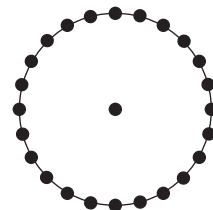
3. Using the quilt pictured on the cover as a guide, arrange the sleigh motif on top of the pieced cream background unit made in step 1 of the previous section. Layer the mittens, cuffs, toy bag, large gift and trim, small gift, tree trunk, three tree sections, tree top, and sleigh runner around the sleigh as shown. Please note that some motifs are partially tucked under the sleigh; the mittens and cuffs are layered on top of the sleigh. Overcast all raw edges.

4. Using the quilt pictured on the cover as a guide, layer a small heart on top of each gingerbread man motif. Overcast the raw edges of the hearts using your favorite method. Center each gingerbread man motif on top of a green snowflake circle motif and overcast the raw edges of both gingerbread men.

5. Layer a bright red medium heart on top of a dark red large heart. Overcast the raw edges of the medium heart. Center the hearts on top of a 7½" cream background square. Overcast the raw edges of the larger heart motif. Repeat this procedure to make a total of (8) bright red medium and dark red large heart units and (4) dark red medium and bright red large heart units.

Quilt Assembly

1. Using a ruler and a large sheet of paper or several sheets of paper taped together, make a paper pattern for a 21½" wide circle. Mark a center point, then mark points 10½" from the center as shown. Connect the dots to complete the circle, then cut out the pattern. Center the circle pattern on the sleigh appliqué unit and trim the appliqué unit to size. Stay stitch 1/8" in from the outer edge around the trimmed appliqué circle unit.



2. From the ¾ yard cut of bright red gingerbread print, cut enough bias strips to yield (2) bias units 36" long with a finished width of 1½". Prepare the bias units using your favorite method.

3. Center the sleigh appliqué unit on top of the pieced dark brown background. Pin the bias strips made in step 2 and the gingerbread men units on top of the sleigh unit. Appliqué the bright red bias units to the sleigh unit and dark brown background using the method of your choice. Overcast the raw edges of the gingerbread men backgrounds to complete the quilt center.

4. Stitch 3" x 30½" dark green strips to the left and right sides of the quilt top. Sew 3" x 35½" dark green strips to the top and bottom.

5. Using the quilt pictured on the cover as a guide, stitch together (3) appliqué heart blocks, (1) red medallions block, and (1) green medallions block. Stitch this unit to the left side of the quilt top. Repeat to add a pieced border to the right-hand side of the quilt top.

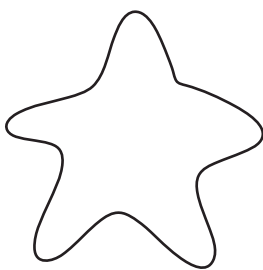
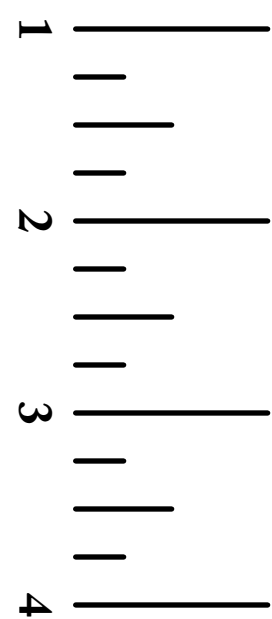
6. Stitch together (3) appliqué heart blocks, (2) red medallions blocks, and (2) green medallions blocks. Stitch this unit to the top of the quilt top. Repeat to add a pieced border to the bottom of the quilt top.

7. Trim the assorted 2" strips cut for the outer border to a variety of lengths. Stitch these lengths together end to end to make a long 2" strip. From this long strip, cut a 52" length. Sew this border strip to the top edge of the quilt top. Trim the ends of the border strip even with the side edges of the quilt top. Cut a 54" length from the long 2" strip. Sew this border unit to the right-hand side of the quilt top. Trim the edges of the border strip even with the top and bottom edges of the quilt top. In the same manner and working clockwise, continue adding border units to the quilt top until each side of the quilt has four rows of border strips added.

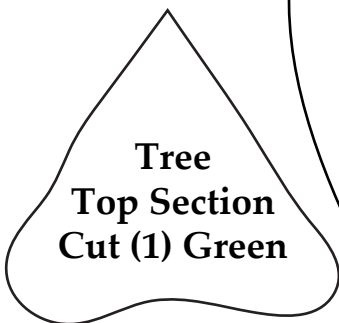
8. Layer the completed quilt top with batting and backing and quilt as desired.

9. Trim the batting and backing even with the outer edges of the quilt top and binding using the 2¼" dark green strips.

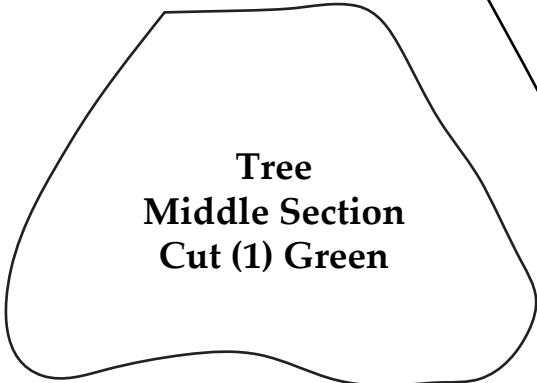
Templates are full size, are not reversed, and do not include seam allowance. Be sure “do not scale” button is selected during printing.



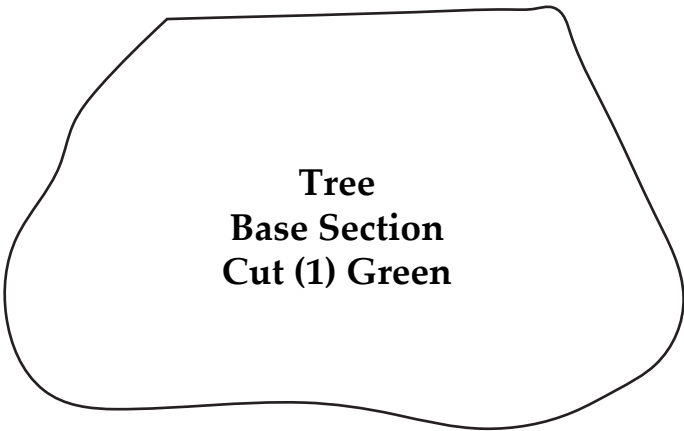
Tree Top
Star
Cut (1)
Bright Red



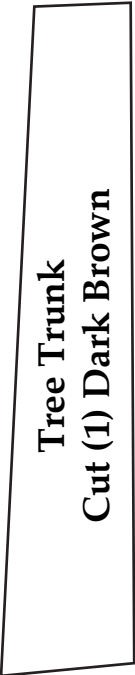
Tree
Top Section
Cut (1) Green



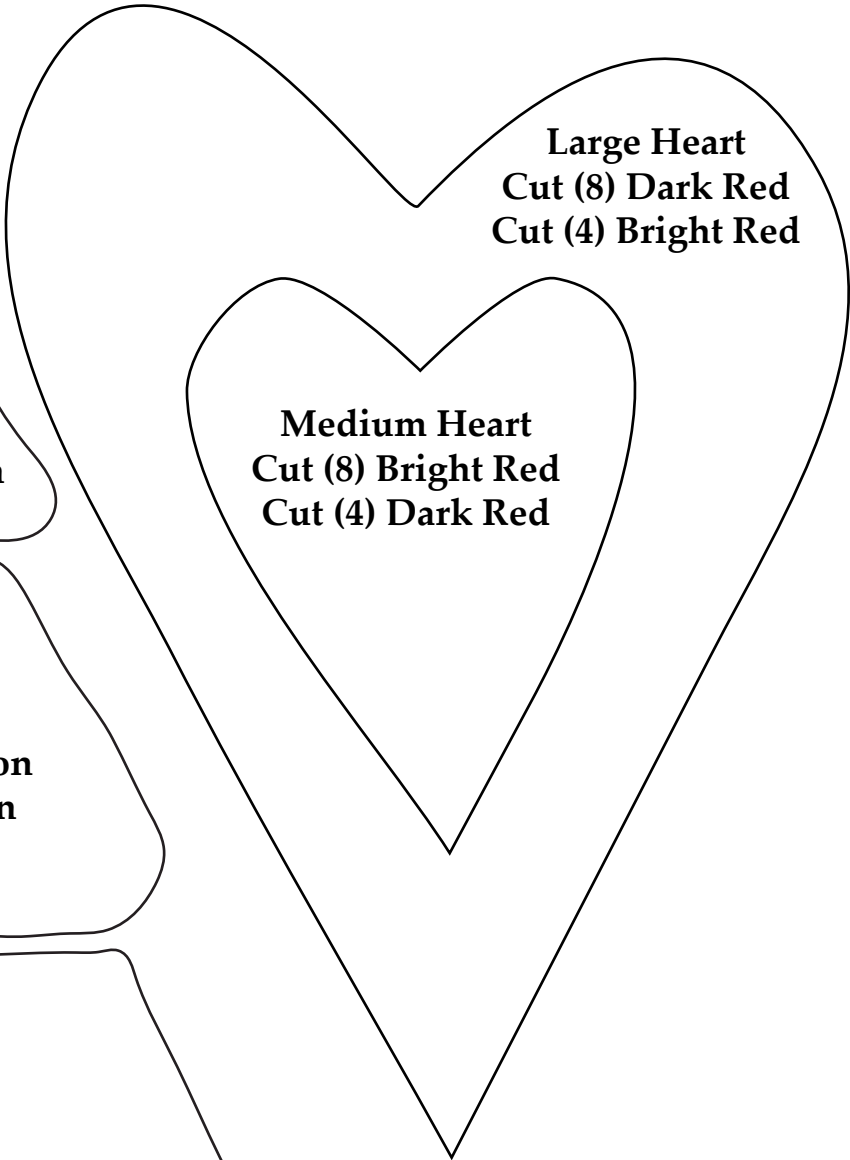
Tree
Middle Section
Cut (1) Green



Tree
Base Section
Cut (1) Green

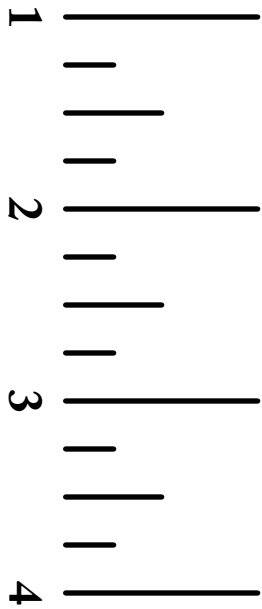


Tree Trunk
Cut (1) Dark Brown



Large Heart
Cut (8) Dark Red
Cut (4) Bright Red

Medium Heart
Cut (8) Bright Red
Cut (4) Dark Red



**Gingerbread Man
Background
Cut (2)
Green Snowflake
Print**

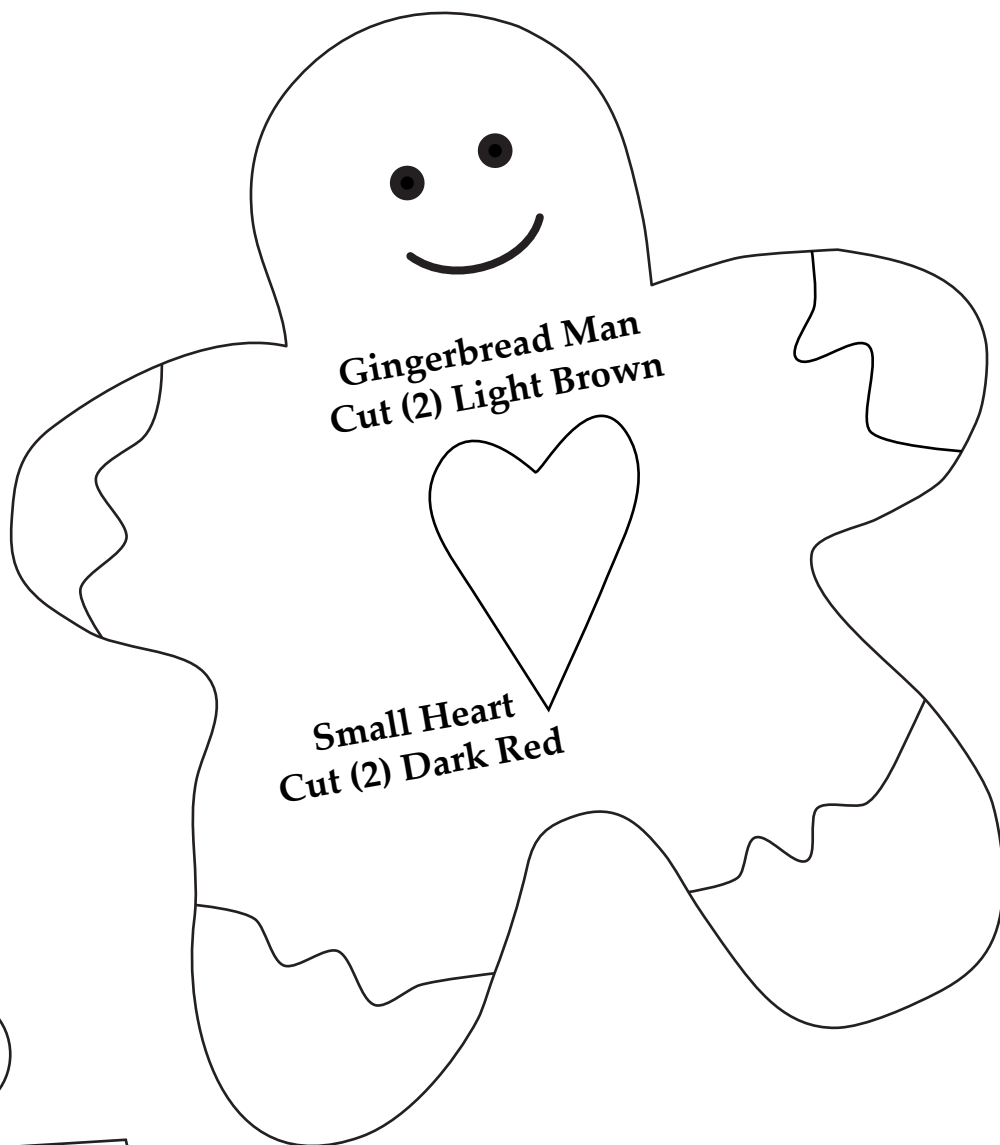
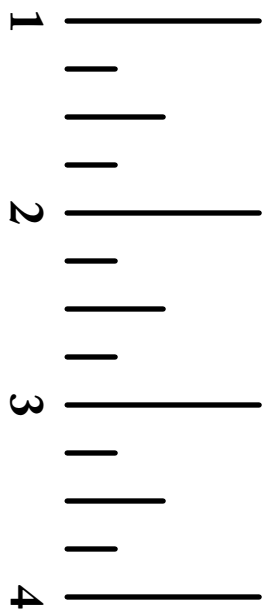
Place on Fold to Make Full Circle

Templates are full size, are not reversed, and do not include seam allowance. Be sure “do not scale” button is selected during printing.

Santa's Sleigh

Page 5

Templates are full size, are not reversed, and do not include seam allowance. Be sure "do not scale" button is selected during printing.

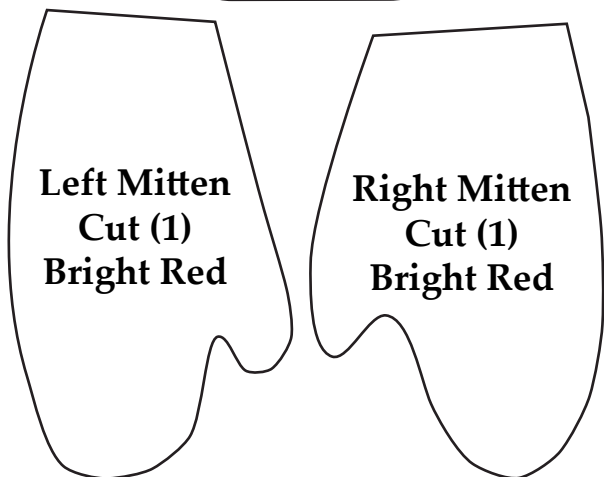


Mitten Cuff
Cut (2)
Green



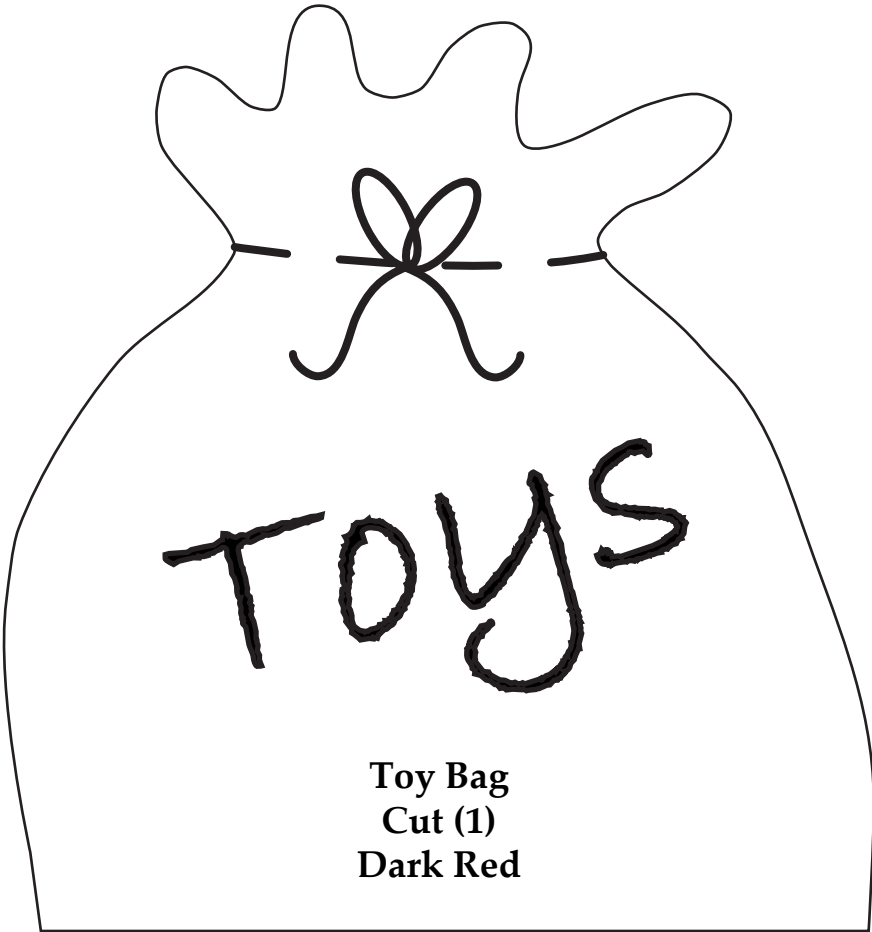
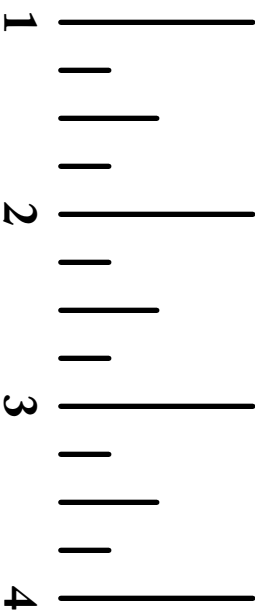
Left Mitten
Cut (1)
Bright Red

Right Mitten
Cut (1)
Bright Red

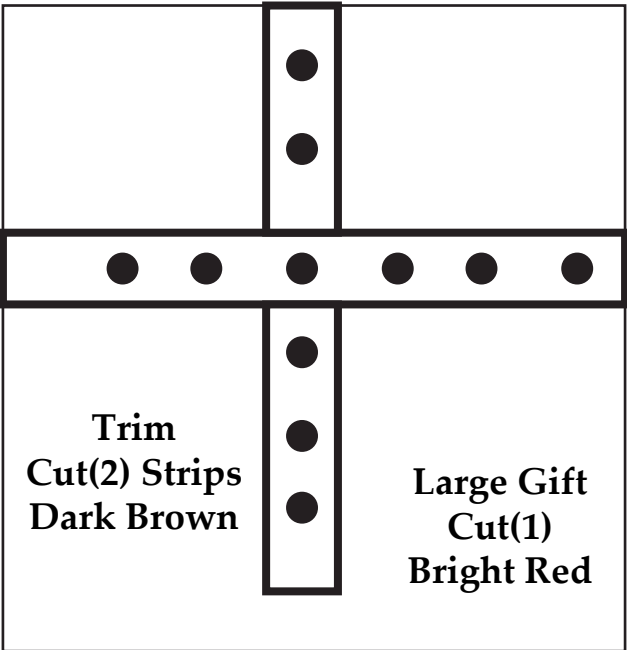


Santa's Sleigh

Templates are full size, are not reversed, and do not include seam allowance. Be sure “do not scale” button is selected during printing.



Toy Bag
Cut (1)
Dark Red

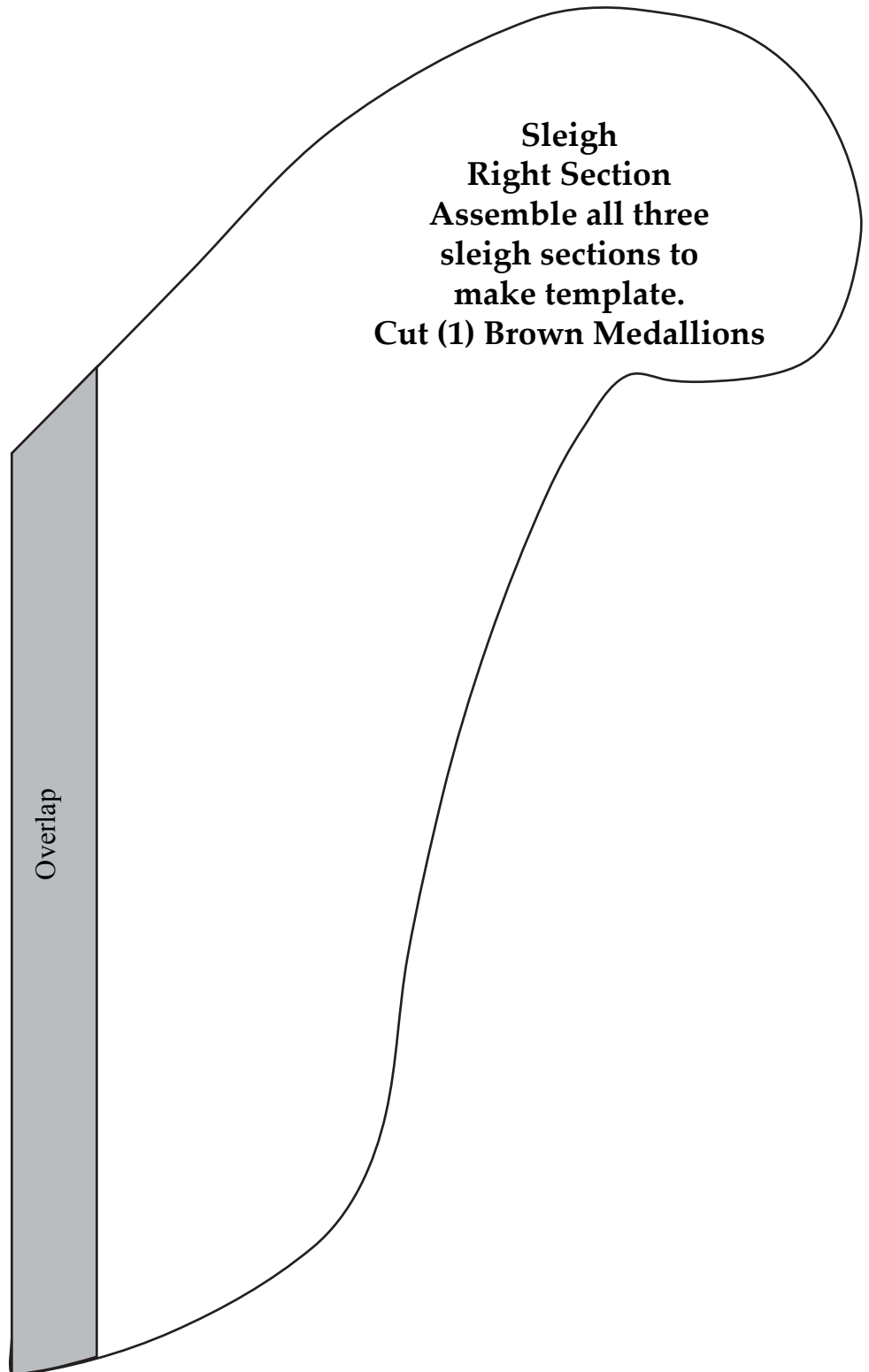
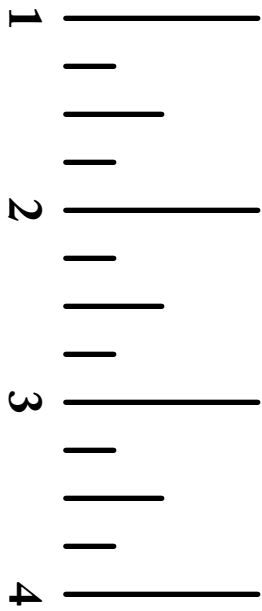


Small Gift
Cut (1)
Dark Red

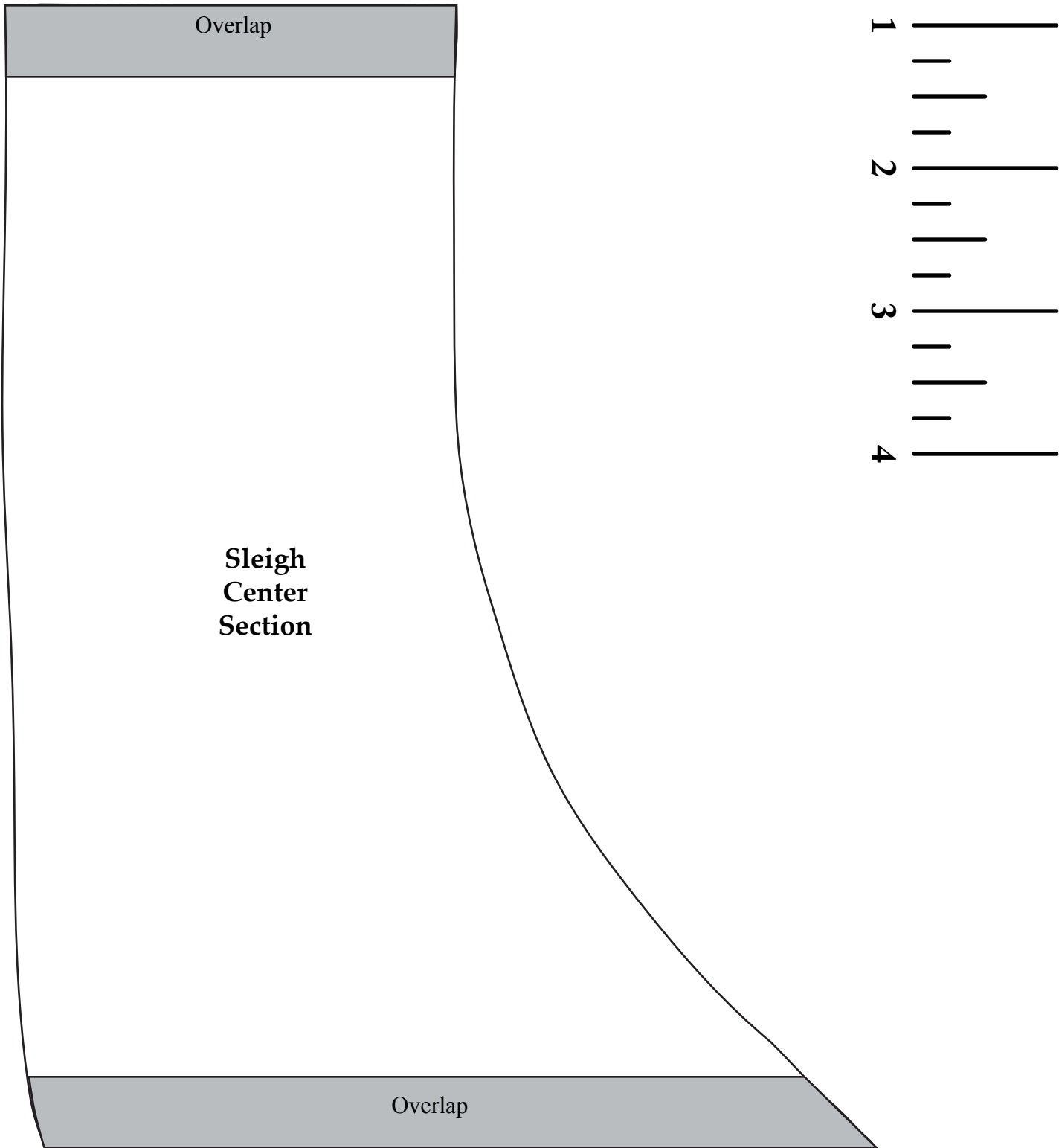
Santa's Sleigh

Page 7

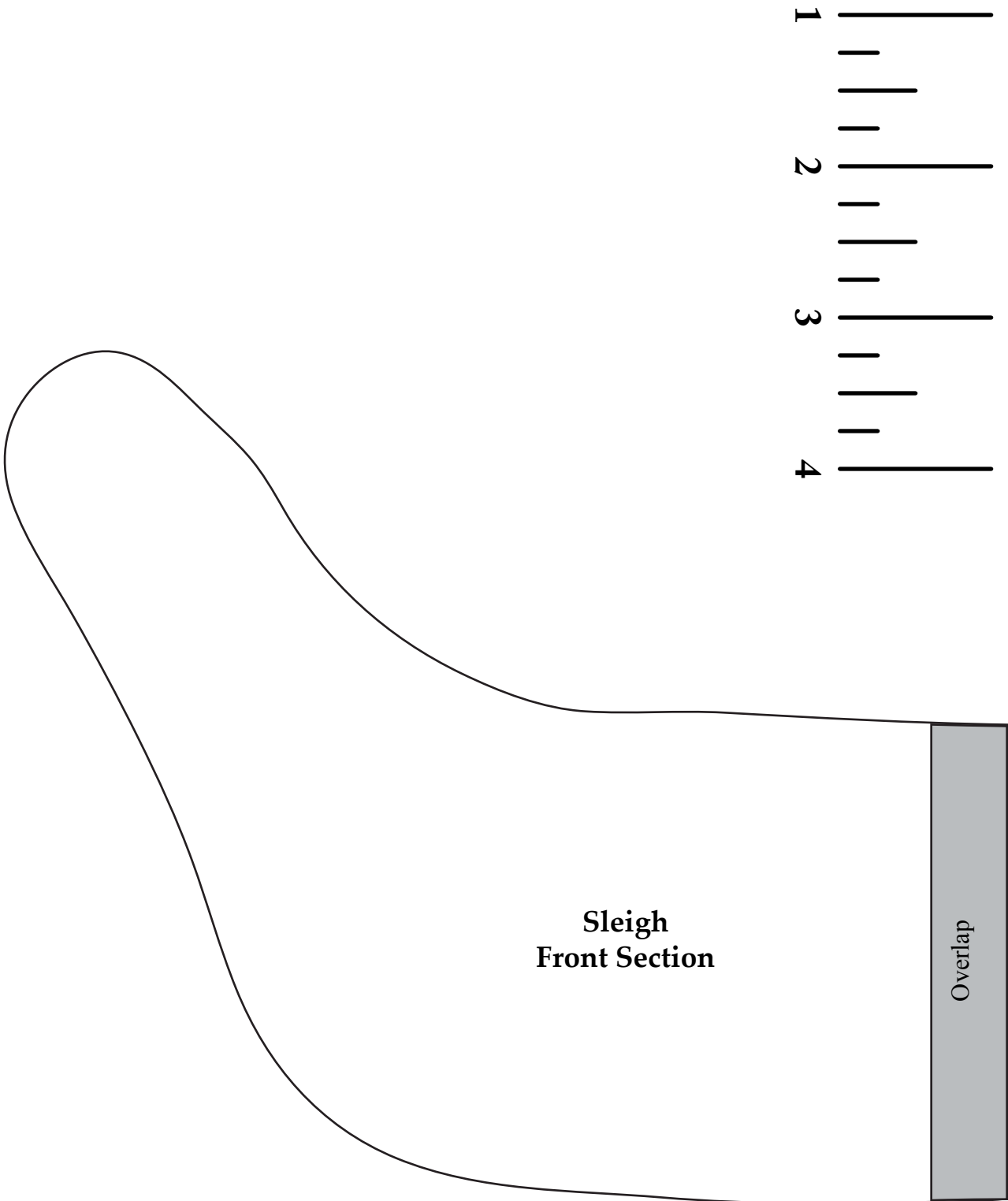
Templates are full size, are not reversed, and do not include seam allowance. Be sure “do not scale” button is selected during printing.



Templates are full size, are not reversed, and do not include seam allowance. Be sure “do not scale” button is selected during printing.



Templates are full size, are not reversed, and do not include seam allowance. Be sure “do not scale” button is selected during printing.



Santa's Sleigh

Page 10

Templates are full size, are not reversed, and do not include seam allowance. Be sure “do not scale” button is selected during printing.

**Sleigh Runner
Front Section**

**Sleigh Runner
Rear Section**

