

Wonky Webs

A Free Pattern featuring fabrics by

Lynette Anderson Designs



Quilt Design and Instructions by: Cate Tallman-Evans



Sample Made by Kay Harmon/Quilted by Darlene Szabo

Finished Quilt Size: 64" x 64"

To view more from Lynette Anderson Designs, please visit
www.lynetteandersondesigns.com.au

OR

Lynette's Blog at

<http://www.lynetteandersondesigns.typepad.com/>

LECIEN

www.lecien.co.jp/en/hobby/

©2011 Lynette Anderson Designs

LECIEN U.S.A., Inc.

www.lecienusa.com
info@lecienusa.com

Wonky Webs

Materials for the Quilt



30480-60
Green Scenic
5/8 Yard



30480-100
Black Scenic
5/8 Yard



30480-110
Purple Scenic
5/8 Yard



30481-60
Green Lines
3/4 Yard



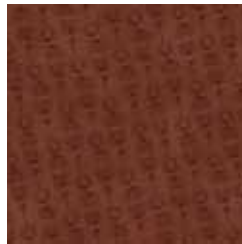
30481-80
Orange Lines
3/4 Yard



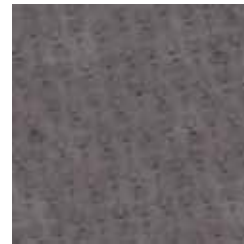
30481-100
Dark Grey Lines
1 Yard



30481-110
Purple Lines
5/8 Yard



30482-80
Orange Spiders
3/4 Yard



30482-90
Grey Spiders
5/8 Yard



30482-110
Purple Spiders
3/4 Yard



30483-80
Orange Stars
3/4 Yard



30483-90
Grey Stars
5/8 Yard



30483-110
Purple Stars
3/4 Yard



30484-80
Orange Tonal
3/4 Yard



30484-90
Light Green Tonal
2 3/4 Yards



30484-110
Dark Grey Tonal
5/8 Yard



30485-80
Orange Alphabets
1 1/2 Yards



30485-81
Red Alphabets
5/8 Yard



30485-110
Purple Alphabets
5/8 Yard



30480-110
Purple Scenic
4 1/8 Yards
(for quilt backing)

Additional Materials

Template plastic

All supplies for your chosen method of appliqué, note that appliqué templates do not include seam allowances and are not reversed.

Scrap of black fabric for birds' eyes and beaks

(9) yards of 1/8" wide black ribbon for vines and bird tails

Black embroidery floss

72" x 72" piece of batting

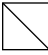
Usual sewing and rotary cutting supplies

Cutting Instructions

Note: All strips are cut across the width of the fabric from selvage edge to selvage edge.

From the light green, cut:

(5) 8 7/8" strips. Recut into (20) 8 7/8" x 8 7/8" squares.


Cut each square in half on *one* diagonal to yield a total of (40) triangles. 

(6) 7" strips for the base of the outer border.

(2) strips in assorted widths from 1 1/4" - 3 1/2".

From the light orange, cut:

(4) 8 7/8" strips. Recut into (16) 8 7/8" x 8 7/8" squares.

Cut each square in half on *one* diagonal to yield a total of (32) triangles. 

(2) strips in assorted widths from 1 1/4" - 3 1/2".

(2) 2 1/2" strips. Recut into (20) 2 1/2" x 2 1/2" squares for the pumpkin appliqués.

From the dark grey lines, cut:

(6) 2 1/2" strips for the inner border.

(4) strips in assorted widths from 1 1/4" - 3 1/2".

Reserve remaining fabric for appliqués.

From EACH of the remaining (4) orange fabrics cut:

(3) strips in assorted widths from 1 1/4" - 3 1/2".

(Please note: it is advised to start with these strips and then to cut additional strips as needed, once you have established a procedure for making the blocks.)

(2) 2 1/2" strips. Recut into (20) 2 1/2" x 2 1/2" squares for the pumpkin appliqués.

(1) 2 1/4" strip for the binding.

From EACH of the remaining (12) fabrics cut:

(3) strips in assorted widths from 1 1/4" - 3 1/2".

(Please note: it is advised to start with these strips and then to cut additional strips as needed, once you have established a procedure for making the blocks.)

(1) 2 1/4" strip for the binding.

Reserve the remaining yardage from the green lines, purple spiders, and purple stars for appliqués.

Sewing Instructions

Note: All seams are sewn using 1/4" seam allowance with right sides held together and raw edges even. Please refer to the quilt pictured on the cover for specific fabric placement.

Foundation Piecing

1. Copy and prepare (9) copies each of Foundations 1-8.

2. Layer a light orange triangle on top of a prepared foundation with the wrong side of the fabric next to the unprinted side of the foundation.

Make sure the fabric and paper triangles are even with each other along all three edges. Pin or baste the fabric and paper triangles together.

3. Using the cut strips from the assorted prints, stitch pieces to the foundation in the order indicated by the printed numbers. Trim the ends of each strip after it is added, extending the ends slightly beyond the edges of the paper foundation and fabric triangle. If you are not experienced with the technique of foundation piecing, please consult a book, website, or ask at your local quilt shop for additional help.

4. Repeat the procedure from step 3 to complete a total of (32) light orange triangles.

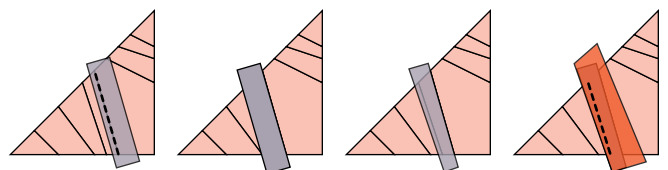
5. Using the light green triangles, repeat the foundation piecing procedure used for the light orange triangles, noting that only the smaller sections of piecing are done for these triangles. Depending upon the foundation used, the strips are added starting with section 5 or section 6.

Piecing Without Foundations

1. If desired, make templates for the unnumbered, center sections of Foundations 1-8.

2. Flip the Foundation 1 template upside down and lightly mark the side edges on the right side of a light orange triangle.

3. If using marked lines, layer a contrasting print strip on top of the light orange triangle, right sides together, making sure the cut strip extends at least 1/4" beyond the marked line as shown. If you



are using unmarked base triangles, simply layer a contrasting fabric strip on top of the triangle base.

Piecing Without Foundations (cont.)

3. (cont.) Stitch using 1/4" seam allowance. Trim the ends of the strip, making sure it extends beyond the edge of the paper foundation and fabric triangle. Trim the unsewn side of the strip so that it extends 1/4" beyond the line for the next section. Layer the next strip on top of the first, right sides together and raw edges even. Repeat the procedure used to add the first strip to the triangle base.

4. Continue adding strips to the triangle until both triangle corners are covered.

5. Trim the contrasting strips even with the outer edges of the light orange triangle.

6. Repeat this procedure to complete a total of (32) light orange triangle units.

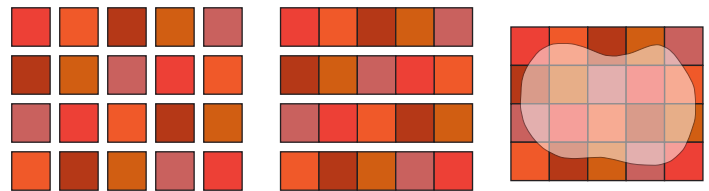
7. Repeat this procedure to complete a total of (40) light green triangle units making sure to add strips only to one corner of each triangle.

Block Assembly

1. Stitch (2) light green triangle units together, making sure that the pieced sections are together. Repeat to make a total of (20) light green squares. Repeat to make a total of (16) light orange squares.
2. Arrange (4) light green squares into (2) rows with (2) blocks in each row, again making sure that the print sections are positioned toward the outer corners of the block. Sew the blocks into rows and sew the rows together to make (1) light green spider web block. Repeat to make a total of (5) light green spider web blocks. Repeat this procedure to make a total of (4) light orange spider web blocks.

Appliqué

1. Using the paper patterns and template plastic, make templates for each motif.
2. Prepare the number of motifs listed on each paper pattern as required for your chosen method of appliqué. Please note that the templates are not reversed and do not have seam allowances. To make the pieced fabric for the pumpkin appliqués, arrange (20) 2 1/2" orange squares into (4) rows with (5) squares in each row as shown in the diagram at the top of the next column. Stitch the squares into rows and sew the rows together to make the pieced fabric. Repeat to make a total of (5) pieced fabric units. Cut (1) pumpkin motif from each unit.



Appliqué (cont.)

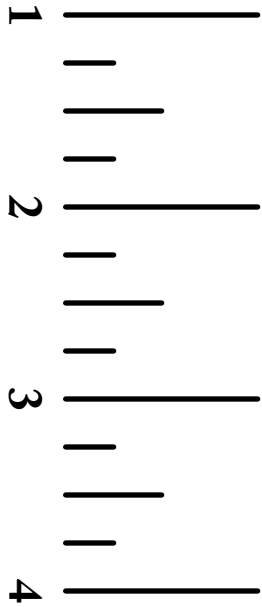
4. Using the quilt pictured on the cover as a guide to placement, appliqué the motifs to the light green spiderweb blocks using the method of your choice.

Quilt Assembly

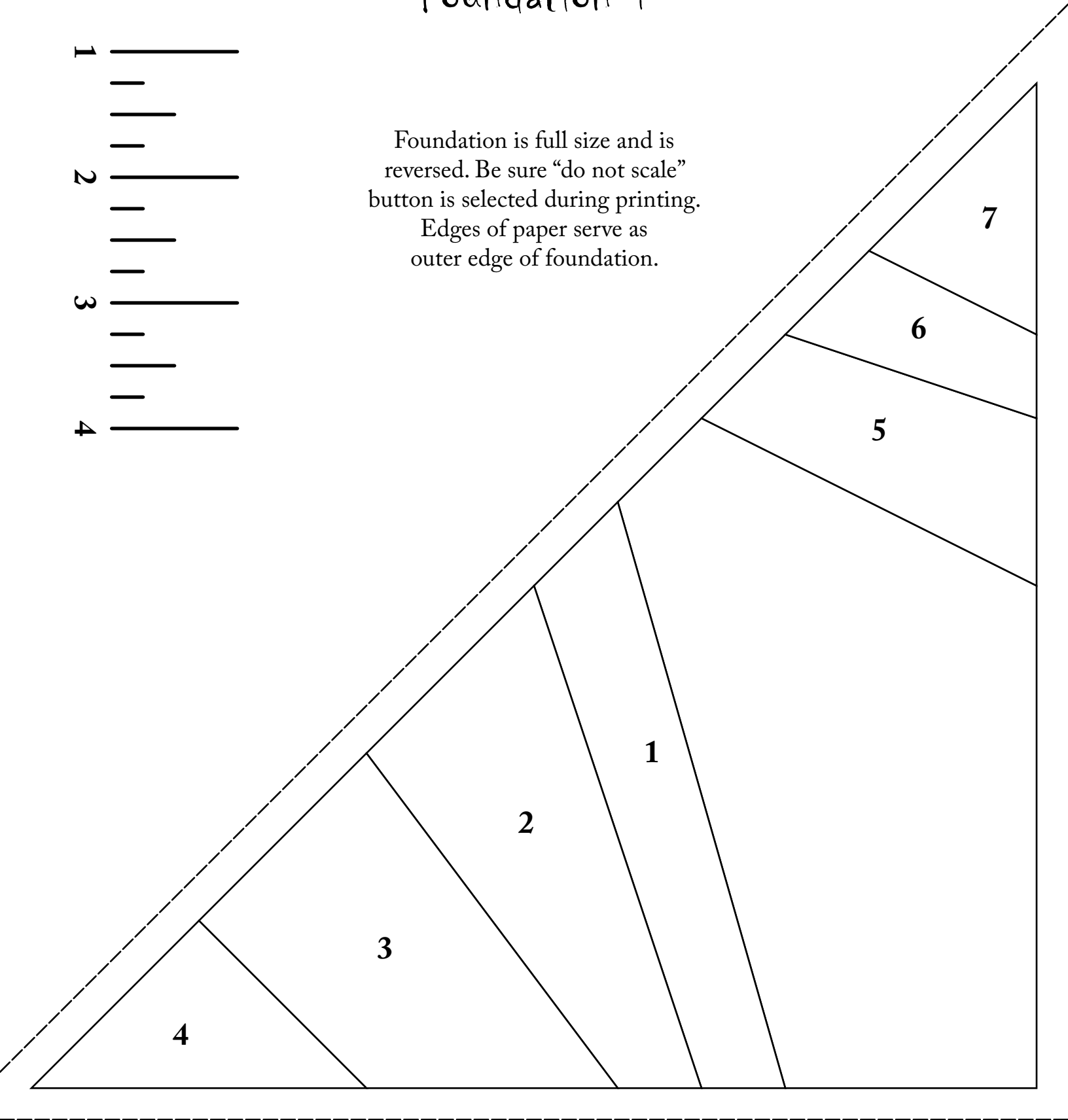
1. Arrange the light green and light orange spider web units into (3) rows with (3) units in each row, alternating the two types of units as shown in the quilt pictured on the cover. Stitch the units into rows and sew the rows together to complete the quilt center.
2. Trim the selvages from the 2 1/2" dark grey lines inner border strips. Sew the strips together end to end to make a long 2 1/2" strip. From this long strip, cut (2) 52 1/2" and (2) 48 1/2" lengths (*if your measurements are different, cut to fit your quilt top*). Sew the shorter lengths to the left and right sides of the quilt top. Sew the longer lengths to the top and bottom.
3. Trim the selvages from the 7" light green strips and sew the strips together end to end to make a long 7" strip. Repeating the procedure used when making the triangle units for the blocks, add contrasting strips to the light green base, angling the contrasting strips to replicate the look of the triangle units. Continue adding contrasting strips to the entire length of the 7" wide light green base strip.
4. From the prepared base strip, cut (2) 52 1/2" and (2) 64 1/2" lengths (*if your measurements are different, cut to fit your quilt top*). Trim each cut length to 6 1/2" wide. Sew the shorter lengths to the left and right sides of the quilt top. Sew the longer lengths to the top and bottom.
5. Layer the completed quilt top with batting and backing and quilt as desired.
6. Trim the finished quilt and bind using the 2 1/4" strips cut for the binding from the assorted prints.
7. Embellish the finished quilt by adding the ribbon vines and other details to the pumpkin and bird motifs.

Wonky Webs

Foundation 1

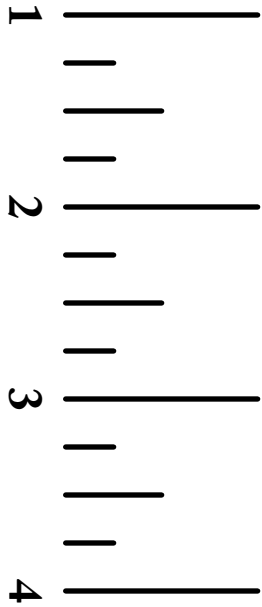


Foundation is full size and is reversed. Be sure “do not scale” button is selected during printing.
Edges of paper serve as outer edge of foundation.

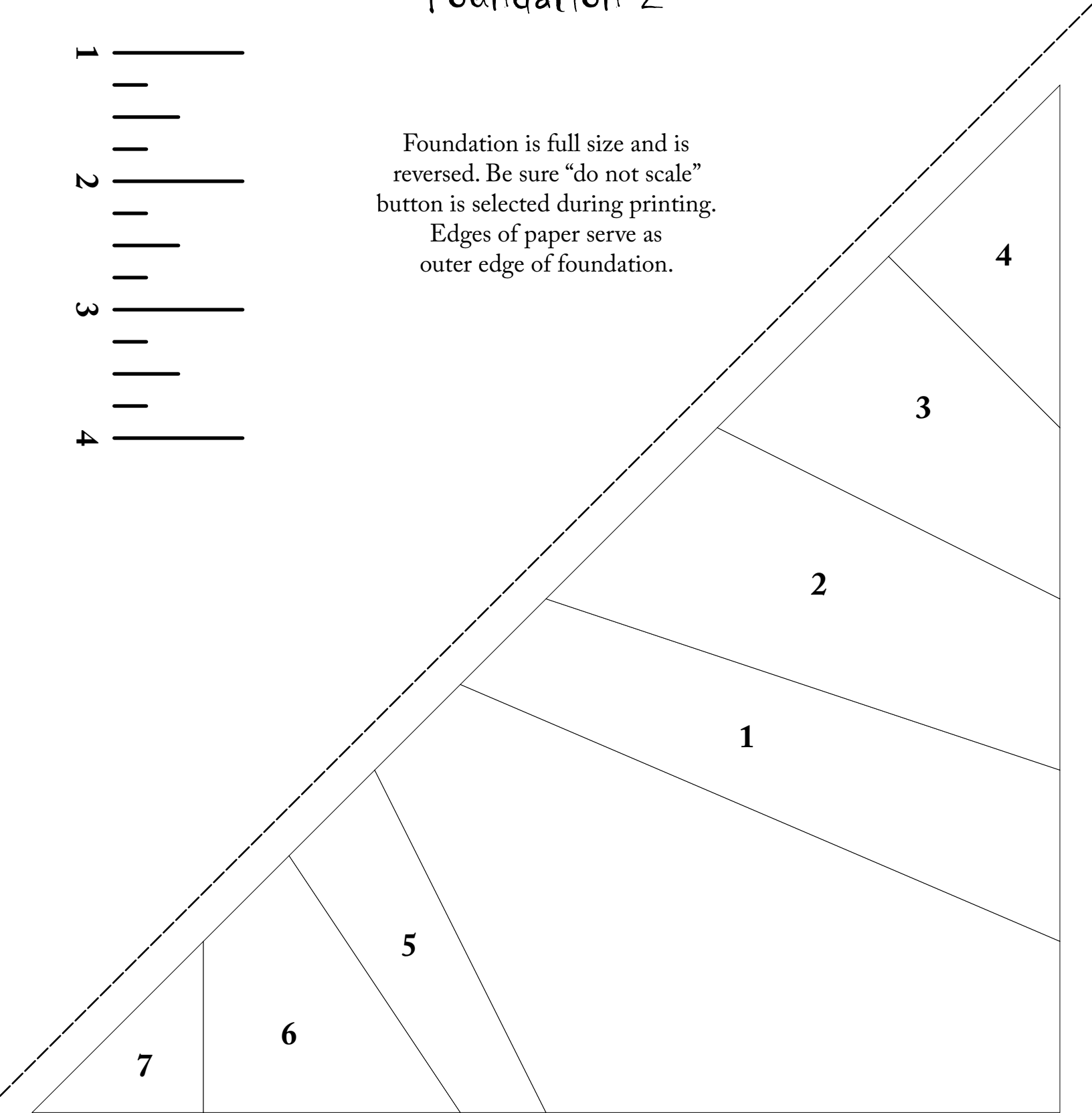


Wonky Webs

Foundation 2

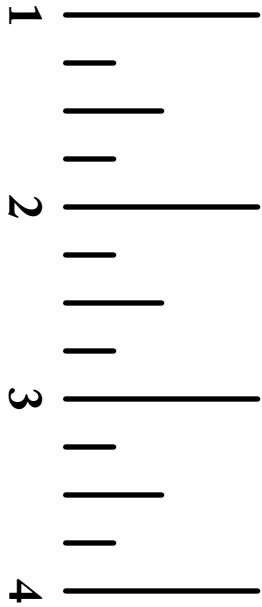


Foundation is full size and is reversed. Be sure "do not scale" button is selected during printing.
Edges of paper serve as outer edge of foundation.

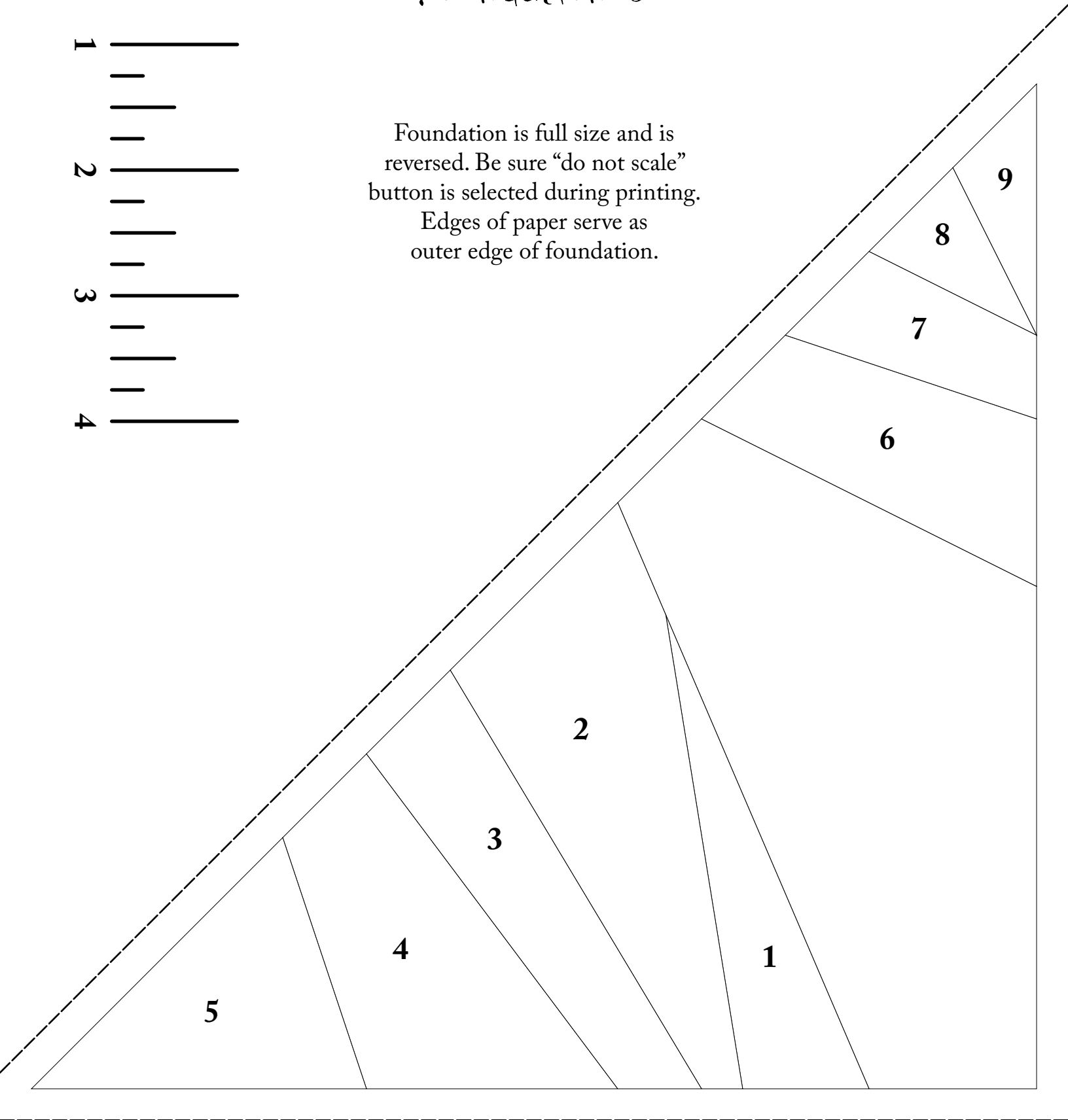


Wonky Webs

Foundation 3

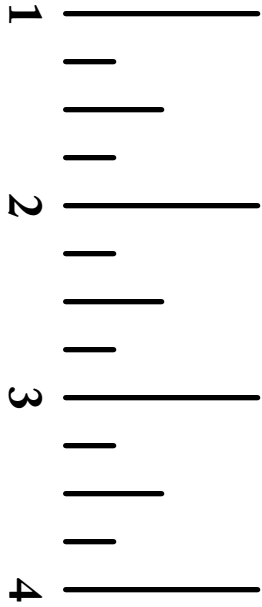


Foundation is full size and is reversed. Be sure "do not scale" button is selected during printing.
Edges of paper serve as outer edge of foundation.

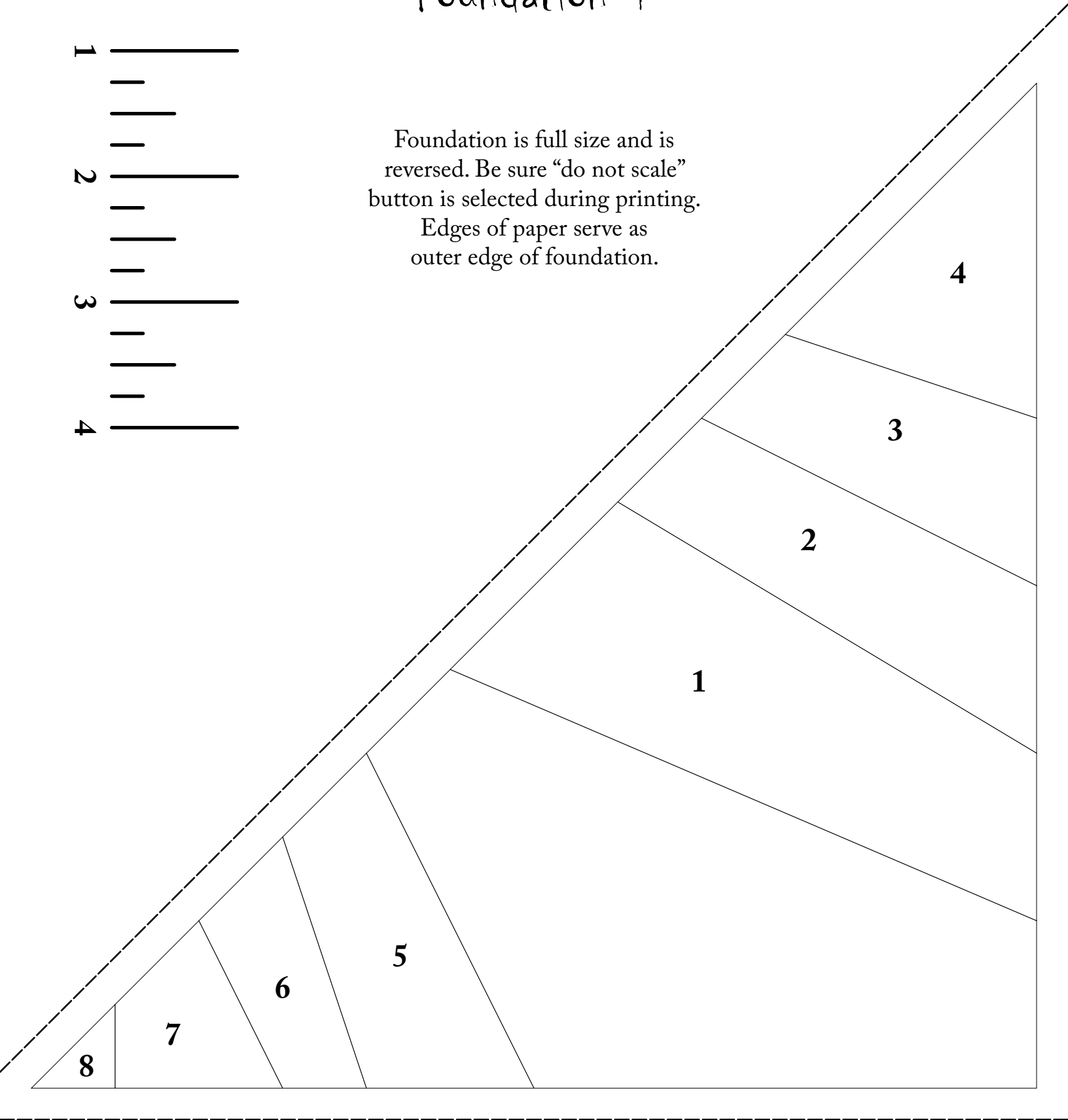


Wonky Webs

Foundation 4

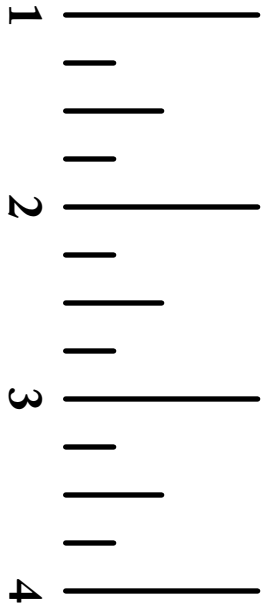


Foundation is full size and is reversed. Be sure “do not scale” button is selected during printing.
Edges of paper serve as outer edge of foundation.

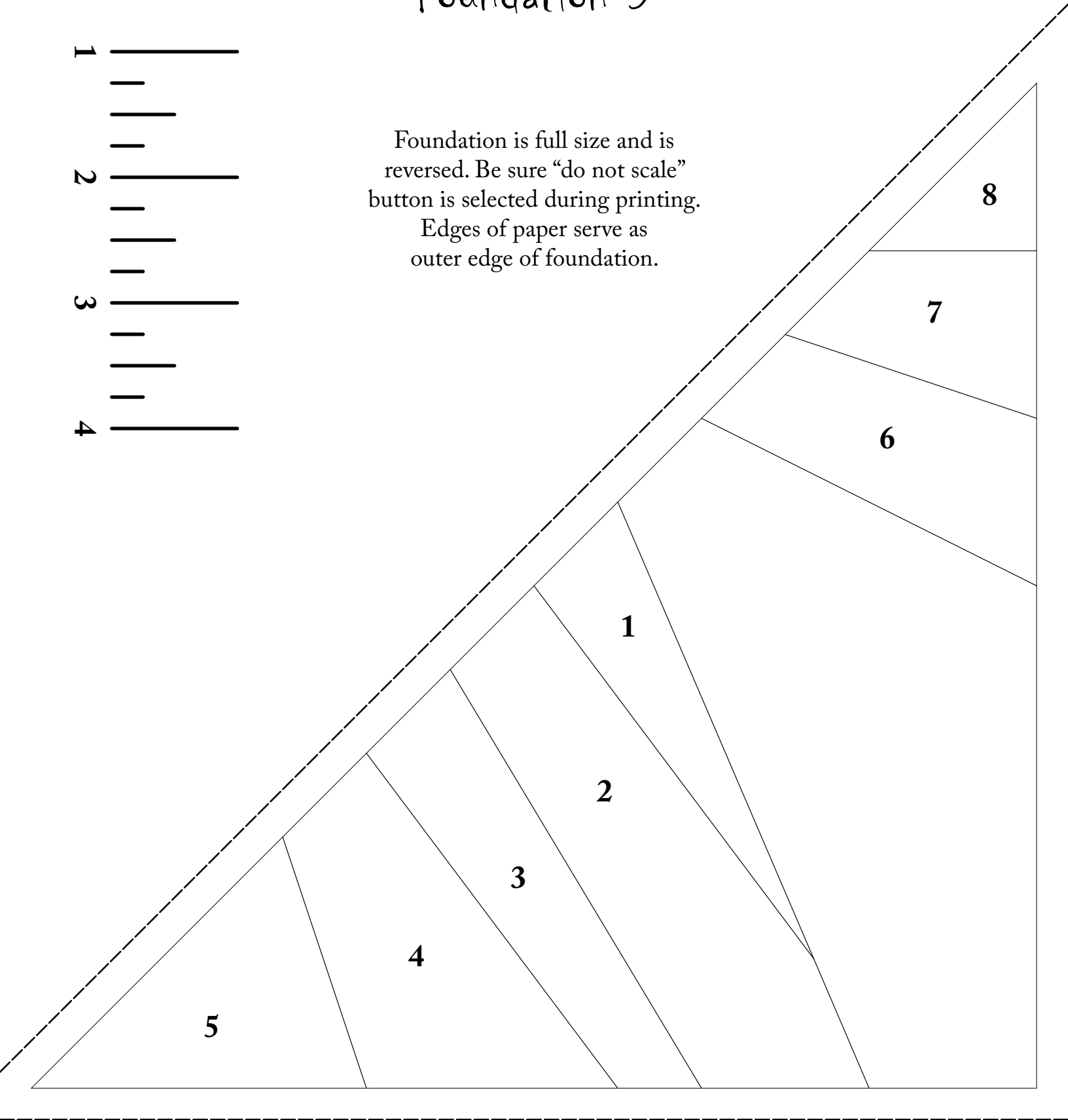


Wonky Webs

Foundation 5

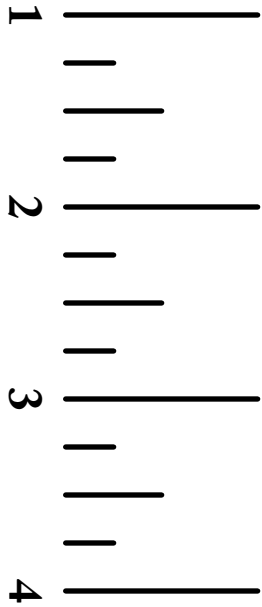


Foundation is full size and is reversed. Be sure “do not scale” button is selected during printing.
Edges of paper serve as outer edge of foundation.

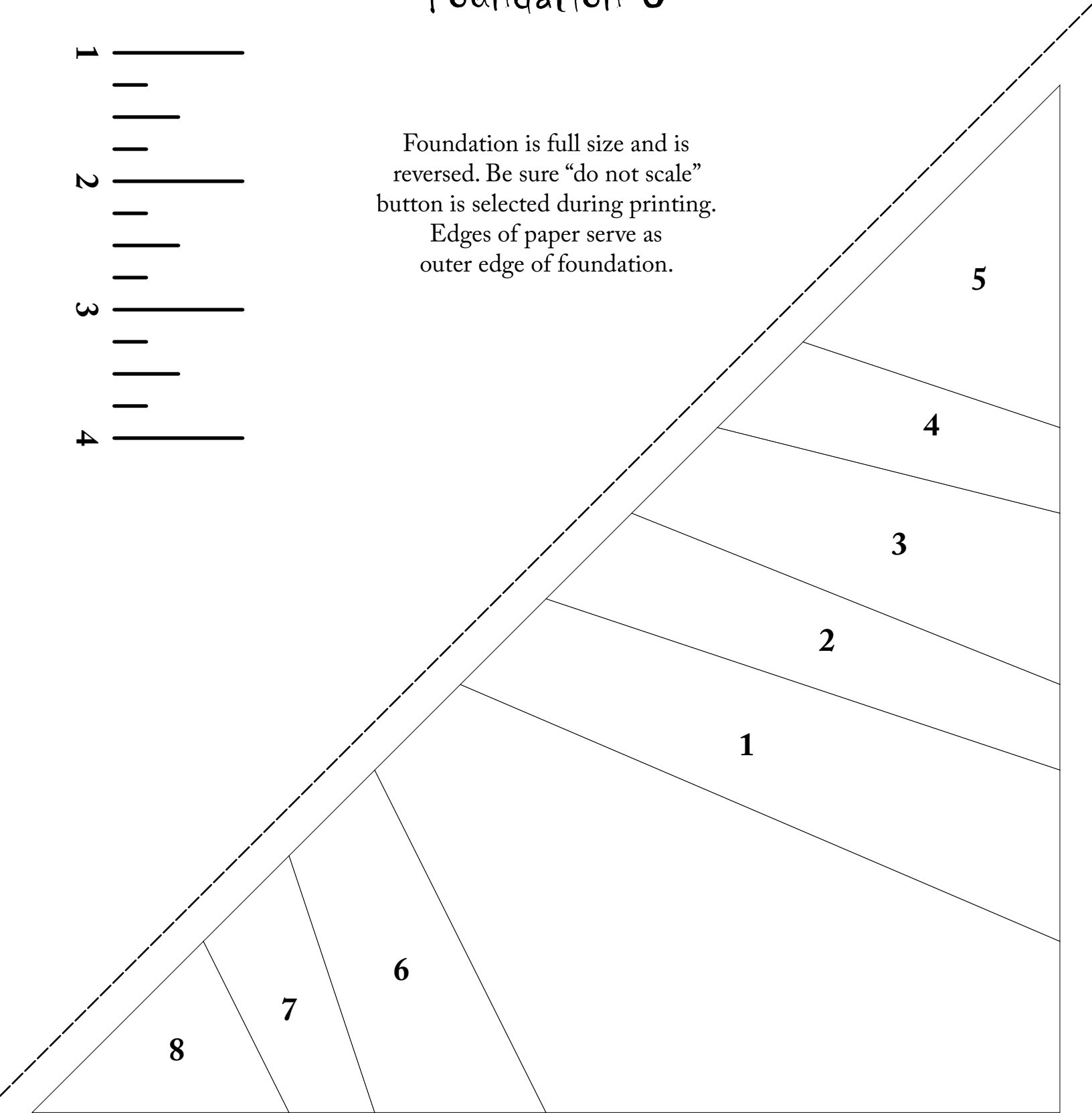


Wonky Webs

Foundation 6

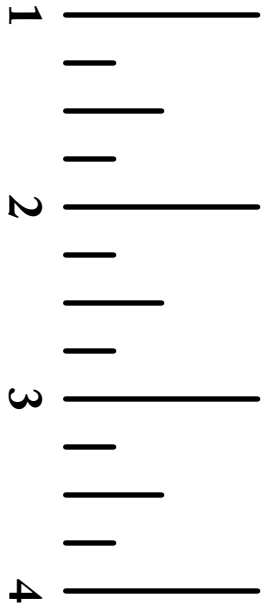


Foundation is full size and is reversed. Be sure "do not scale" button is selected during printing.
Edges of paper serve as outer edge of foundation.

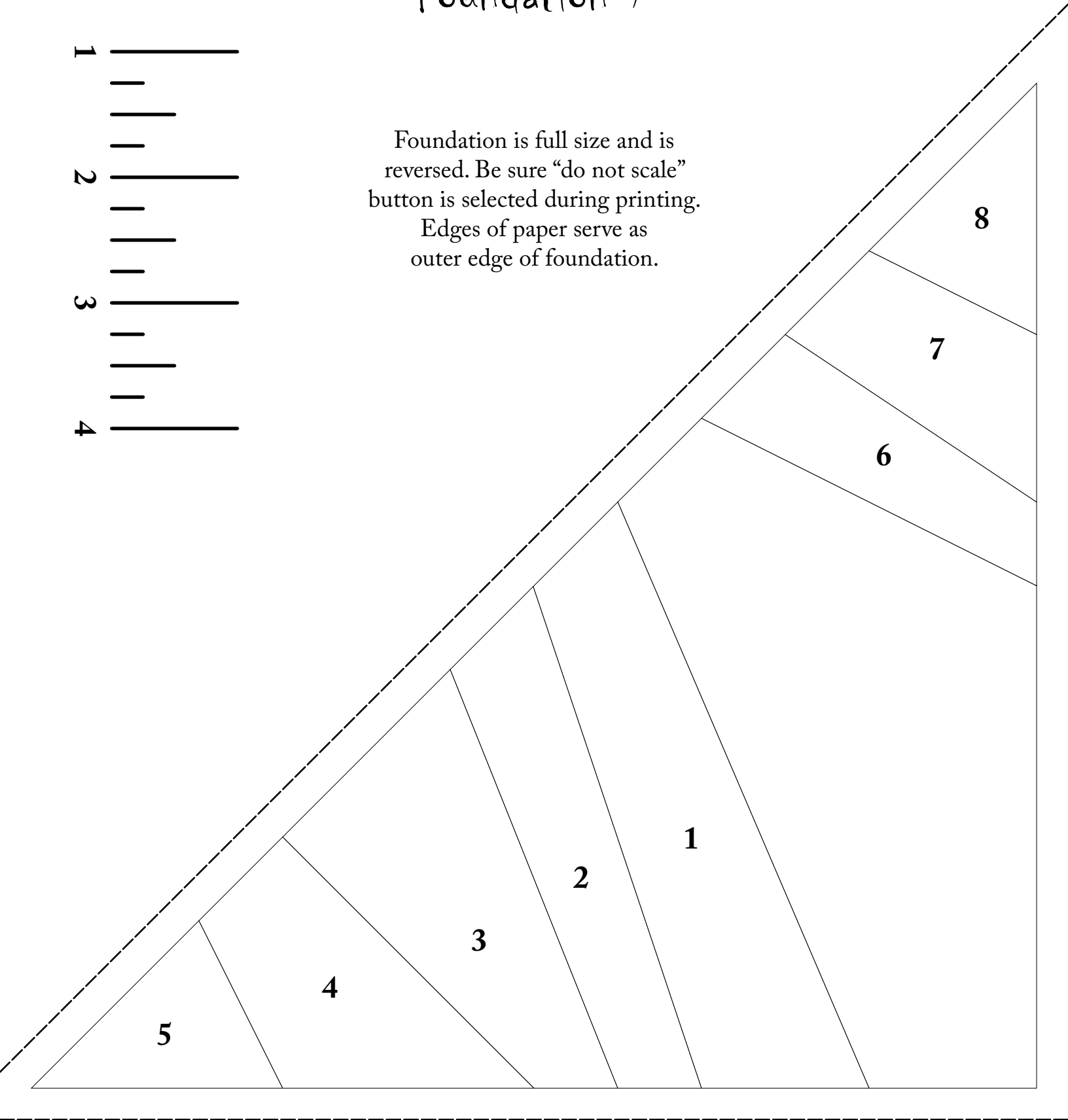


Wonky Webs

Foundation 7

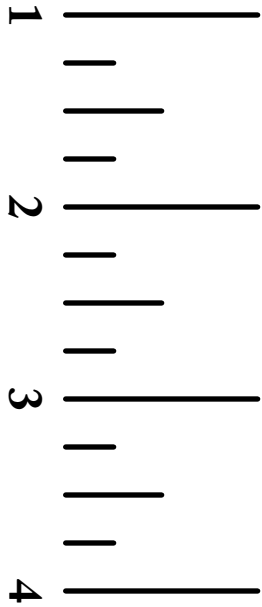


Foundation is full size and is reversed. Be sure "do not scale" button is selected during printing.
Edges of paper serve as outer edge of foundation.

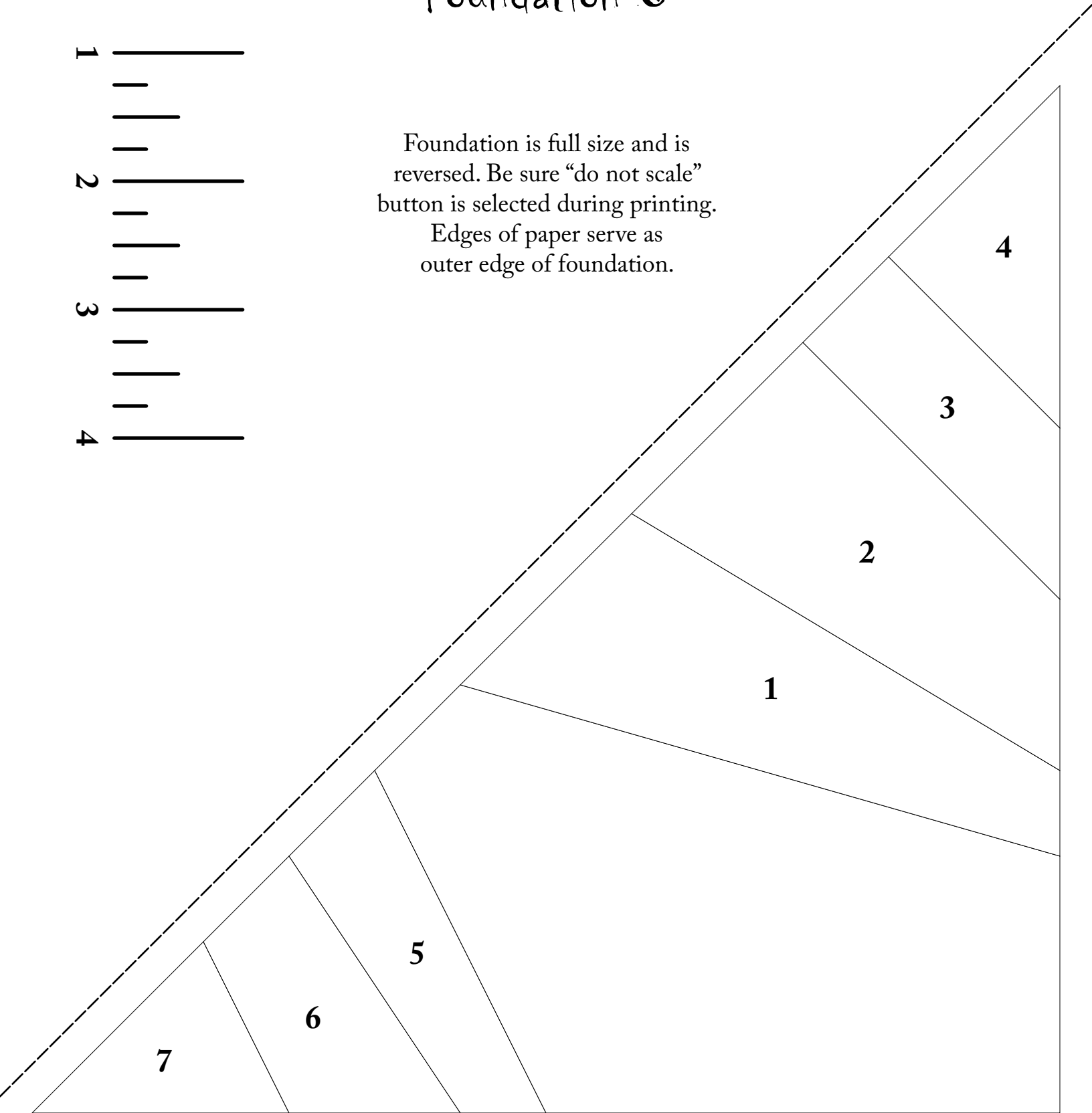


Wonky Webs

Foundation 8



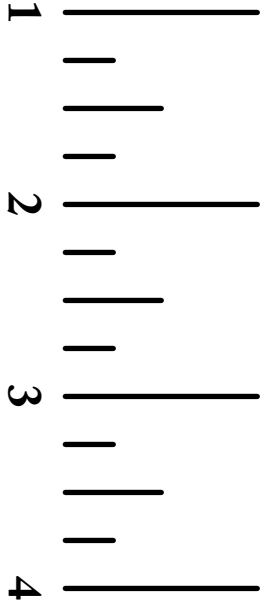
Foundation is full size and is reversed. Be sure "do not scale" button is selected during printing.
Edges of paper serve as outer edge of foundation.



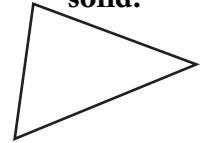
Wonky Webs

Templates

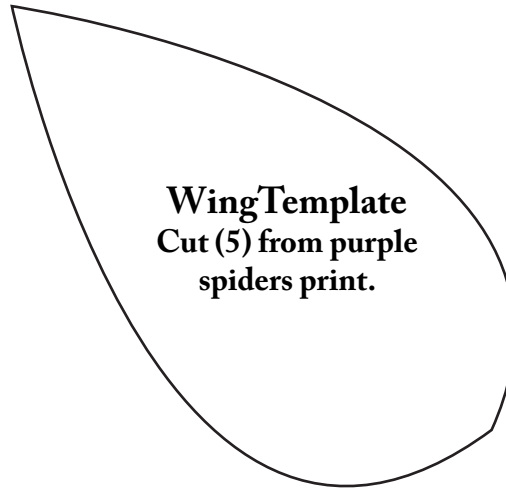
Templates are full size, are not reversed, and do not include seam allowances. Be sure "do not scale" button is selected during printing.



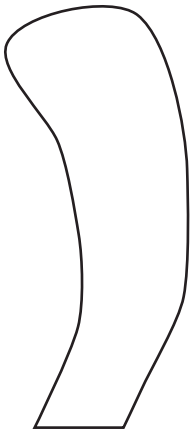
Beak Template
Cut (5) from black solid.



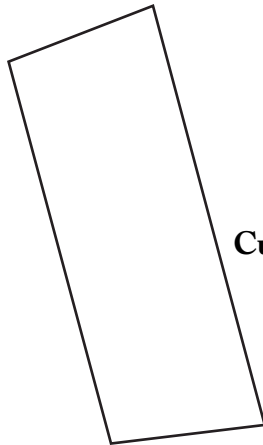
Wing Template
Cut (5) from purple spiders print.



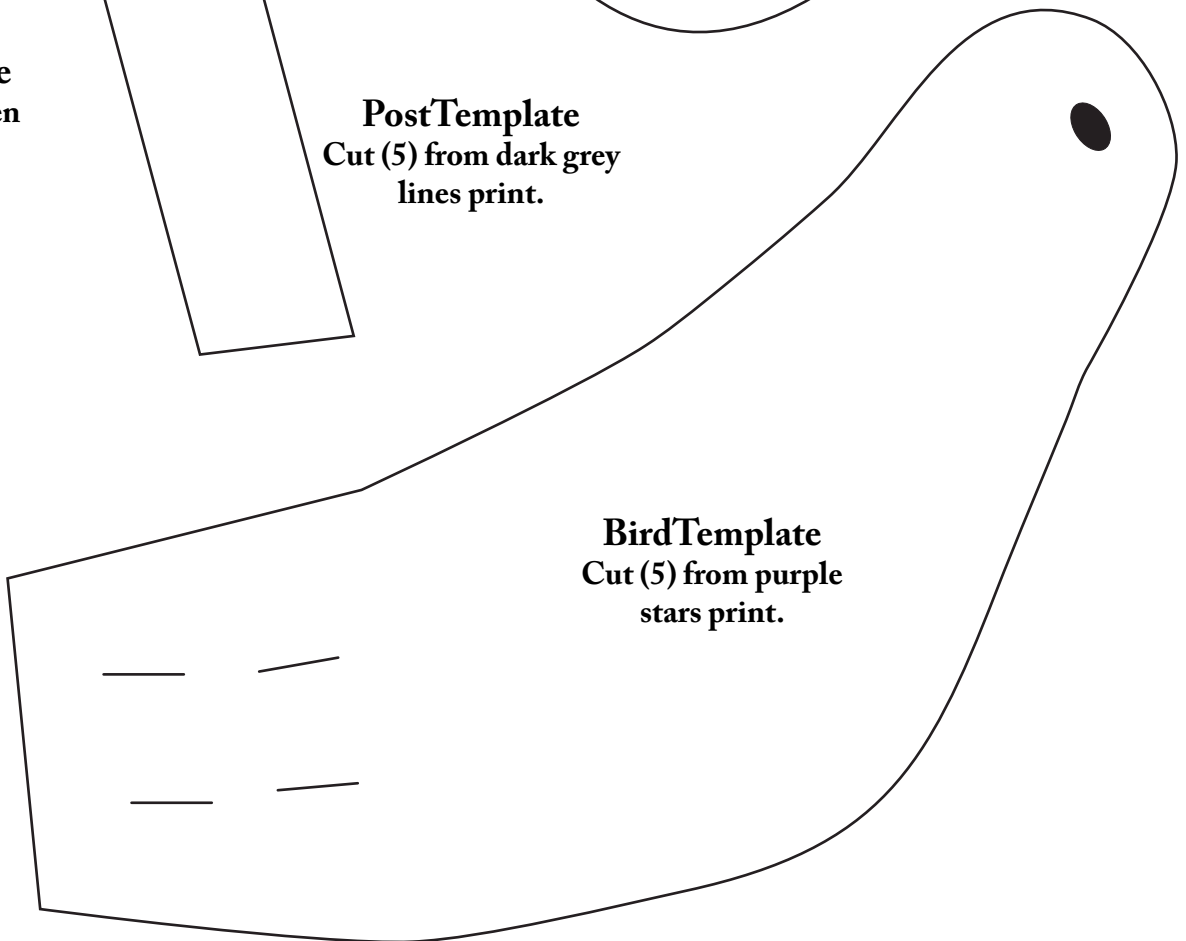
Stem Template
Cut (5) from green lines print.



Post Template
Cut (5) from dark grey lines print.

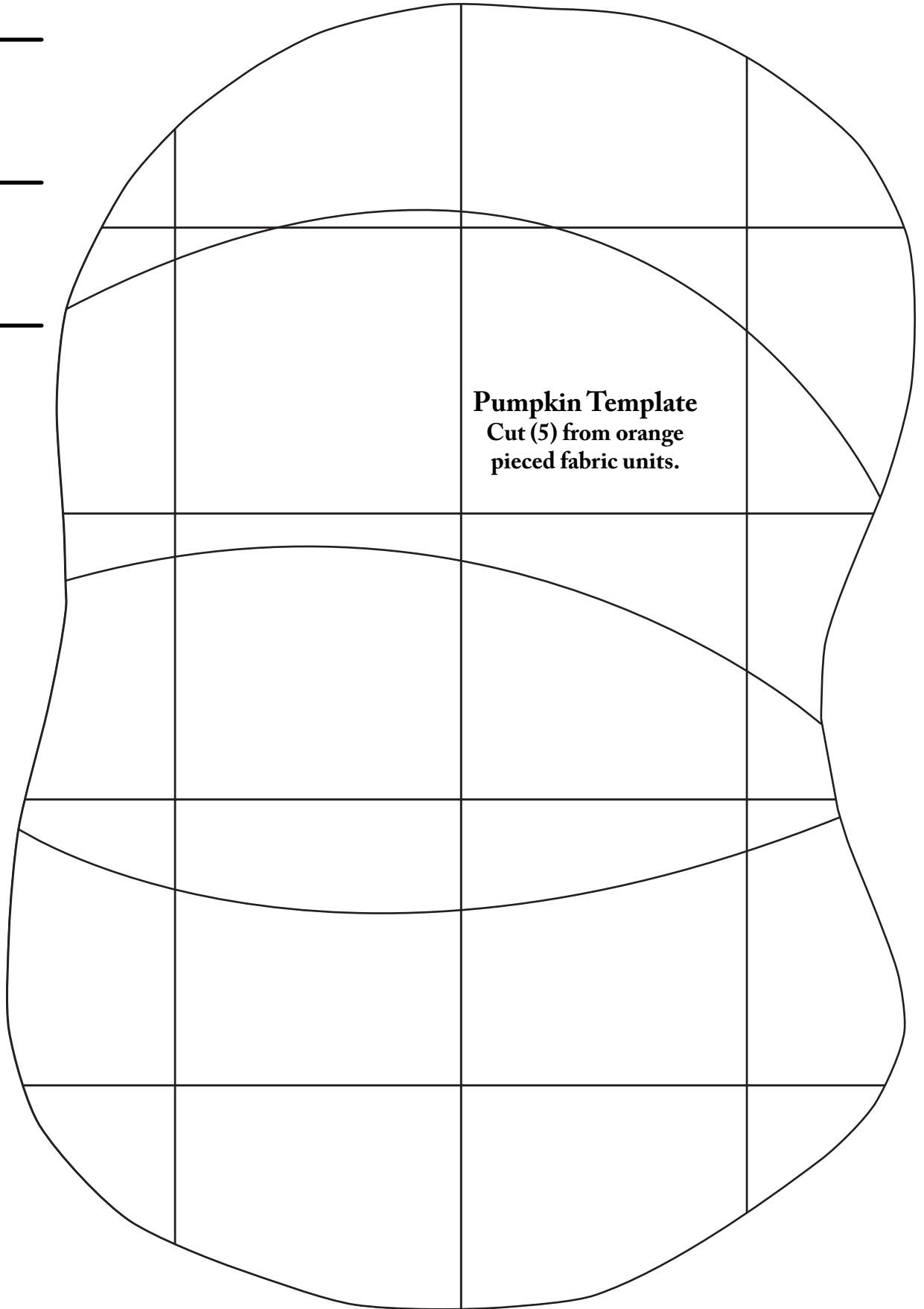
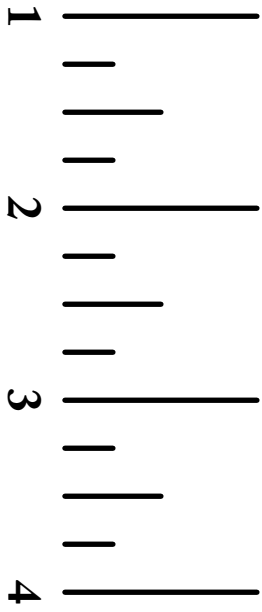


Bird Template
Cut (5) from purple stars print.



Wonky Webs Templates

Templates are full size, are not reversed, and do not include seam allowances. Be sure "do not scale" button is selected during printing.



Pumpkin Template
Cut (5) from orange pieced fabric units.