

Country Stars

A Free Pattern Featuring "Mending Fences" Fabrics by

Lynette Anderson Designs 

Finished Quilt Size: 81" x 91" | Quilt Design By Wendy Sheppard



To view more from Lynette Anderson Designs, please visit
www.lynetteandersondesigns.com.au

OR

Lynette's Blog at
www.lynetteandersondesigns.typepad.com

LECIEN

www.lecien.co.jp/en/hobby

©2013 Lynette Anderson Designs

Materials for Quilt



35049-30
1/4 yard



35049-11
3/8 yard



35049-10
3/8 yard



35049-70
3/8 yard



35044-20
1/4 yard



35044-10
3/8 yard



35044-70
3/8 yard



35045-20
1/8 yard



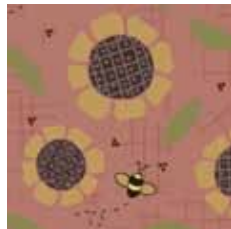
35045-10
3/8 yard



35045-80
1/8 yard



35048-10
3/8 yard



35048-20
5/8 yard



35048-70
7/8 yard



35048-30
3/8 yard



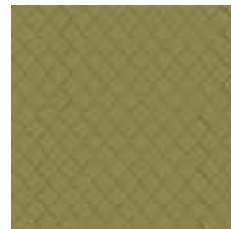
35046-10
1/4 yard



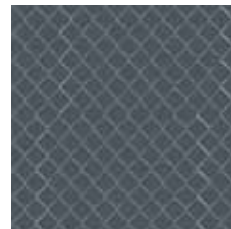
35046-70
1/8 yard



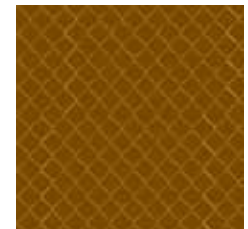
35046-20
3/8 yard



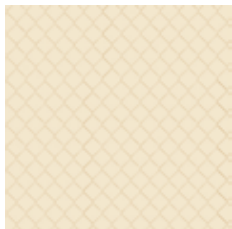
35050-60
3/8 yard



35050-70
1/4 yard



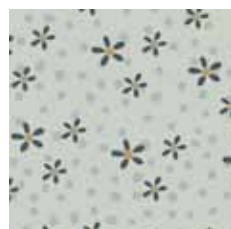
35050-80
1/4 yard



35050-10
2 1/8 yard



35047-60
3/8 yard



35047-70
3/8 yard



35047-20
3/4 yard



35047-10
3/8 yard

Optional: 5/8 yard of blue chicken wire (35050-70), cut in 2 1/4" wide strips and pieced using diagonal seams to make one continuous binding strip
 85" x 95" piece of backing fabric
 85" x 95" piece of batting
 Matching threads and basic sewing supplies

Cutting Instructions

1. From cream home farm fabric, cut for

a. pieced star blocks

widthwise, 1 (3 1/2" x 42") strip. Subcut 10 (3 1/2" x 3 1/2") squares.

widthwise, 1 (4 1/4" x 42") strip. Subcut 8 (4 1/4" x 4 1/4") squares.

b. outer border

widthwise, 1 (3 1/2" x 42") strip. Subcut 4 (3 1/2" x 5 1/2") rectangles.

Repeat the same cutting scheme for:

cream cotton weed,

green cotton weed,

blue cotton weed,

cream sunflower meadow,

red sunflower meadow,

tan seeds in the wind,

blue seeds in the wind,

pink hens and chicks,

blue home farm,

beige harvest,

green chicken wire

2. From red seeds in the wind fabric, cut for

a. pieced star blocks

widthwise, 1 (3 1/2" x 42") strip. Subcut 10 (3 1/2" x 3 1/2") squares.

widthwise, 1 (4 1/4" x 42") strip. Subcut 8 (4 1/4" x 4 1/4") squares.

Repeat the same cutting scheme for:

blue chicken wire,

brown chicken wire,

cream hens and chicks

pink home farm

3. From blue sunflower meadow fabric, cut for

a. pieced star blocks

widthwise, 1 (3 1/2" x 42") strip. Subcut 10 (3 1/2" x 3 1/2") squares.

widthwise, 1 (4 1/4" x 42") strip. Subcut 8 (4 1/4" x 4 1/4") squares.

b. inner border #3

widthwise, 8 (2" x 42") strips. Piece strips using diagonal seams, and subcut 2 (2" x 68 1/2") and 2 (2" x 75 1/2") strips.

c. outer border

widthwise, 1 (3 1/2" x 42") strip. Subcut 4 (3 1/2" x 5 1/2") rectangles.

4. From pink cottonweed fabric,

a. pieced star blocks

widthwise, 1 (3 1/2" x 42") strip. Subcut 10 (3 1/2" x 3 1/2") squares.

widthwise, 1 (4 1/4" x 42") strip. Subcut 8 (4 1/4" x 4 1/4") squares.

b. inner border #2

widthwise, 7 (2" x 42") strips. Piece strips using diagonal seams, and subcut 2 (2" x 65 1/2") and 2 (2" x 72 1/2") strips.

c. outer border

widthwise, 1 (3 1/2" x 42") strip. Subcut 4 (3 1/2" x 5 1/2") rectangles.

5. From cream chicken wire fabric, cut for

a. pieced star blocks

widthwise, 1 (3 1/2" x 42") strip. Subcut 10 (3 1/2" x 3 1/2") squares.

widthwise, 1 (4 1/4" x 42") strip. Subcut 8 (4 1/4" x 4 1/4") squares.

b. sashing rectangles

widthwise, 9 (1 1/2" x 42") strips. Subcut 35 (1 1/2" x 9 1/2") rectangles.

c. sashing strips

widthwise, 9 (1 1/2" x 42") strips. Piece strips using diagonal seams, and subcut 6 (1 1/2" x 59 1/2") strips.

d. inner border #1

widthwise, 7 (2" x 42") strips. Piece strips using diagonal seams, and subcut 2 (2" x 62 1/2") and 2 (2" x 69 1/2") strips.

e. inner border #4

widthwise, 8 (1 1/2" x 42") strips. Piece strips using diagonal seams, and subcut 2 (1 1/2" x 70 1/2") and 2 (1 1/2" x 78 1/2") strips.

f. inner border #6

widthwise, 8 (1 1/2" x 42") strips. Piece strips using diagonal seams, and subcut 2 (1 1/2" x 75 1/2") and 2 (1 1/2" x 83 1/2") strips.

6. From brown harvest fabric, cut for

a. pieced star blocks

widthwise 1 (4 1/2" x 42") strip. Subcut 2 (3 1/2" x 3 1/2") and 4 (4 1/4" x 4 1/4") squares.

7. From brown seeds in the wind fabric, cut for

a. pieced star blocks

widthwise, 1 (3 1/2" x 42") strip. Subcut 8 (3 1/2" x 3 1/2") squares.

widthwise, 1 (4 1/4" x 42") strip. Subcut 4 (4 1/4" x 4 1/4") squares.

b. outer border

widthwise, 1 (3 1/2" x 42") strip. Subcut 4 (3 1/2" x 5 1/2") rectangles.

8. From pink harvest fabric, cut for

a. outer border

widthwise, 1 (3 1/2" x 42") strip. Subcut 4 (3 1/2"

x 5 1/2") rectangles.
Repeat the same cutting scheme for:
green hens and chicks

9. From pink sunflower meadow fabric, cut for
a. inner border #5
widthwise, 8 (2" x 42") strips. Pieces strips using
diagonal seams, and subcut 2 (2" x 73 1/2") and 2
(2" x 80 1/2") strips.
b. outer border
widthwise, 1 (3 1/2" x 42") strip. Subcut 4 (3 1/2"
x 3 1/2") squares.

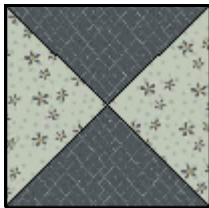
Block Construction

(blue chicken wire/blue cotton weed block as
example):

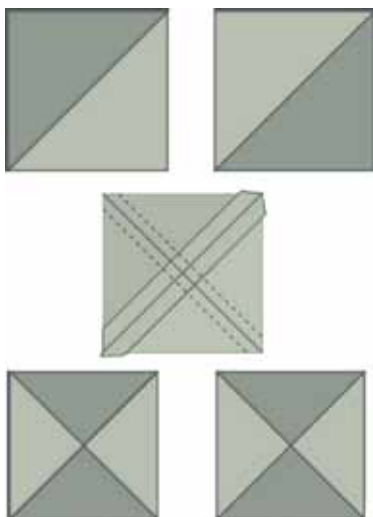
1. Making QST units.

Draw a diagonal line on the wrong side of 1 (4 1/4"
x 4 1/4") blue chicken wire square. Place square,
right sides together, on 1 (4 1/4" x 4 1/4") blue
cotton weed square. Sew 1/4" away from and , on
both sides of the drawn line. Cut along the drawn
line to yield 2 HST units.

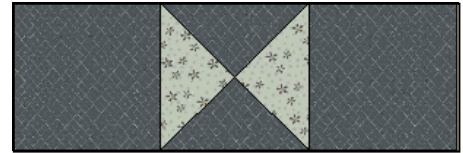
Draw a diagonal line on the wrong side of 1 HST
unit. Place unit, right sides together, on the
other HST unit, with contrasting fabrics for the
triangles. Sew 1/4" away from and , on both sides
of the drawn line. Cut along the drawn line to yield
2 QST units.



Repeat to make a total of 4 QST units.

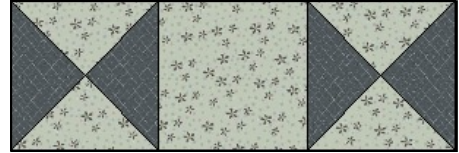


2. Sew 2 (3 1/2" x 3 1/2") blue chicken wire
squares to the opposite side of 1 QST unit, as
shown.



Repeat to make two sewn units (A).

3. Sew 2 QST units to the opposite sides of 1 (3
1/2" x 3 1/2") blue cotton weed square, as shown
(B).

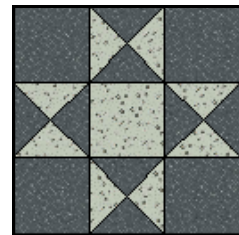


4. Arrange and sew together the sewn units
(A-B-A) to complete a block.

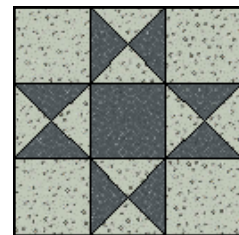


5. Repeat to make a total 2 blocks in the following
colorways:

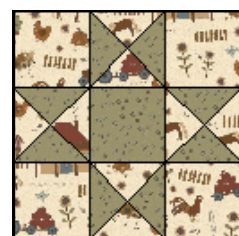
2 blue chicken wire/blue cotton weed blocks



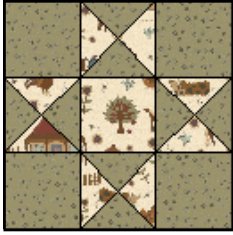
2 blue chicken wire/blue cotton weed blocks
(reverse)



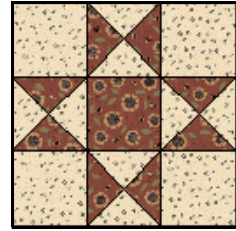
2 cream home farm/green cotton weed blocks



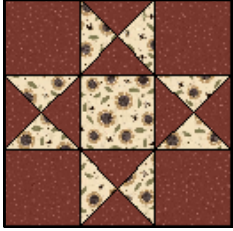
2 cream home farm/green cotton weed blocks (reverse)



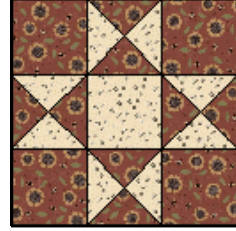
2 cream cotton weed/red sunflower meadow blocks



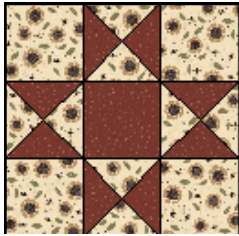
2 red seeds in the wind/cream sunflower meadow blocks



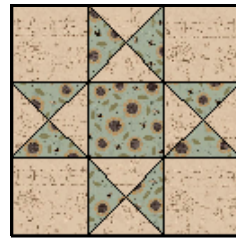
2 cream cotton weed/red sunflower meadow blocks (reverse)



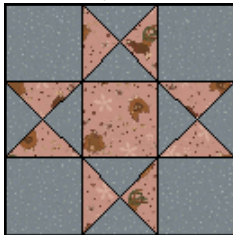
2 red seeds in the wind/cream sunflower meadow blocks (reverse)



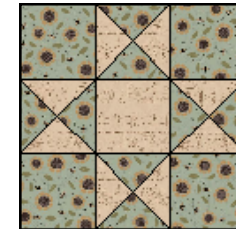
2 beige harvest/blue sunflower meadow blocks



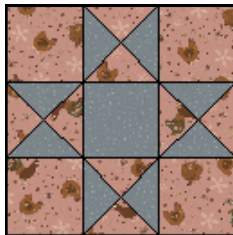
2 blue seeds in the wind/pink hens and chicks



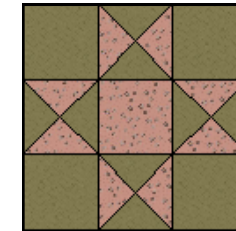
2 beige harvest/blue sunflower meadow blocks (reverse)



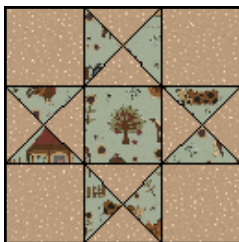
2 blue seeds in the wind/pink hens and chicks (reverse)



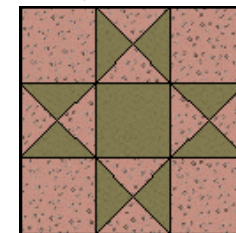
2 green chicken wire/pink cotton weed



2 tan seeds in the wind/blue home farm blocks



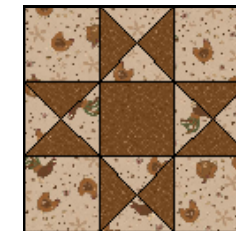
2 green chicken wire/pink cotton weed (reverse)



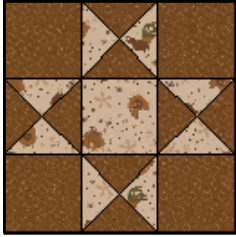
2 tan seeds in the wind/blue home farm blocks (reverse)



2 cream hens and chicks/brown chicken wire



2 cream hens and chicks/brown chicken wire (reverse)



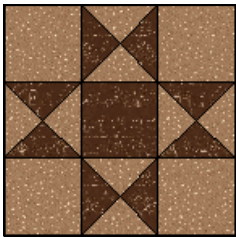
2 cream chicken wire/pink home farm



2 cream chicken wire/pink home farm (reverse)



2 brown seeds in the wind/brown harvest blocks



Quilt Center Assembly:

1. Assembling Rows. Arrange and sew together the blocks to make the following rows, as shown, with (1 1/2" x 9 1/2") cream chicken wire sashing rectangles in between the blocks.

Row 1:



Row 2:



Row 3:



Row 4:



Row 5:



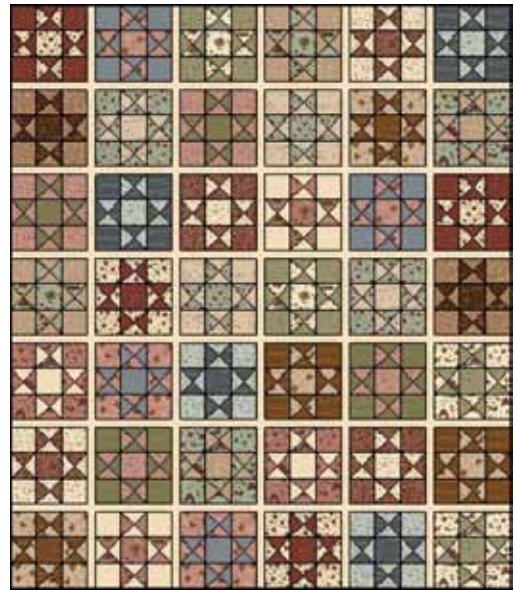
Row 6:



Row 7:



2. Sew the rows together to complete quilt center, with (1 1/2" x 59 1/2") cream chicken wire sashing strips in between rows.



Quilt Top Assembly:

1. Inner Border #1. Sew 2 (2" x 69 1/2") cream chicken wire strips to the opposite long sides of quilt center. Sew 2 (2" x 62 1/2") cream chicken wire strips to the remaining opposite short sides of quilt center.

2. Inner Border #2. Sew 2 (2" x 72 1/2") pink cotton weed strips to the opposite long sides of quilt center. Sew 2 (2" x 65 1/2") pink cotton weed strips to the remaining opposite short sides of quilt center.

3. Inner border #3. Sew 2 (2" x 75 1/2") blue sunflower meadow strips to the opposite long sides of quilt center. Sew 2 (2" x 68 1/2") blue sunflower meadow strips to the remaining opposite short sides of quilt center.
4. Inner Border #4. Sew 2 (1 1/2" x 78 1/2") cream chicken wire strips to the opposite long sides of quilt center. Sew 2 (1 1/2" x 70 1/2") cream chicken wire strips to the remaining opposite short sides of quilt center.
5. Sew 2 (2" x 80 1/2") red sunflower meadow strips to the opposite long sides of quilt center. Sew 2 (2" x 73 1/2") pink sunflower meadow strips to the remaining opposite short sides of quilt center.
6. Inner Border #6. Sew 2 (1 1/2" x 83 1/2") cream chicken wire strips to the opposite long sides of quilt center. Sew 2 (1 1/2" x 75 1/2") cream chicken wire strips to the remaining opposite short sides of quilt center.

7. Pieced Outer Border.

Arrange and sew together (3" x 5") rectangles to make the right outer border strip. Add the pieced strip to the right side of quilt center.

Arrange and sew together (3" x 5") rectangles to make the left outer border strip. Add the pieced strip to the left side of quilt center.

Arrange and sew together (3" x 5") rectangles to make the top outer border strip. Sew to the short sides of the pieced strip 2 (3 1/2" x 3 1/2") pink sunflower meadow squares. Add the pieced strip to the top of quilt center.



Arrange and sew together (3" x 5") rectangles to make the bottom outer border strip. Sew to the short sides of the pieced strip 2 (3 1/2" x 3 1/2") pink sunflower meadow squares. Add the pieced strip to the bottom of quilt center to complete quilt top.



Quilting Instructions:

1. With the backing fabric laying taut, place batting and then quilt top to form quilt sandwich. Baste quilt sandwich.
2. Quilt as desired.
3. Square up quilt before adding binding strip, hanging sleeve and label.