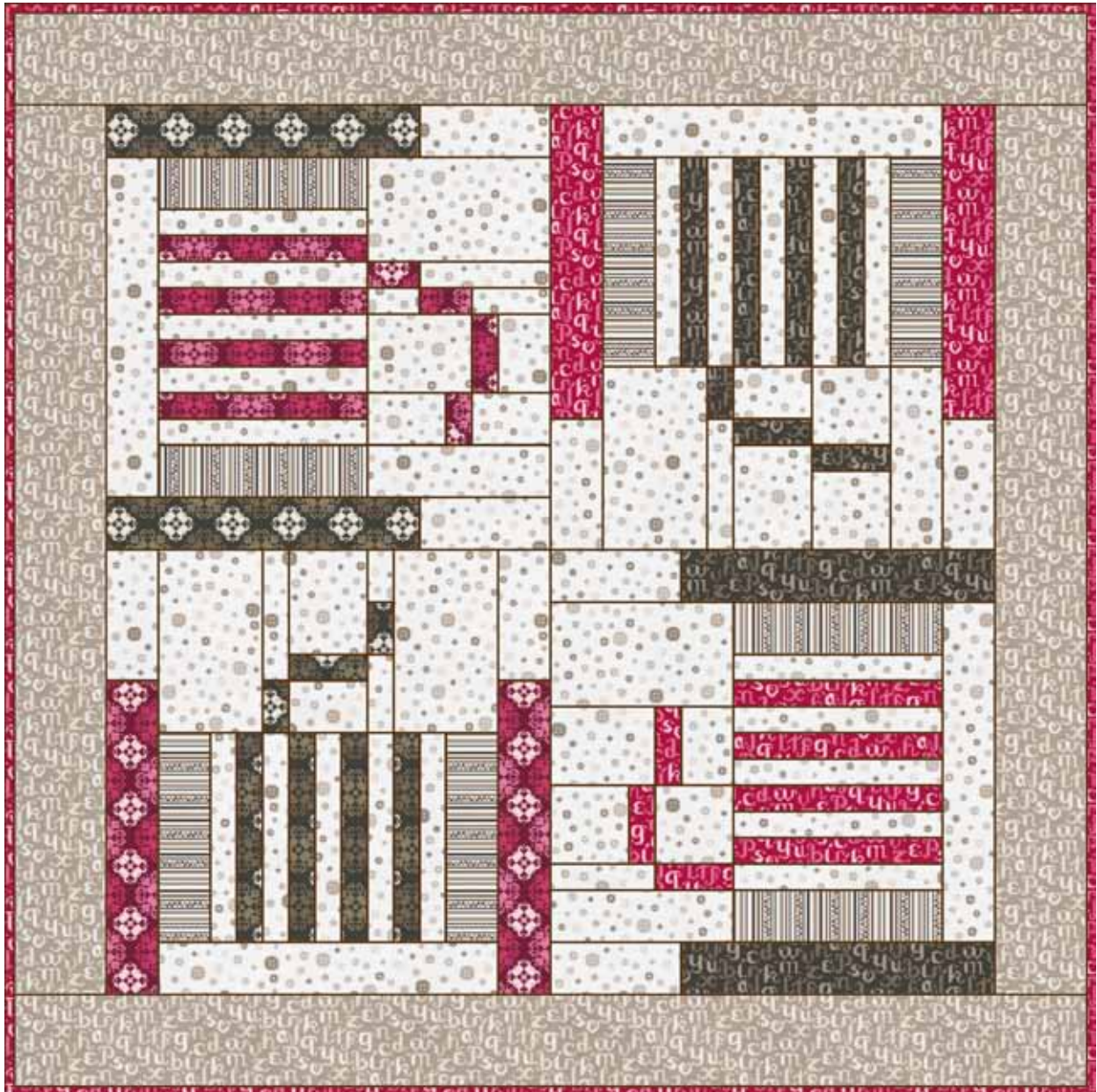


# “La Petite Mercerie” Spooling Around

By Emmanuelle Carre



Finished size 41" x 41"

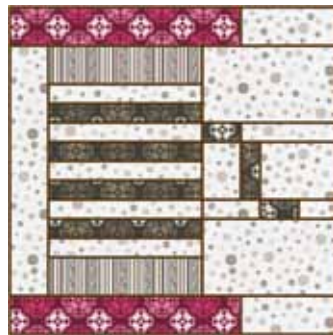
To view “La Petite Mercerie” and download  
Emmanuelle Carre's free pattern, please visit  
[www.lecien.co.jp/en/hobby](http://www.lecien.co.jp/en/hobby) or [www.lecienusa.com](http://www.lecienusa.com)

# LECIEN



## Cutting instructions

There are 4 spools; the cutting instructions are for each individual spool. Each spool block is square and you can create as many as you would like dependent on the finished size of the quilt you desired. The instructions are for a wall hanging using each of the four spool blocks once.



### Spool A

#### Thread

Cut (2)  $1 \frac{1}{2}$ " x 40" strips

#### Cut into:

- (4)  $1 \frac{1}{2}$ " x  $8 \frac{1}{2}$ "
- (3)  $1 \frac{1}{2}$ " x  $2 \frac{1}{2}$ "
- (1)  $1 \frac{1}{2}$ " x  $3 \frac{1}{2}$ "

### Spindle

Cut (2)  $1 \frac{1}{2}$ " strips

#### Cut into:

- (5)  $1 \frac{1}{2}$ " x  $8 \frac{1}{2}$ "

### Spool Hat

Cut (2)  $2 \frac{1}{2}$ " x  $12 \frac{1}{2}$ " (hat)

Cut (2)  $2 \frac{1}{2}$ " x  $8 \frac{1}{2}$ "

#### (stripe)

### Background

Cut (1)  $1 \frac{1}{2}$ " strip

#### Cut into:

- (1)  $1 \frac{1}{2}$ " x  $2 \frac{1}{2}$ "
- (1)  $1 \frac{1}{2}$ " x  $3 \frac{1}{2}$ "
- (1)  $1 \frac{1}{2}$ " x  $5 \frac{1}{2}$ "

Cut (1)  $2 \frac{1}{2}$ " strip

#### Cut into:

- (1)  $2 \frac{1}{2}$ " x  $13 \frac{1}{2}$ "
- (2)  $2 \frac{1}{2}$ " x  $5 \frac{1}{2}$ "
- (2)  $2 \frac{1}{2}$ " x  $3 \frac{1}{2}$ "

Cut (1)  $3 \frac{1}{2}$ " strip (this will be enough for (4) spool blocks).

#### Cut into:

- (1)  $3 \frac{1}{2}$ " x  $2 \frac{1}{2}$ "
- (1)  $3 \frac{1}{2}$ " x  $4 \frac{1}{2}$ "

Cut (1)  $7 \frac{1}{2}$ " strip (this will be enough for (4) blocks).

#### Cut into:

- (1)  $7 \frac{1}{2}$ " x  $2 \frac{1}{2}$ "
- (1)  $7 \frac{1}{2}$ " x  $4 \frac{1}{2}$ "

### Spool B

#### Thread

Cut (2)  $1 \frac{1}{2}$ " x 40" strips

#### Cut into:

- (4)  $1 \frac{1}{2}$ " x  $8 \frac{1}{2}$ "
- (1)  $1 \frac{1}{2}$ " x  $2 \frac{1}{2}$ "
- (2)  $1 \frac{1}{2}$ " x  $3 \frac{1}{2}$ "

### Spindle

Cut (2)  $1 \frac{1}{2}$ " strips

#### Cut into:

- (5)  $1 \frac{1}{2}$ " x  $8 \frac{1}{2}$ "

### Spool Hat

Cut (2)  $2 \frac{1}{2}$ " x  $12 \frac{1}{2}$ " (hat)

Cut (2)  $2 \frac{1}{2}$ " x  $8 \frac{1}{2}$ "

#### (stripe)

### Background

Cut (1)  $1 \frac{1}{2}$ " strip

#### Cut into:

- (1)  $1 \frac{1}{2}$ " x  $5 \frac{1}{2}$ "

Cut (1)  $2 \frac{1}{2}$ " strip

#### Cut into:

- (1)  $2 \frac{1}{2}$ " x  $13 \frac{1}{2}$ "
- (2)  $2 \frac{1}{2}$ " x  $5 \frac{1}{2}$ "

Cut (1)  $3 \frac{1}{2}$ " strip

#### Cut into:

- (1)  $3 \frac{1}{2}$ " x  $2 \frac{1}{2}$ "
- (2)  $3 \frac{1}{2}$ " x  $3 \frac{1}{2}$ "
- (1)  $3 \frac{1}{2}$ " x  $4 \frac{1}{2}$ "

Cut (1)  $7 \frac{1}{2}$ " strip

#### Cut into:

- (1)  $7 \frac{1}{2}$ " x  $2 \frac{1}{2}$ "
- (1)  $7 \frac{1}{2}$ " x  $4 \frac{1}{2}$ "

### Spool C

#### Thread

Cut (2)  $1 \frac{1}{2}$ " x 40" strips

#### Cut into:

- (4)  $1 \frac{1}{2}$ " x  $8 \frac{1}{2}$ "
- (2)  $1 \frac{1}{2}$ " x  $2 \frac{1}{2}$ "
- (1)  $1 \frac{1}{2}$ " x  $3 \frac{1}{2}$ "

### Spindle

Cut (2)  $1 \frac{1}{2}$ " strips

#### Cut into:

- (5)  $1 \frac{1}{2}$ " x  $8 \frac{1}{2}$ "

### Spool Hat

Cut (2)  $2 \frac{1}{2}$ " x  $12 \frac{1}{2}$ " (hat)

Cut (2)  $2 \frac{1}{2}$ " x  $8 \frac{1}{2}$ "

#### (stripe)

### Background

Cut (1)  $1 \frac{1}{2}$ " strip

#### Cut into:

- (1)  $1 \frac{1}{2}$ " x  $2 \frac{1}{2}$ "
- (1)  $1 \frac{1}{2}$ " x  $3 \frac{1}{2}$ "
- (1)  $1 \frac{1}{2}$ " x  $5 \frac{1}{2}$ "

Cut (1)  $2 \frac{1}{2}$ " strip

#### Cut into:

- (1)  $2 \frac{1}{2}$ " x  $13 \frac{1}{2}$ "
- (2)  $2 \frac{1}{2}$ " x  $5 \frac{1}{2}$ "

Cut (1)  $3 \frac{1}{2}$ " strip

#### Cut into:

- (1)  $3 \frac{1}{2}$ " x  $2 \frac{1}{2}$ "
- (1)  $3 \frac{1}{2}$ " x  $4 \frac{1}{2}$ "

Cut (1)  $7 \frac{1}{2}$ " strip

#### Cut into:

- (2)  $7 \frac{1}{2}$ " x  $4 \frac{1}{2}$ "

### Spool D

#### Thread

Cut (2)  $1 \frac{1}{2}$ " x 40" strips

#### Cut into:

- (4)  $1 \frac{1}{2}$ " x  $8 \frac{1}{2}$ "
- (3)  $1 \frac{1}{2}$ " x  $3 \frac{1}{2}$ "

### Spindle

Cut (2)  $1 \frac{1}{2}$ " strips

#### Cut into:

- (5)  $1 \frac{1}{2}$ " x  $8 \frac{1}{2}$ "

### Spool Hat

Cut (2)  $2 \frac{1}{2}$ " x  $12 \frac{1}{2}$ " (hat)

Cut (2)  $2 \frac{1}{2}$ " x  $8 \frac{1}{2}$ "

#### (stripe)

### Background

Cut (1)  $1 \frac{1}{2}$ " strip

#### Cut into:

- (1)  $1 \frac{1}{2}$ " x  $4 \frac{1}{2}$ "

Cut (1)  $2 \frac{1}{2}$ " strip

#### Cut into:

- (1)  $2 \frac{1}{2}$ " x  $13 \frac{1}{2}$ "
- (2)  $2 \frac{1}{2}$ " x  $5 \frac{1}{2}$ "

Cut (1)  $3 \frac{1}{2}$ " strip

#### Cut into:

- (1)  $3 \frac{1}{2}$ " x  $2 \frac{1}{2}$ "
- (2)  $3 \frac{1}{2}$ " x  $3 \frac{1}{2}$ "
- (1)  $3 \frac{1}{2}$ " x  $4 \frac{1}{2}$ "

Cut (1)  $7 \frac{1}{2}$ " strip

#### Cut into:

- (1)  $7 \frac{1}{2}$ " x  $2 \frac{1}{2}$ "
- (1)  $7 \frac{1}{2}$ " x  $4 \frac{1}{2}$ "

### Boarder

Cut (4) 4" strips

#### Cut into:

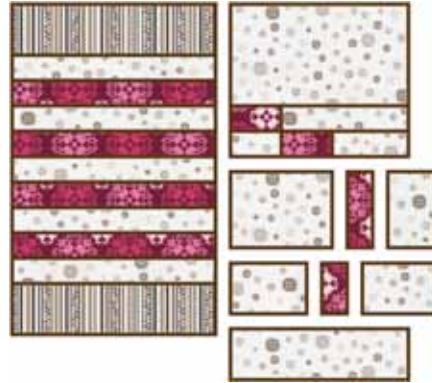
- (2) 4" x  $34 \frac{1}{2}$ "
- (2) 4" x  $41 \frac{1}{2}$ "



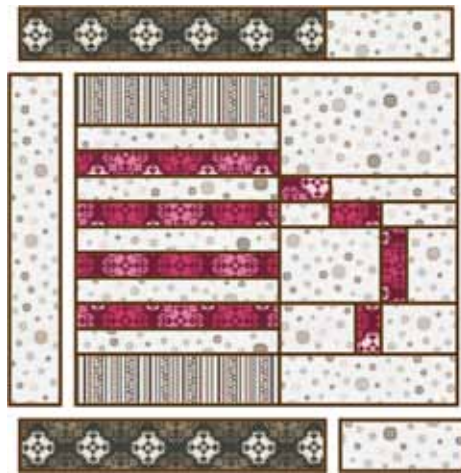


### Block Piecing

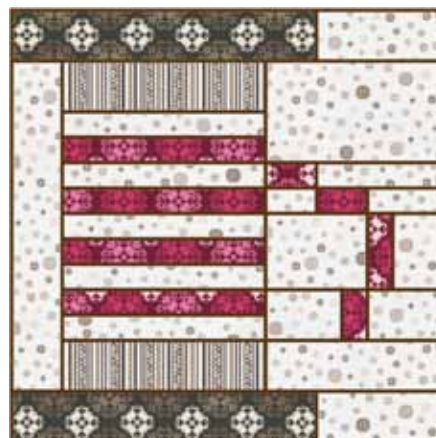
Start by constructing the spindle and thread by alternating the  $8 \frac{1}{2}$ " long pieces.



Add one section of the striped spool hat to each end and then construct the thread tail by following the diagram closely, working one strip at a time as shown.



Finish the block by adding the remaining background sections and the spool hats.



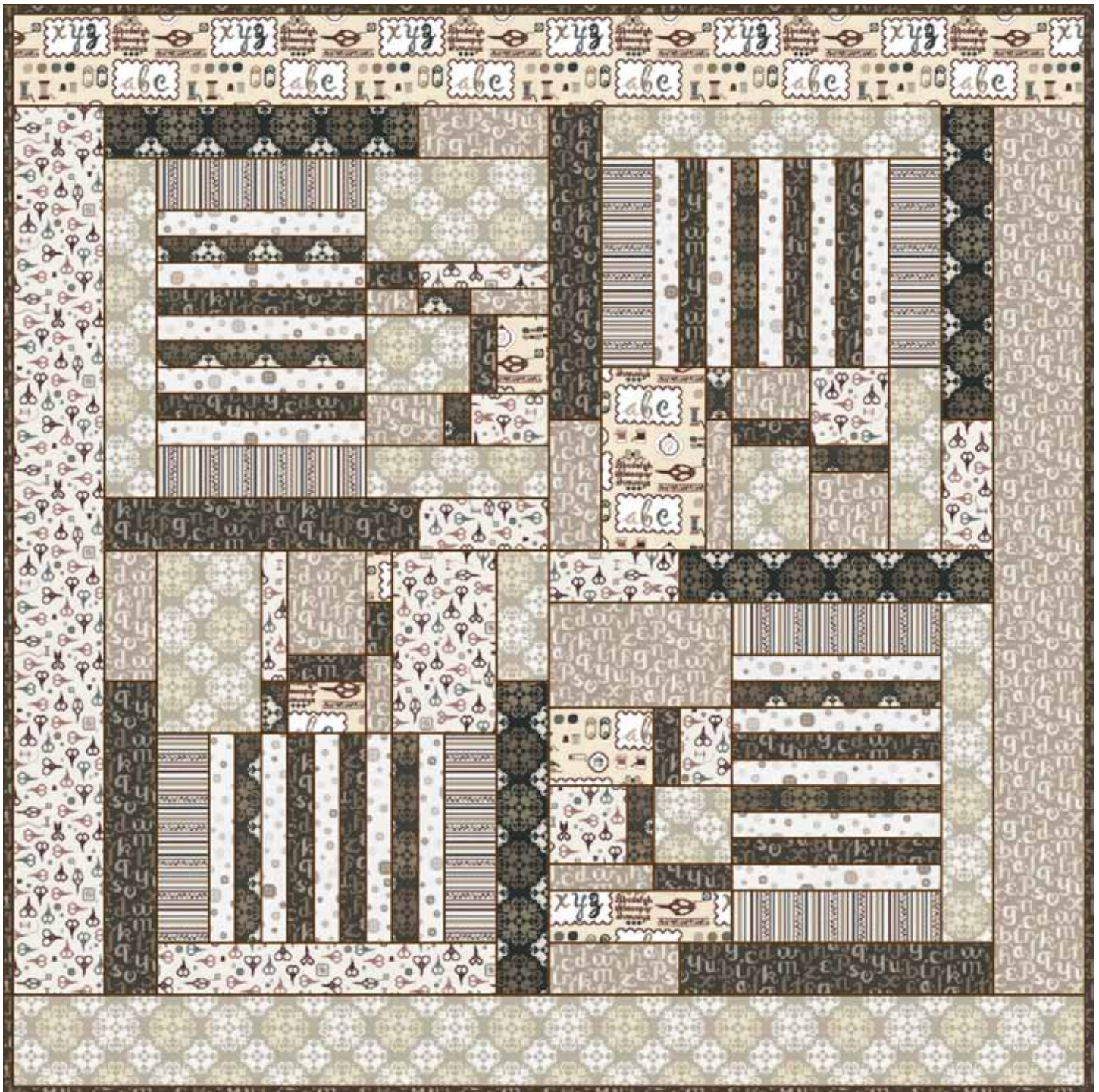
Sew the blocks together, attach borders and quilt as desired.



Emmanuelle's cross stitch charts are available through Lecien this fall. "La Petite Mercerie de Emmanuelle" or My Little Sewing Shop features a series of sewing shop themed designs to coordinate with her new fabric collection.

For more information on Emmanuelle visit her blog "Lin sans l'Autre" at [www.squarenews.blogs.com/linsanslautre/](http://www.squarenews.blogs.com/linsanslautre/)

Spooling Around shown here in browns using a scrappy background.







30422 - 30



30425 - 30



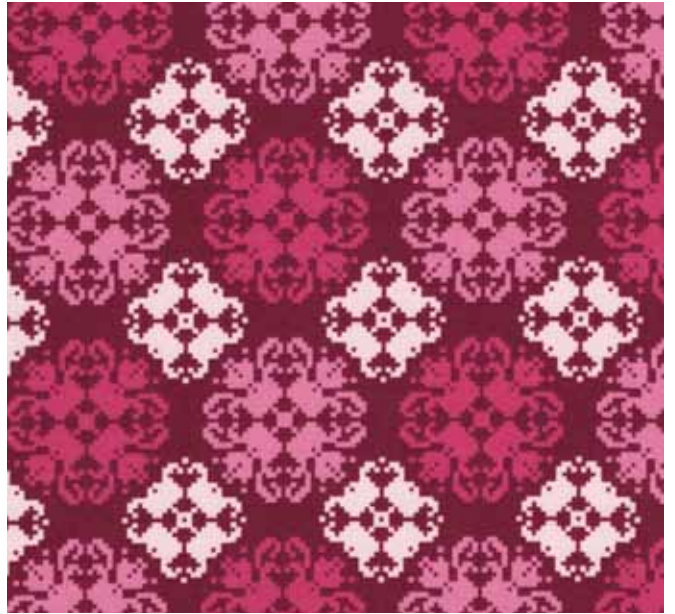
30426 - 30



30427 - 30



30424 - 30



30423 - 30

LECIEN U.S.A., Inc.





30422 - 80



30425 - 80



30424 - 80



30427 - 10



30423 - 90



30426 - 10



30423 - 10



30426 - 90





30422 - 70



30425 - 70



30426 - 70



30427 - 70



30424 - 70



30423 - 70



30423 - 100

LECIEN