

Floral Collection "Flower Sugar" A Dash of Sugar

by Elizabeth Scott of Late Bloomer Quilts



Finished size 45" x 54"

To view Floral Collection "Flower Sugar" and download Elizabeth Scott's free pattern, please visit www.lecien.com.jp/en/hobby and www.lecien.usa.com

LECIEN



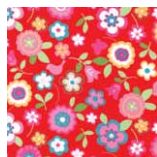
30281-70
1 1/4 yards



30284-50
1 fat eighth



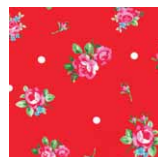
30284-10
1 fat eighth



30284-30
1 fat eighth



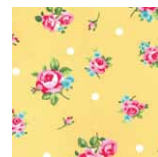
30282-10
1 fat eighth



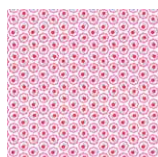
30282-30
1 fat eighth



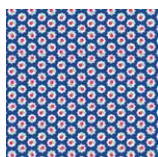
30282-70
1 fat eighth



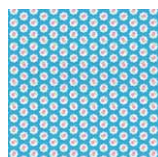
30282-50
1 fat eighth



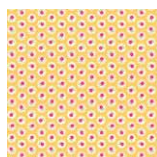
30285-20
1 fat eighth



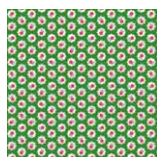
30285-71
1 fat eighth



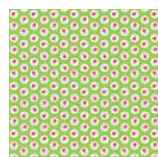
30285-70
1 fat eighth



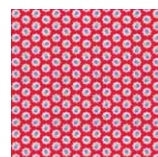
30285-50
1 fat eighth



30285-61
1 fat eighth



30285-60
1 fat eighth



30285-30
1/2 yard



4503-LP
3/8 yard

Cutting

For each background:

- (1) 2" strip
- (1) 3 7/8" strip

For each churn dash:

- (1) 2" strip
- (1) 3 7/8" strip

For the inner boarder:

- (4) 1 1/2" strips

For the outer boarder:

- (5) 8 1/2" strips

For the binding:

- (5) 2 1/4" strips

For the version shown, cut (2) 2" strips and (2) 3 7/8" strips from each fat eighth.

Block Piecing

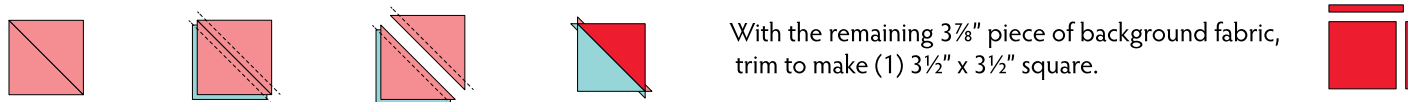
Stitch the 2" background strip and the 2" churn dash strip right sides together. Press well. Cut the strip into (4) 3 1/2" x 3 1/2" segments.



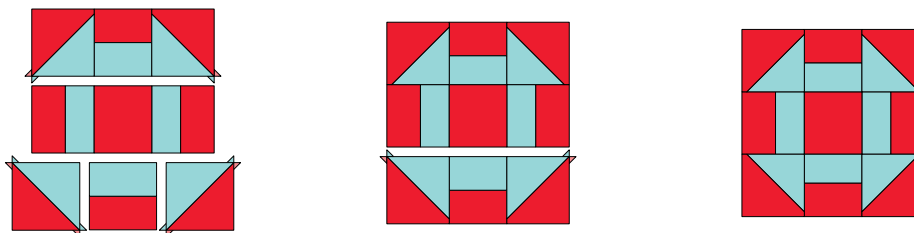
Cut the 3 7/8" background strip and the 3 7/8" churn dash strip into (4) 3 7/8" x 3 7/8" squares each.



Draw a diagonal line from corner to corner on the wrong side of the (4) 3 7/8" x 3 7/8" background squares. Using (1) 3 7/8" x 3 7/8" background square and (1) 3 7/8" x 3 7/8" churn dash square with the right sides together stitch 1/4" on each side of the diagonal line. Cut along the diagonal line to give (2) half square triangle. Press open. Repeat for remaining (3) pairs of 3 7/8" x 3 7/8" squares.



Assemble block as shown:



Quilt Assembly

Arrange blocks as shown. Stitch the horizontal rows of 3 blocks together. Join the (4) rows together to finish the quilt top.

Stitch the inner border strips together forming one long piece. Measure the quilt at the center point from the top to bottom and cut (2) strips to that measurement. Stitch to the sides of the quilt top. Measure the quilt from side to side across the center and cut (2) strips to that measurement. Stitch to the top and the bottom of the quilt.

Stitch the outer border strips together forming one long piece. Measure the quilt at the center point from the top to bottom and cut (2) strips to that measurement. Stitch to the sides of the quilt top. Measure the quilt from side to side across the center and cut (2) strips to that measurement. Stitch to the top and the bottom of the quilt.

Layer, baste and quilt. Bind using the (5) 2 1/4" strips.