

COLOR BASIC SHIRT SHAPED CONTAINER



LECIEN
LECIEN U.S.A., Inc.

To view the Color Basic Collection and download the free project,
please visit www.lecienusa.com
or www.lecien.co.jp/en/hobby

Shirt Shaped Small Container



Supplies

- One fat quarter
- One fat quarter for lining & gusset
- 8" x 14" for collar
- 1/4 yd interfacing
- 1/4 yd of 1/4" elastic

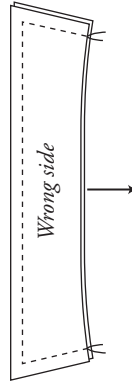
*Seam allowance is 1/4"

*Cut out all of the pieces

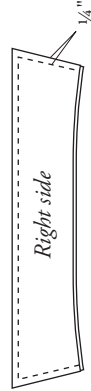
*See templates for details.

1. Collar

- 1 Iron interfacing to back of one collar piece.
Sew two collar pieces right sides together.



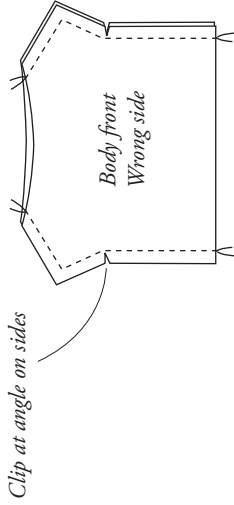
Turn right side out.
Top stitch 1/4" from finished edges.



2. Body

- 1 Iron interfacing to back of each body part.
Sew body parts right side together.
Clip at angle on sides.
Turn right sides out and press seams open.

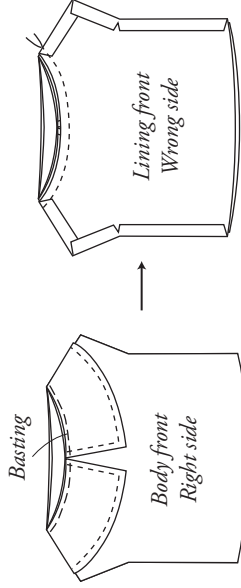
Sew lining pieces right sides together and press seams open.



3. Attach Collar to Body

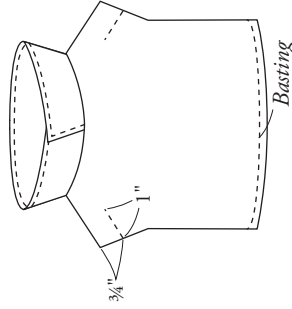
- 1 Find center of body front and mark.
Place a collar with open edges meeting at center mark on front. Baste.

Place lining over body right sides together.
Stitch around neck opening.



4. Stitch Body Front and Back Together

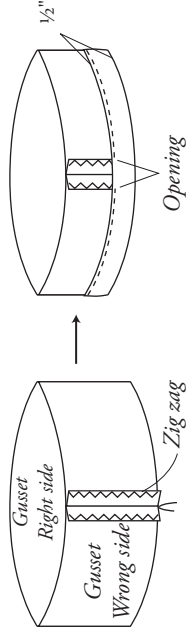
- 1 Turn right side out and stitch 3/4" below shoulder through front and back.
Baste lining and body together at lower edge.



5. Gusset

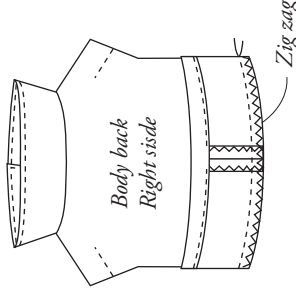
- 1 Finish seam edges on short sides of gusset.
Stitch 1/4" seam in gusset right side together.
Press seams open.

Turn 1/4" under one edge of gusset.
Turn again 1/2" and press. Stitch, leaving an opening to insert elastic.



6. Sewing Gusset to Body

- 1 Sew gusset to bottom edge of body right sides together.
Zig zag the seam to finish it.

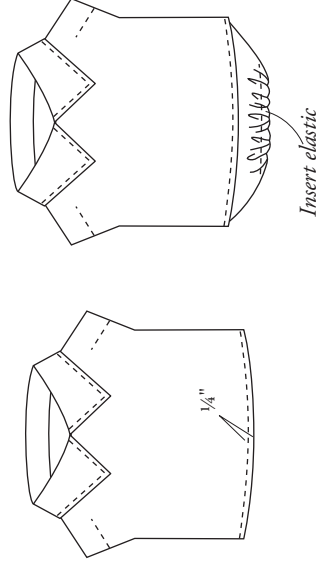


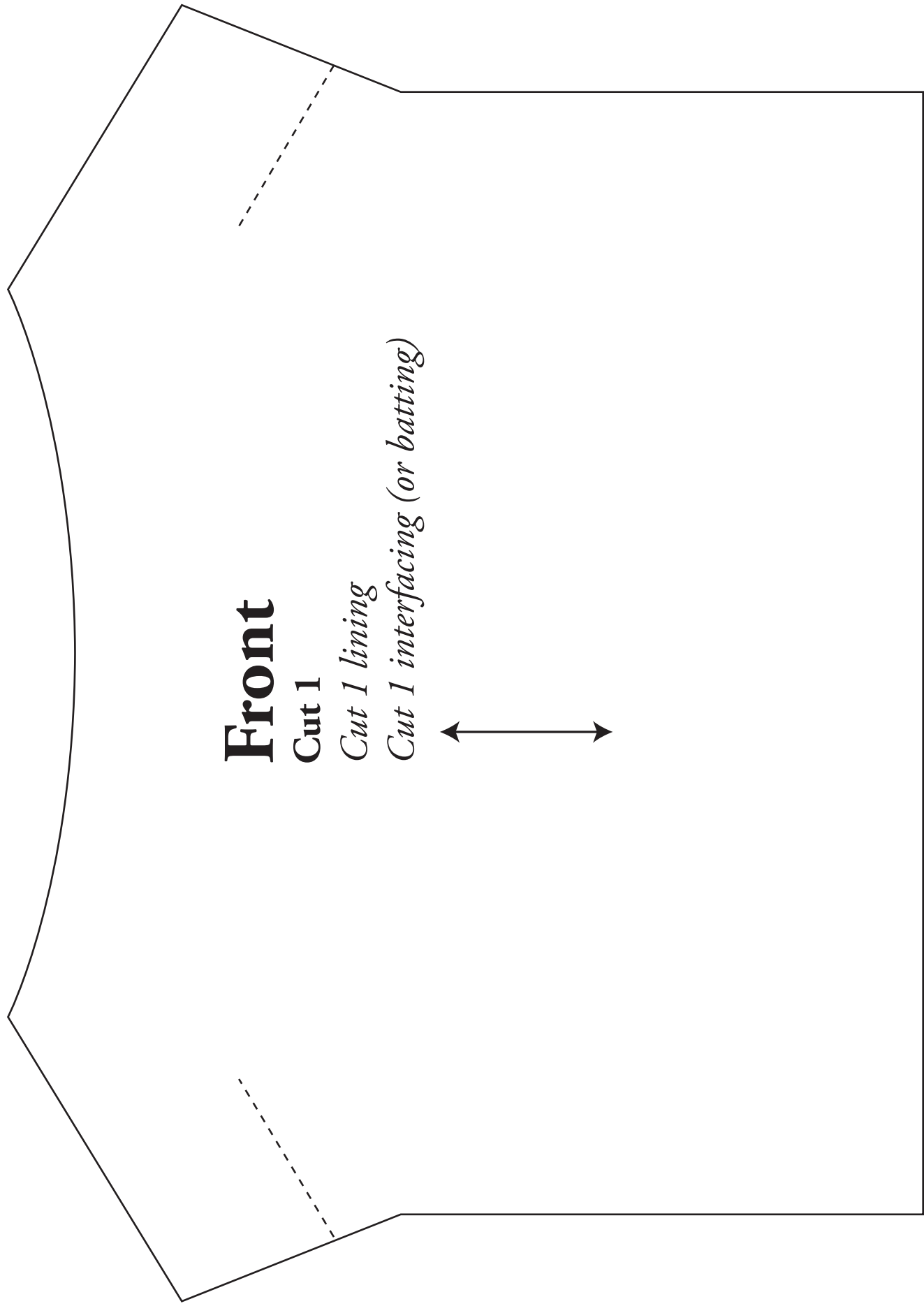
7. Finish

- 1 Turn right side out. Press seam toward body.

Top stitch along body edge.

Insert elastic into lower edge of gusset.





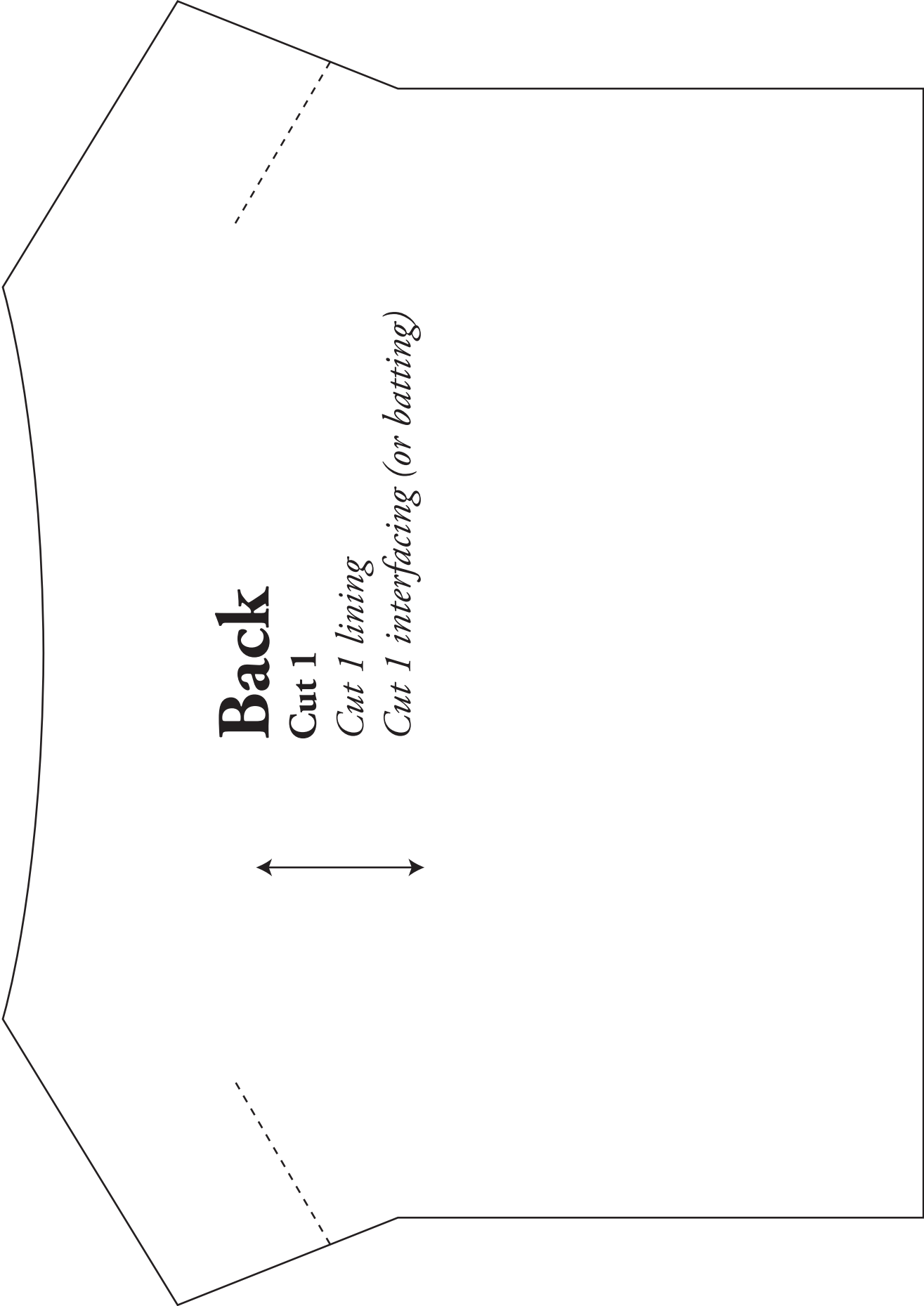
Front

Cut 1

Cut 1 lining

Cut 1 interfacing (or batting)





Back

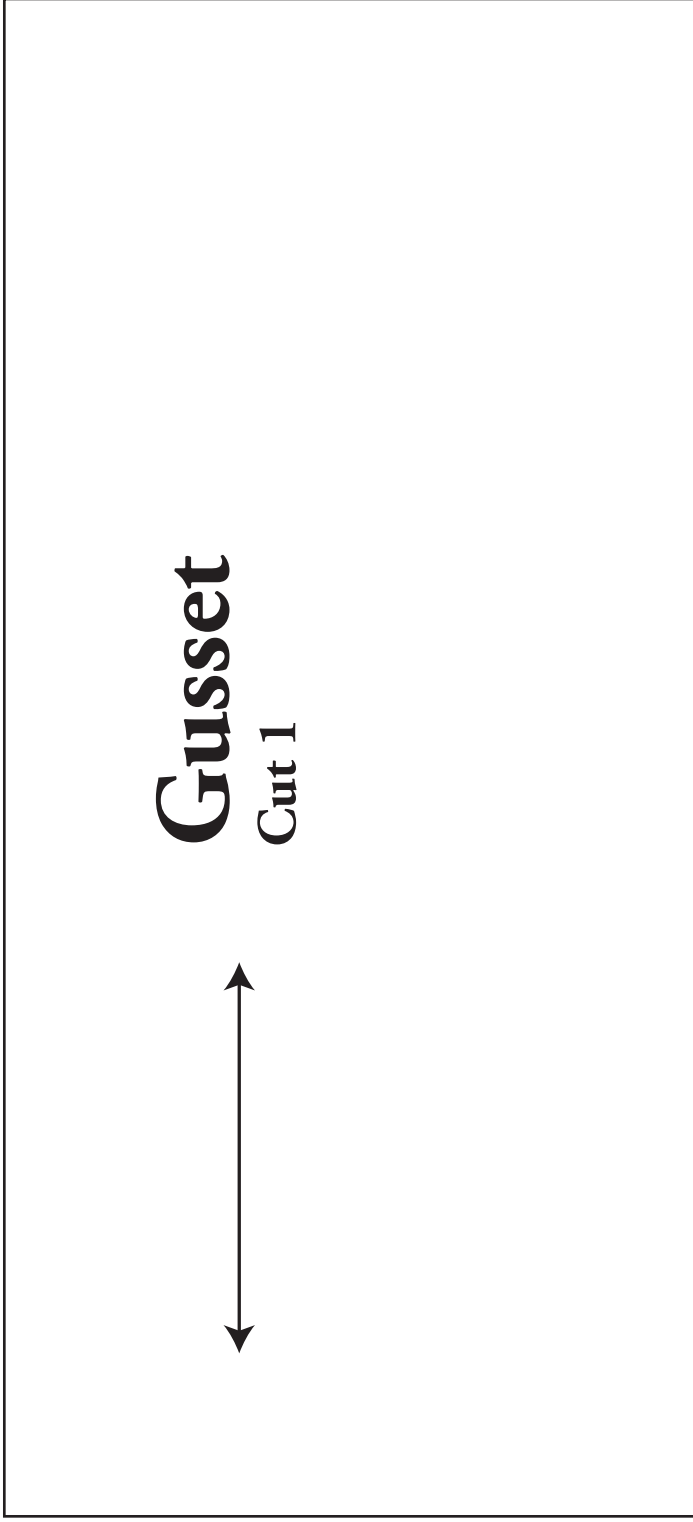
Cut 1

Cut 1 lining

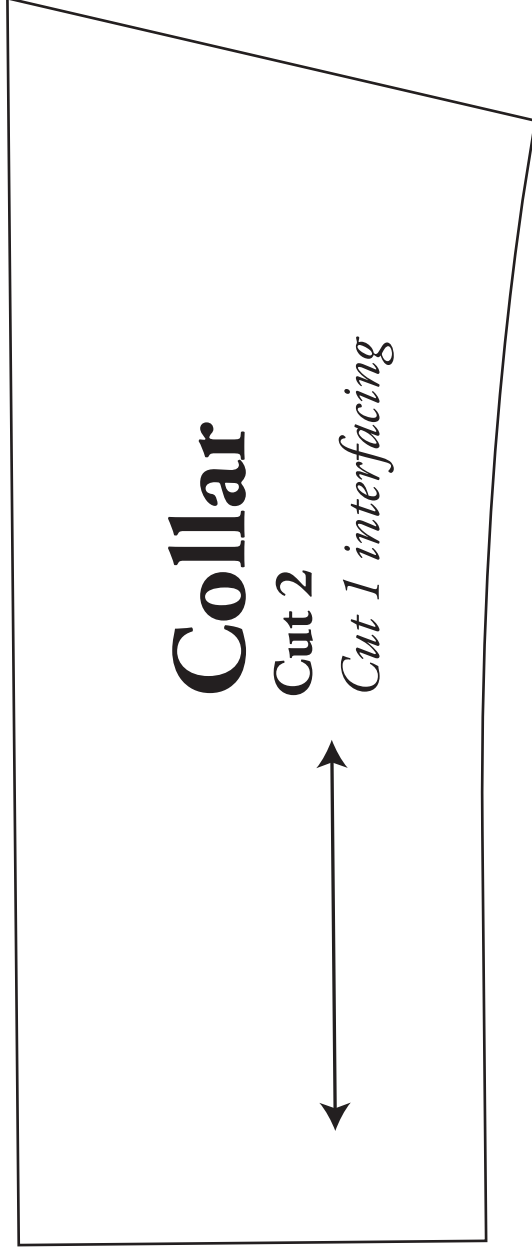
Cut 1 interfacing (or batting)



Place on fold of fabric



Place on fold of fabric



(Place arrow along straight grain of fabric.)